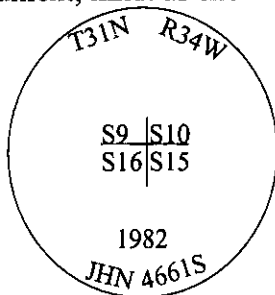


# CERTIFIED CORNER RECORDATION

Corner Sec. Cor. Secs. 9,10,15,16 T. 31N R. 34W P.M., MT Lincoln County

- I. 1903 G.L.O. Original Record by Allen B. Benedict: Set a limestone, 16x10x8 ins., 11 ins. in the ground, for cor. of secs. 9,10,15 and 16, mkd. with 4 notches on S. and 3 notches E. edges. Established four bearing trees.

1982 Certified Corner Recordation by Jack H. Ninneman, 4661S: Found original stone, mkd. as described in the surveyor general and witnessed by two of the original bearing trees. Set a 3 ins. diam. x 30 ins. long aluminum capped monument, mkd. as shown.



Established two new bearing trees and applied a location poster on an 8 in. diam. fir, bearing N03°W, 8.3 ft. dist. of the monument. Painted monument and accessories with red paint. Buried the original stone alongside.

- II. Found a 3 in. diam. x 30 ins. long aluminum capped monument, mkd. as shown and witnessed by two original and two 1982 bearing trees.

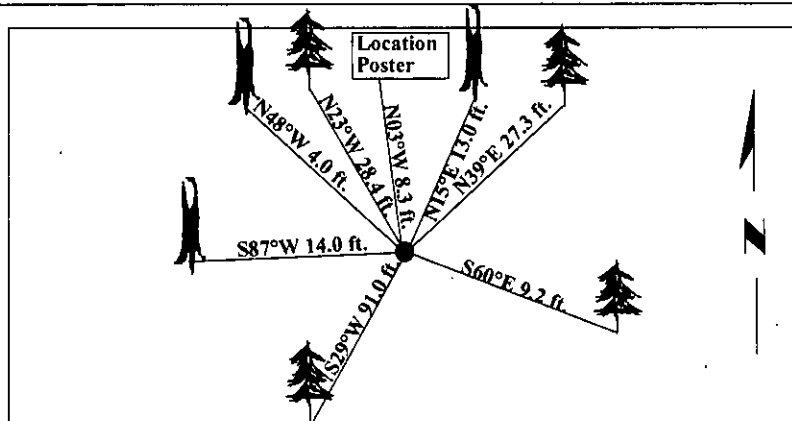
from which:

- A dead fir, 8 ins. diam., bears N15°E, 13.0 ft. dist., mkd. "T31N R34W S10 BT". (1982)
- A fir, 8 ins. diam., bears S60°E, 9.2 ft. dist., mkd. "T31N R34W S15 BT". (1982)
- A dead fir, 10 ins. diam., bears S87°W, 14.0 ft. dist., mkd. "T31N R34W S16 BT". (GLO-Record-Hemlock, S54°30'W, 20lks, 13.20 ft.)
- A dead larch, 6 ins. diam., bears N48°W, 4.0 ft. dist., mkd. "T31N R34W S9 BT". (GLO)
- A fir, 8 ins. diam., bears N03°W, 8.3 ft. dist. with a location poster attached.

- III. Established three new bearing trees:
- A fir, 10 ins. diam., bears N39°E, 27.3 ft. dist., mkd. "T31N R34W S10 BT".
  - A fir, 26 ins. diam., bears S29°W, 91.0 ft. dist., mkd. "T31N R34W S16 BT".
  - A pine, 10 ins. diam., bears N23°W, 28.4 ft. dist., mkd. "T31N R34W S9 BT".

Painted red bands around the bearing tree and attached Land Survey Monument and Bearing Tree signs.

Magnetic Declination: 20° East.



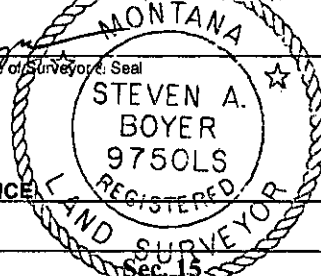
SKETCH OF CORNER

## CERTIFICATION

I, Joe McElmurry  
certify the information shown herein is true and correct.

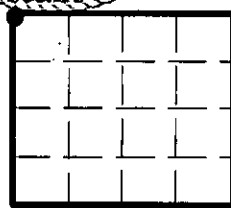
I, Steven A. Boyer  
certify that this Corner Record correctly represents work performed by me or under my direction in compliance with the "Corner Recordation Act" (70-22-701, et seq., M.C.A.)

Steven A. Boyer  
Signature of Surveyor: Seal  
Date: 8/03/98  
Reg. No.: 9750LS  
Employer: U.S. FOREST SERVICE



Office of Clerk and Recorder, County of Lincoln. This "corner record" was filed for record on Mar 3, 1999 was noted on the cross-index plat and is assigned page No. 10295 in book No. \_\_\_\_\_

Coral M. Cumming By OLB  
County Official



• - corner this sheet