

CERTIFIED CORNER RECORDATION

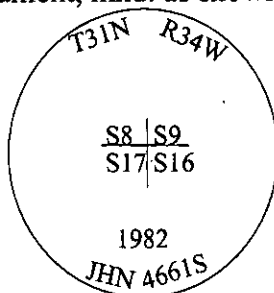
Corner **Sec. Cor.** **Secs.** **8,9,16,17** **T.** **31N** **R.** **34W** **P.M., MT** **Lincoln** **County**

I. 1903 G.L.O. Original Record by Allen B. Benedict: Set a limestone, 24x12x7 ins., 18 ins. in the ground, for cor. of secs. 8,9,16 and 17, mkd. with 4 notches on S. and the E. edges.

Established four bearing trees:

- A fir, 18 ins. diam., bears N62°30'E, 27 lks. dist., mkd. "T31N R34W S9 BT".
- A pine, 30 ins. diam., bears S32°E, 34 lks. dist., mkd. "T31N R34W S16 BT".
- A tamarack, 14 ins. diam., bears S15°W, 50 lks. dist., mkd. "T31N R34W S17 BT".
- A pine, 24 ins. diam., bears N65°30'W, 37 lks. dist., mkd. "T31N R34W S8 BT".

1982 Certified Corner Recordation by Jack H. Ninneman, 4661S: Found original stone and the remains of the original bearing trees, mkd. and witnessed as described in the surveyor general. Set a 3 in. diam. x 30 ins. long aluminum capped monument, mkd. as shown.



Established four new bearing trees and painted monument and accessories with red paint. Attached a location poster on a 10 in. diam. pine tree, bearing S54°E, 3.4 ft. distance of the monument.

II. Found a 3 in. diam. x 30 ins. long aluminum capped monument, mkd. as shown and witnessed by the 1982 bearing trees, no evidence of the original bearing trees.

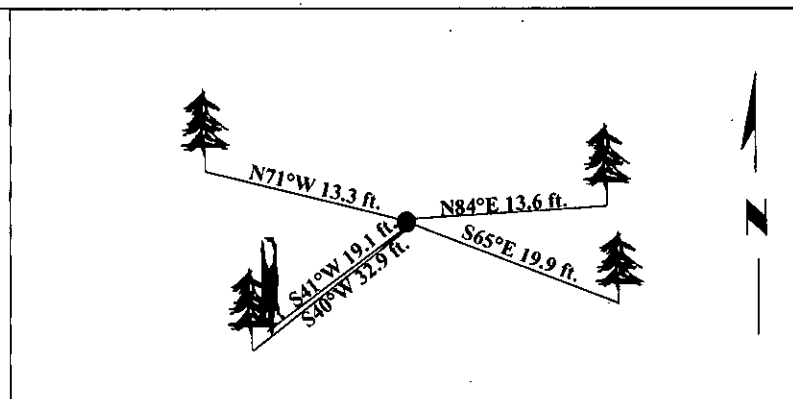
from which:

- A pine, 12 ins. diam., bears N84°E, 13.6 ft. dist., mkd. "S9 BT".
- A larch, 18 ins. diam., bears S65°E, 19.9 ft. dist., mkd. "S16 BT".
- A dead pine, 16 ins. diam., bears S41°W, 19.1 ft. dist., mkd. "S17 BT".
- A hemlock, 8 ins. diam., bears N71°W, 13.3 ft. dist., mkd. "S8 BT".

III. Established one new bearing tree:
A larch, 15 ins. diam., bears S40°W, 32.9 ft. dist., mkd. "T31N R34W S17 BT".

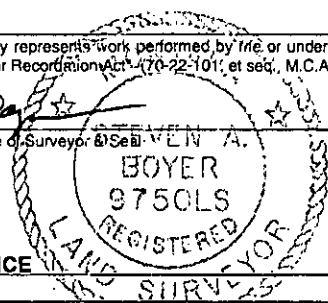
Painted red bands around the bearing tree and attached Land Survey Monument and Bearing Tree signs.

Magnetic Declination: 20° East.



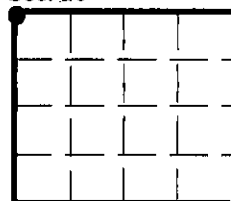
SKETCH OF CORNER

CERTIFICATION
I. <u>Joe McElmurry</u> certify the information shown herein is true and correct.
I. <u>Steven A. Boyer</u> certify that this Corner Record correctly represents work performed by me or under my direction in compliance with the "Corner Recordation Act" (70-22-101, et seq., M.C.A.)
<i>Steven A. Boyer</i> Signature of Surveyor & Seal
Date: <u>8/03/98</u>
Reg. No.: <u>9750LS</u>
Employer: <u>U.S. FOREST SERVICE</u>



Office of Clerk and Recorder, County of Lincoln. This "corner record" was filed for record on March 3, 1999 was noted on the cross-index plat and is assigned page No. **10291** in book No. _____

Carol M. Cummings
County Official



● - corner this sheet