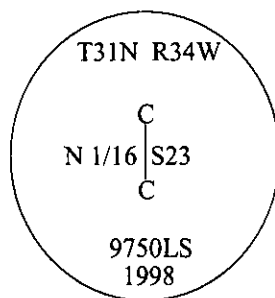


CERTIFIED CORNER RECORDATION

Corner CN 1/16 Sec. 23 T. 31N R. 34W P.M., MT Lincoln County

- I. No previous history.
- II. No evidence found.
- III. Set by survey, a 3/4 in. diam. aluminum driveable rod, 30 ins. long, 22 ins. in the ground, with a 3 1/4 in. diam. aluminum cap, mkd. as shown.

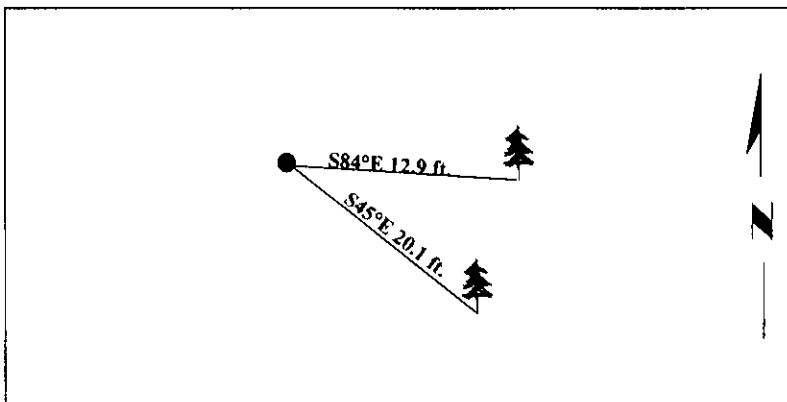


Established two bearing trees:

- A pine, 6 ins. diam., bears S45°E, 20.1 ft. dist., mkd. "X" on a snow blaze "BT".
- A pine, 8 ins. diam., bears S84°E, 12.9 ft. dist., mkd. "CN 1/16 S23 BT".

Painted bearing trees and attached Land Survey Monument and Bearing Tree signs.

Magnetic Declination: 20° East



SKETCH OF CORNER

CERTIFICATION	
I. Rex O. Rice	certify the information shown herein is true and correct.
<i>Rex O. Rice</i>	
I. Steven A. Boyer	certify that this Corner Record correctly represents work performed by me or under my direction in compliance with the "Corner Recordation Act" (70-22-101, 92 sec., M.C.A.)
<i>Steven A. Boyer</i>	
Date: 7/21/98	Signature of Surveyor & Seal
Reg. No.: 9750LS	
Employer: U.S. FOREST SERVICE	

Office of Clerk and Recorder, County of Lincoln. This "corner record" was filed for record on 8-19-98 and was noted on the cross-index plat and is assigned page No. 10202 in book No. _____

Carol M. Cummins
County Official

