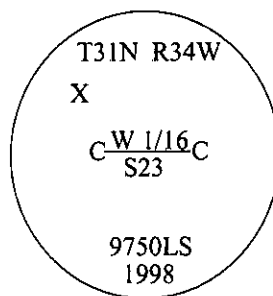


CERTIFIED CORNER RECORDATION

Corner CW 1/16 Sec. 23 T. 31N R. 34W P.M., MT Lincoln County

- I. No previous history.
- II. No evidence found.
- III. Set by survey, a 3/4 in. diam. aluminum driveable rod, 30 ins. long, flush with the ground, with a 3 1/4 in. diam. aluminum cap, mkd. as shown.



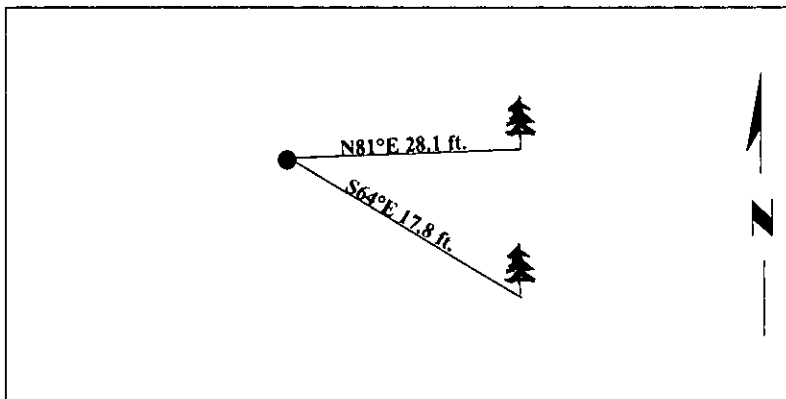
Established two bearing trees:

A fir, 23 ins. diam., bears N81°E, 28.1 ft. dist., mkd. "CW 1/16 S23 BT".

A fir, 24 ins. diam., bears S64°E, 17.8 ft. dist., mkd. "X" on a snow blaze "BT".

Painted bearing trees and attached Land Survey Monument and Bearing Tree signs.

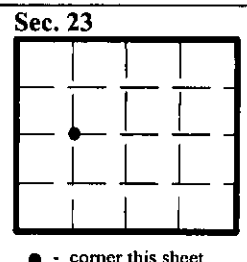
Magnetic Declination: 20° East



SKETCH OF CORNER

CERTIFICATION	
I. <u>Mark Federman</u>	certify the information shown herein is true and correct.
I. <u>Steven A. Boyer</u>	certify that this Corner Record correctly represents work performed by me or under my direction in compliance with the "Corner Recordation Act" (70-22-101, et seq., M.C.A.)
Date: <u>7/21/98</u>	Signature of Surveyor & Seal
Reg. No.: <u>9750LS</u>	
Employer: <u>U.S. FOREST SERVICE</u>	

Office of Clerk and Recorder, County of Lincoln. This "corner record" was filed for record on 8-19-98 and was noted on the cross-index plat and is assigned page No. 10181 in book No. .
Coral M. Cummins RLB
 County Official



• - corner this sheet