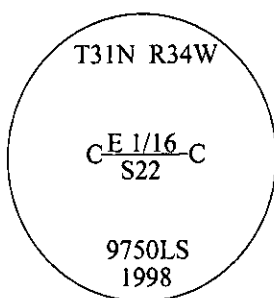


# CERTIFIED CORNER RECORDATION

Corner CE 1/16 Sec. 22 T. 31N R. 34W P.M., MT Lincoln County

- I. No previous history.
- II. No evidence found.
- III. Set by survey, a 3/4 in. diam. aluminum driveable rod, 30 ins. long, flush with the ground, with a 3 1/4 in. diam. aluminum cap, mkd. as shown.

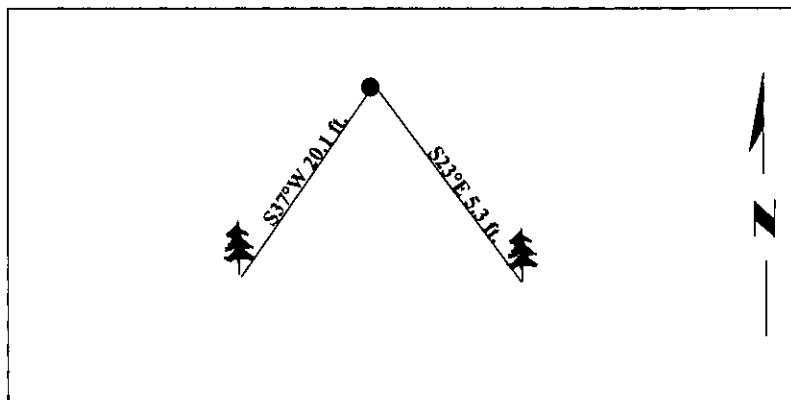


Established two bearing trees:

- A larch, 14 ins. diam., bears S23°E, 5.3 ft. dist., mkd. "CE 1/16 S23 BT".
- A fir, 8 ins. diam., bears S37°W, 20.1 ft. dist., mkd. "X" on a snow blaze "BT".

Painted bearing trees and attached Land Survey Monument and Bearing Tree signs.

Magnetic Declination: 20° East



**SKETCH OF CORNER**

CERTIFICATION

I. Mark Federman  
certify the information shown herein is true and correct.  
*Mark Federman*

II. Steven A. Boyer  
certify that this Corner Record correctly represents work performed by me or under my direction in compliance with the "Corner Recordation Act" (70-24-101 et seq., M.C.A.)  
*Steven A. Boyer*  
Signature of Surveyor & Seal

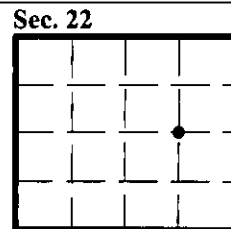
Date: 7/21/98

Reg. No.: 9750LS

Employer: U.S. FOREST SERVICE

Office of Clerk and Recorder, County of Lincoln. This "corner record" was filed for record on 8-19-98 and was noted on the cross-index plat and is assigned page No. 10180 in book No. \_\_\_\_\_.

*Carol M. Cummins By PB*  
 County Official



● - corner this sheet