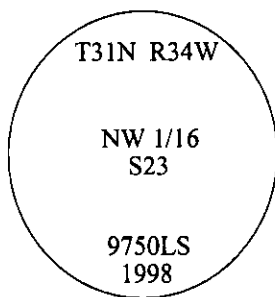


# CERTIFIED CORNER RECORDATION

Corner NW 1/16 Sec. 23 T. 31N R. 34W P.M., MT Lincoln County

- I. No previous history.
- II. No evidence found.
- III. Set by survey, a 3/4 in. diam. aluminum driveable rod, 30 ins. long, flush with the ground, with a 3 1/4 in. diam. aluminum cap, mkd. as shown.

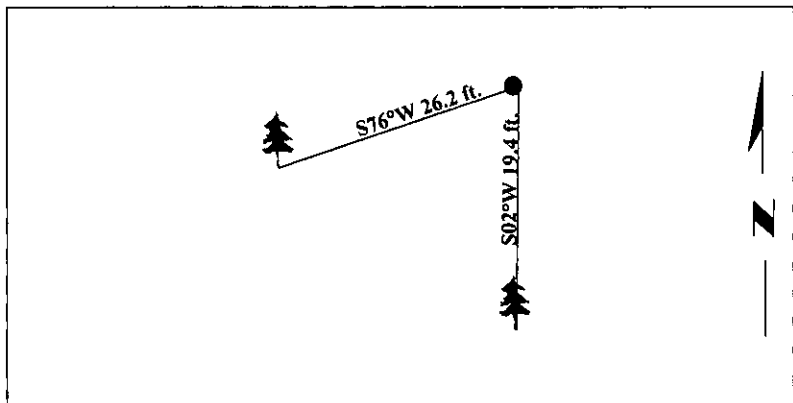


Established two bearing trees:

- A fir, 8 ins. diam., bears S02°W, 19.4 ft. dist., mkd. "NW 1/16 S23 BT".
- A fir, 7 ins. diam., bears S76°W, 26.2 ft. dist., mkd. "X" on a snow blaze "BT".

Painted bearing trees and attached Land Survey Monument and Bearing Tree signs.

Magnetic Declination: 20° East



**SKETCH OF CORNER**

CERTIFICATION

I. Mark Federman  
certify the information shown herein is true and correct.

*Mark Federman*

---

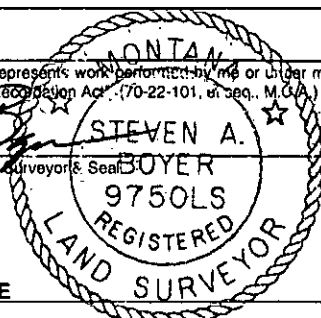
I. Steven A. Boyer  
certify that this Corner Record correctly represents work performed by me or under my direction in compliance with the "Corner Recordation Act", 70-22-101, et seq., M.C.A.

*Steven A. Boyer*  
Signature of Surveyor Seal

Date: 7/21/98

Reg. No.: 9750LS

Employer: U.S. FOREST SERVICE



Office of Clerk and Recorder, County of Lincoln. This "corner record" was filed for record on 8-19-98 and was noted on the cross-index plat and is assigned page No. 10179 in book No. \_\_\_\_\_.

*Carol M. Cummings By DB*  
County Official

