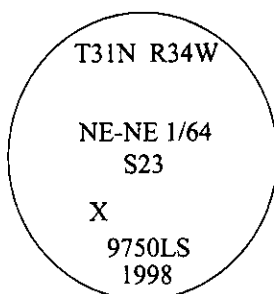


# CERTIFIED CORNER RECORDATION

Corner NE-NE 1/64 Sec. 23 T. 31N R. 34W P.M., MT Lincoln County

- I. No previous history.
- II. No evidence found.
- III. Set by survey, a 3/4 in. diam. aluminum driveable rod, 30 ins long, flush with the ground, with a 3 1/4 in. diam. aluminum cap, mkd. as shown.



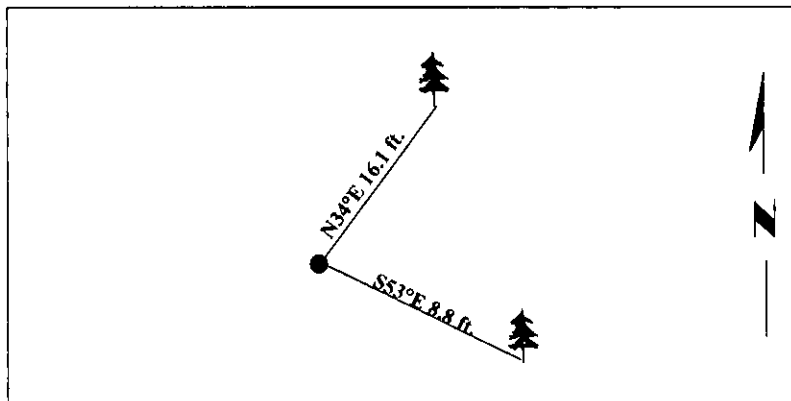
Established two bearing trees:

A fir, 13 ins. diam., bears S53°E, 8.8 ft. dist., mkd. "NE NE 1/64 S23 BT".

A fir, 16 ins. diam., bears N34°E, 16.1 ft. dist., mkd. "X" on a snow blaze "BT".

Painted bearing trees and attached Land Survey Monument and Bearing Tree signs.

Magnetic Declination: 20° East



SKETCH OF CORNER

CERTIFICATION

I, **Mark Federman**  
certify the information shown herein is true and correct.

*Mark Federman*

I, **Steven A. Boyer**  
certify that this Corner Record correctly represents work performed by me or under my direction in compliance with the "Corner Recordation Act" (70-22-101, et seq., M.C.A.)

*Steven A. Boyer*  
Signature of Surveyor & Seal

Date: 7/22/98

Reg. No.: 9750LS

Employer: U.S. FOREST SERVICE

MONTANA  
STEVEN A. BOYER  
9750LS  
REGISTERED  
LAND SURVEYOR

Office of Clerk and Recorder, County of Lincoln. This "corner record" was filed for record on 8-19-98 and was noted on the cross-index plat and is assigned page No. 10178 in book No. \_\_\_\_\_.

*Carol M. Cummings By DB*  
County Official

Sec. 23


• - corner this sheet