

CERTIFIED CORNER RECORDATION

Corner 1/4 Secs. 22&23 T. 31N R. 34W P.M., MT Lincoln County

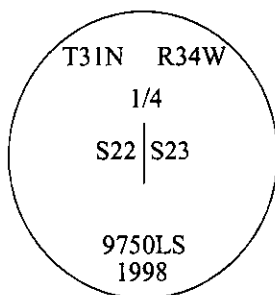
- I. 1903 G.L.O. Original Record by Allen B. Benedict: Set a limestone, 12x10x6 ins., 8 ins. in the ground, for 1/4 sec. cor. mkd. "1/4" on W. face.

Established two bearing trees:

A fir, 20 ins. diam., bears S82°E, 30 lks. dist., mkd. "1/4 S22 BT".
A larch, 14 ins. diam., bears N77°30'W, 33 lks. dist., mkd. "1/4 S22 BT".

- II. No evidence found.

- III. Set by survey, a 2 1/2 in. diam. aluminum pipe, 30 ins. long, 24 ins. in the ground, with a 3 1/4 in. diam. aluminum cap, mkd. as shown.

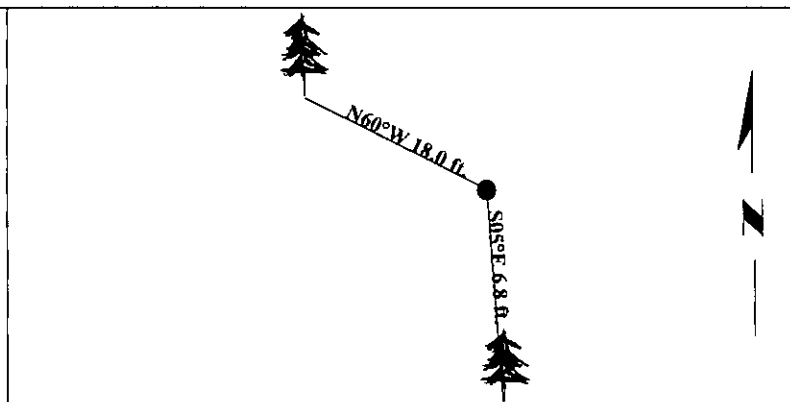


Established two new bearing trees:

A fir, 13 ins. diam., bears S05°E, 6.8 ft. dist., mkd. "1/4 S23 BT".
A fir, 11 ins. diam., bears N60°W, 18.0 ft. dist., mkd. "1/4 S22 BT".

Painted red bands around the bearing tree and attached Land Survey Monument and Bearing Tree signs.

Magnetic Declination: 20° East.



SKETCH OF CORNER

CERTIFICATION

I, Mark Federman
certify the information shown herein is true and correct.

Mark Federman

I, Steven A. Boyer
certify that this Corner Record correctly represents work performed by me or under my direction in compliance with the "Corner Recordation Act" (37-22-101, et seq., M.C.A.).

Steven A. Boyer
Signature of Surveyor & Seal

Date: 8/03/98

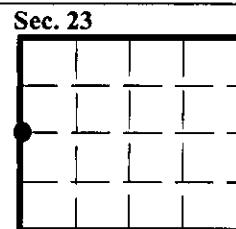
Reg. No.: 9750LS

Employer: U.S. FOREST SERVICE

MONTANA
STEVEN A. BOYER
REGISTERED
LAND SURVEYOR
9750LS

Office of Clerk and Recorder, County of Lincoln. This "corner record" was filed for record on 8-19-98 was noted on the cross-index plat and is assigned page No. 10175 in book No. _____

Coral M. Cumming By PB
County Official



• - corner this sheet