

# CERTIFIED CORNER RECORDATION

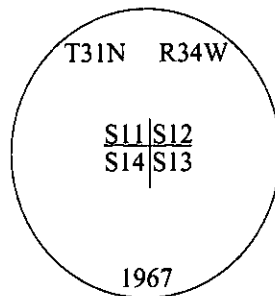
Corner    Sec. Cor.    Secs.    11,12,13,14    T.    31N    R.    34W    P.M., MT    Lincoln    County

- I. 1903 G.L.O. Original Record by Allen B. Benedict: Set a limestone, 16x10x4 ins., 11 ins. in a mound of stone, for cor. of secs. 11,12,13&14, mkd. with 4 notches on S. and 1 notch on E. edges.

Established four bearing trees:

- A pine, 5 ins. diam., bears N25°15'E, 51 lks. dist., mkd. "T31N R34W S12 BT".
- A fir, 5 ins. diam., bears S60°E, 59 lks. dist., mkd. "T31N R34W S13 BT".
- A fir, 6 ins. diam., bears S86°45'W, 100 lks. dist., mkd. "T31N R34W S14 BT".
- A fir, 6 ins. diam., bears N53°30'W, 51 lks. dist., mkd. "T31N R34W S11 BT".

1967 B.L.M. Remonumentation by Woodrow E. Damm et. al.: The cor. of secs. 1,12,13 and 14, monumented with a limestone, 16x10x4 ins., firmly set, mkd. with 4 grooves on the S. and 1 groove on the E. edges and witnessed by the original bearing trees. At the corner point, set an iron post, 30 ins. long, 2 1/2 ins. diam., 24 ins. in the ground, with brass cap mkd. as shown.



Bury the original stone alongside and raise a collar of stone, 3.0 ft. diam., around the iron post.

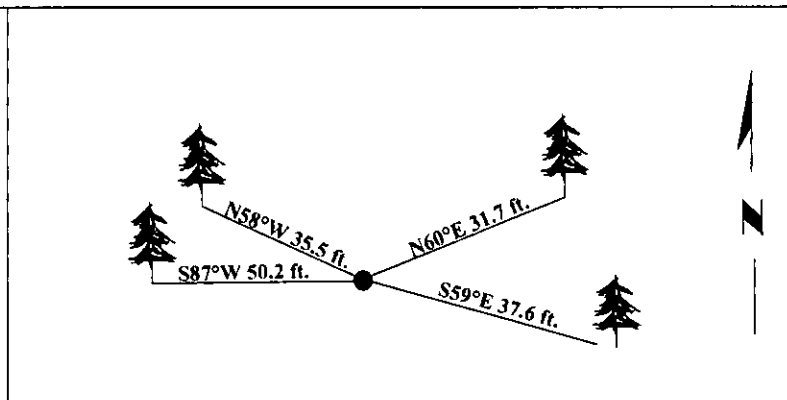
- II. Found a 2 1/2 in. diam. aluminum pipe, firmly set, protruding 6 ins. above the ground, with a 3 1/4 in. diam. aluminum cap, surrounded with a collar of stone, cap mkd. as shown.

from which:

- A fir, 14 ins. diam., bears N60°E, 31.7 ft. dist., with a healed face. (GLO-record)
- A fir, 25 ins. diam., bears S59°E, 37.6 ft. dist., with a healed face. (GLO-record)
- A fir, 25 ins. diam., bears S87°W, 50.2 ft. dist., with a healed face. (GLO-record)
- A fir, 26 ins. diam., bears N58°W, 35.5 ft. dist., with a healed face. (GLO-record)

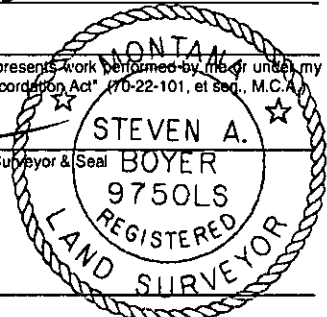
- III. Painted red bands around the bearing tree and attached Land Survey Monument and Bearing Tree signs.

Magnetic Declination: 20° East.



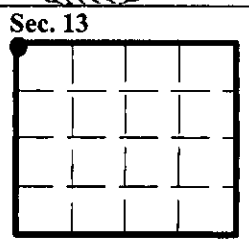
SKETCH OF CORNER

<p>CERTIFICATION</p> <p>I, <u>Mark Federman</u>  <small>certify the information shown herein is true and correct.</small></p> <p><i>Mark Federman</i></p>	
<p>I, <u>Steven A. Boyer</u>  <small>certify that this Corner Record correctly represents work performed by me or under my direction in compliance with the "Corner Recordation Act" 170-22-101, et seq., M.C.A.</small></p> <p><i>Steven A. Boyer</i></p>	
<p>Signature of Surveyor &amp; Seal</p>	
<p>Date: <u>8/03/98</u></p>	
<p>Reg. No.: <u>9750LS</u></p>	
<p>Employer: <u>U.S. FOREST SERVICE</u></p>	



Office of Clerk and Recorder, County of Lincoln. This "corner record" was filed for record on 8-19-98 was noted on the cross-index plat and is assigned page No. 1017 in book No. \_\_\_\_\_

*Coral M. Cummins*  
 County Official



• - corner this sheet