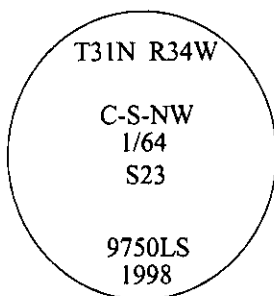


CERTIFIED CORNER RECORDATION

Corner **C-S-NW** Sec. **23** T. **31N** R. **34W** P.M., MT **Lincoln** County
1/64

- I. No previous history.
- II. No evidence found.
- III. Set by survey, a 3/4 in. diam. aluminum driveable rod, 30 ins long, flush with the ground, with a 3 1/4 in. diam. aluminum cap, mkd. as shown.

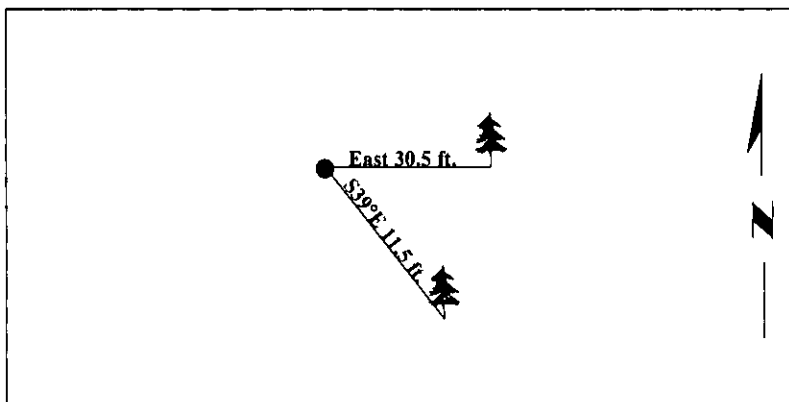


Established two bearing trees:

- A fir, 25 ins. diam., bears S39°E, 11.5 ft. dist., mkd. "C S NW 1/64 S23 BT".
- A fir, 10 ins. diam., bears East, 30.5 ft. dist., mkd. "X" on a snow blaze "BT".

Painted bearing trees and attached Land Survey Monument and Bearing Tree signs.

Magnetic Declination: 20° East



SKETCH OF CORNER

CERTIFICATION

I, **Mark Federman**
certify the information shown herein is true and correct.

Mark Federman

I, **Steven A. Boyer**
certify that this Corner Record correctly represents work performed by me or under my direction in compliance with the "Corner Recordation Act" (MCA 101-101).

Steven A. Boyer

Signature of Surveyor & Seal

MONTANA
 STEVEN A. BOYER
 9750LS
 REGISTERED
 LAND SURVEYOR

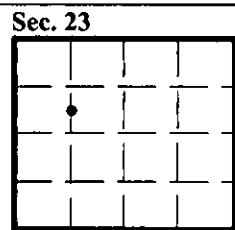
Date: **7/21/98**

Reg. No.: **9750LS**

Employer: **U.S. FOREST SERVICE**

Office of Clerk and Recorder, County of *Lincoln*. This "corner record" was filed for record on *8-19-98* and was noted on the cross-index plat and is assigned page No. **10171** in book No. _____.

Carol M. Cummings
 County Official



• - corner this sheet