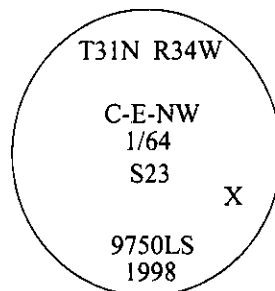


# CERTIFIED CORNER RECORDATION

Corner C-E-NW Sec. 23 T. 31N R. 34W P.M., MT Lincoln County  
1/64

- I. No previous history.
- II. No evidence found.
- III. Set by survey, a 3/4 in. diam. aluminum driveable rod, 30 ins long, 27 ins. in the ground, with a 3 1/4 in. diam. aluminum cap, mkd. as shown.

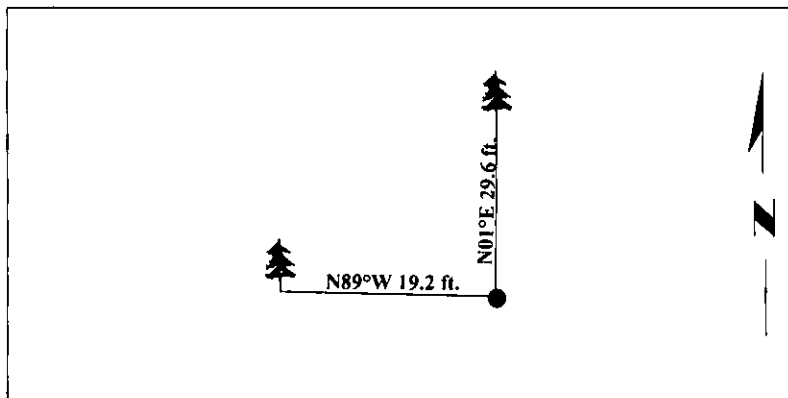


Established two bearing trees:

A pine, 17 ins. diam., bears N01°E, 29.6 ft. dist., mkd. "C E NW 1/64 S23 BT".  
A larch, 17 ins. diam., bears N89°W, 19.2 ft. dist., mkd. "C E NW 1/64 S23 BT".

Painted bearing trees and attached Land Survey Monument and Bearing Tree signs.

Magnetic Declination: 20° East



SKETCH OF CORNER

**CERTIFICATION**

I, Mark Federman  
certify the information shown herein is true and correct.

Mark Federman

I, Steven A. Boyer  
certify that this Corner Record correctly represents work performed by me or under my direction in compliance with the "Corner Recordation Act" (70-22-101, et seq., M.C.A.)

Steven A. Boyer  
Signature of Surveyor & Seal

Date: 7/20/98

Reg. No.: 9750LS

Employer: U.S. FOREST SERVICE

**MONTANA**  
**STEVEN A. BOYER**  
**9750LS**  
**REGISTERED**  
**LAND SURVEYOR**

Office of Clerk and Recorder, County of Lincoln. This "corner record" was filed for record on 8-19-98 and was noted on the cross-index plat and is assigned page No. 10170 in book No. \_\_\_\_\_.

Coral M. Cumming By SB  
County Official

