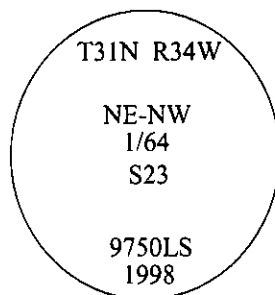


# CERTIFIED CORNER RECORDATION

Corner NE-NW Sec. 23 T. 31N R. 34W P.M., MT Lincoln County  
1/64

- I. No previous history.
- II. No evidence found.
- III. Set by survey, a 3/4 in. diam. aluminum driveable rod, 30 ins long, 28 ins. in the ground, with a 3 1/4 in. diam. aluminum cap, mkd. as shown.

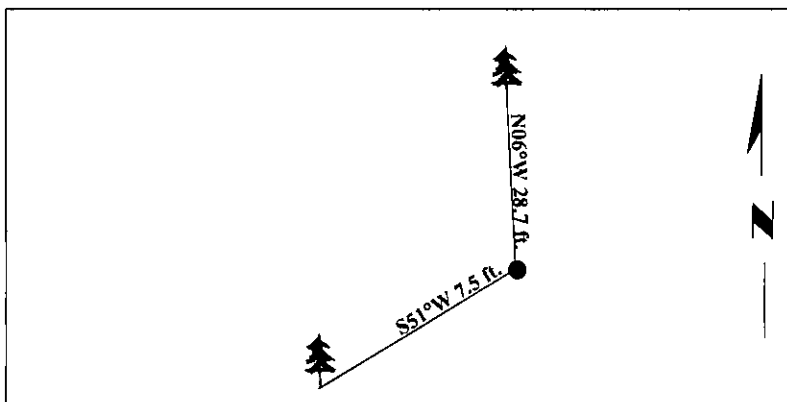


Established two bearing trees:

- A pine, 22 ins. diam., bears S51°W, 7.5 ft. dist., mkd. "NE NW 1/64 S23 BT".
- A pine, 27 ins. diam., bears N06°W, 28.7 ft. dist., mkd. "X" on a snow blaze "BT".

Painted bearing trees and attached Land Survey Monument and Bearing Tree signs.

Magnetic Declination: 20° East

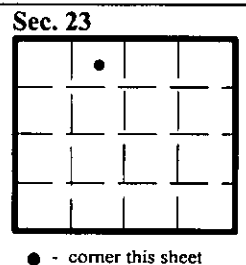


SKETCH OF CORNER

|                                      |  |
|--------------------------------------|--|
| CERTIFICATION                        |  |
| I. <u>Mark Federman</u>              | certify the information shown herein is true and correct.  |
|                                      |  |
| I. <u>Steven A. Boyer</u>            | certify that this Corner Record correctly represents work performed by me or under my direction in compliance with the "Corner Recordation Act" (70-22-101, et seq., M.C.A.) |
|                                      |  |
| Date: <u>7/20/98</u>                 | Signature of Surveyor & Seal   |
| Reg. No.: <u>9750LS</u>              |  |
| Employer: <u>U.S. FOREST SERVICE</u> |  |

Office of Clerk and Recorder, County of Lincoln. This "corner record" was filed for record on 8-19-98 and was noted on the cross-index plat and is assigned page No. 10169 in book No. \_\_\_\_\_.

County Official



• - corner this sheet