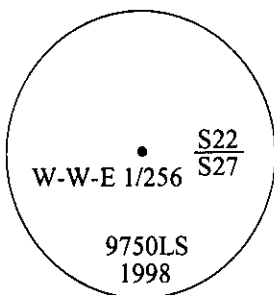


CERTIFIED CORNER RECORDATION

Corner W-W-E Secs. 22&27 T. 31N R. 34W P.M., MT Lincoln County
1/256

- I. No previous history.
- II. No evidence found.
- III. Set by survey, a 3/4 in. diam. aluminum driveable rod, 30 ins. long, 24 ins. in the ground, with a 3 1/4 in. diam. aluminum cap, mkd. as shown, with a (dot) for the exact corner point.

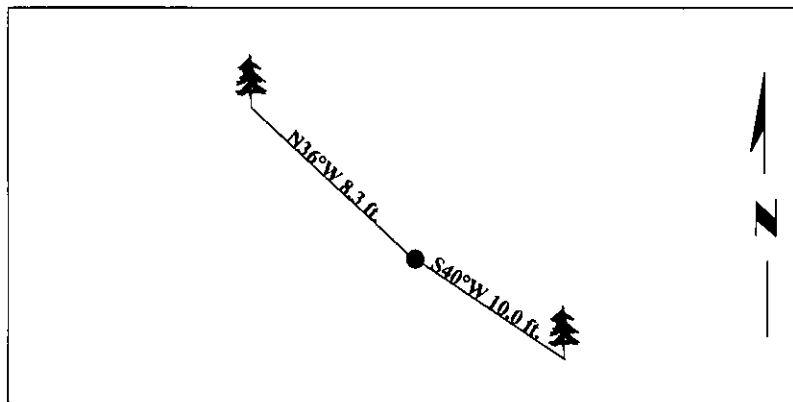


Established two bearing trees:

- A cedar, 5 ins. diam., bears S40°W, 10.0 ft. dist., mkd. "X" on a snowblaze "BT"..
- A cedar, 11 ins. diam., bears N36°W, 8.3 ft. dist., mkd. "W W E 1/256 S22 BT".

Painted bearing trees and attached Land Survey Monument and Bearing Tree signs.

Magnetic Declination: 20° East

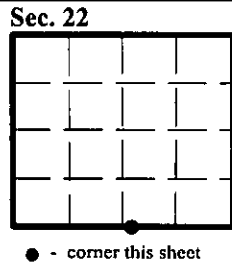


SKETCH OF CORNER

CERTIFICATION	
I. <u>Rex O. Rice</u>	certify the information shown herein is true and correct.
<u>Rex O. Rice</u>	
I. <u>Steven A. Boyer</u>	
certify that this Corner Record correctly represents work performed by me or under my direction in compliance with the "Corner Recordation Act" (70-22-101, et seq., M.C.A.)	
<u>Steven A. Boyer</u>	
Signature of Surveyor & Seal	
Date: <u>7/21/98</u>	
Reg. No.: <u>9750LS</u>	
Employer: <u>U.S. FOREST SERVICE</u>	

Office of Clerk and Recorder, County of Lincoln. This "corner record" was filed for record on 8-19-98 and was noted on the cross-index plat and is assigned page No. 10159 in book No. _____.

Debra J. Blythe Deputy
County Official
Coral M. Cummins Clerk & Recorder



Cross Index No. R-15.25 T. 31N R. 34W P.M., MT