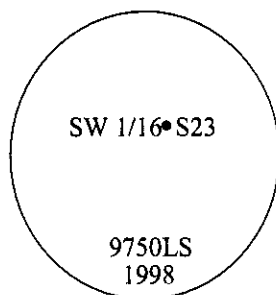


CERTIFIED CORNER RECORDATION

Corner SW 1/16 Sec. 23 T. 31N R. 34W P.M., MT Lincoln County

- I. No previous history.
- II. No evidence found.
- III. Set by survey, a 3/4 in. diam. aluminum driveable rod, 30 ins. long, 28 ins. in the ground, with a 3 1/4 in. diam. aluminum cap, mkd. as shown, with a (dot) for the exact corner point.

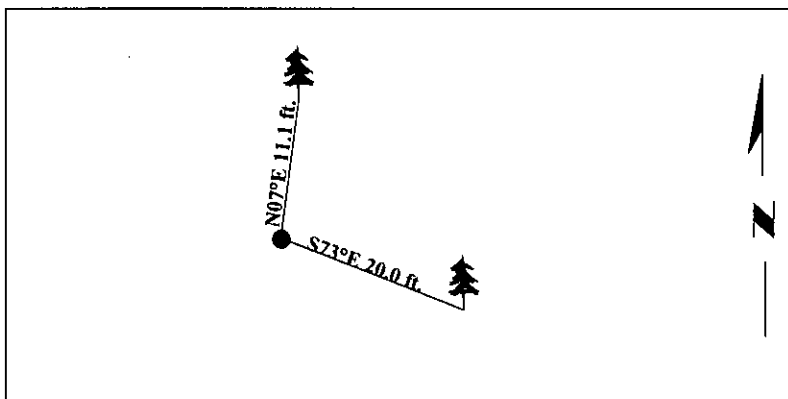


Established two bearing trees:

A larch, 15 ins. diam., bears N07°E, 11.1 ft. dist., mkd. "SW 1/16 S23 BT".
A cedar, 13 ins. diam., bears S73°E, 20.0 ft. dist., mkd. "SW 1/16 S23 BT".

Painted bearing trees and attached Land Survey Monument and Bearing Tree signs.

Magnetic Declination: 20° East



SKETCH OF CORNER

CERTIFICATION

I, Rex O. Rice
certify the information shown herein is true and correct.

Rex O. Rice

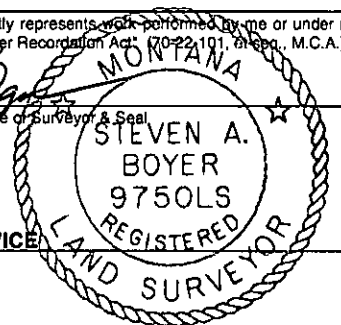
I, Steven A. Boyer
certify that this Corner Record correctly represents work performed by me or under my direction in compliance with the "Corner Recordation Act" (70-22-101, et seq., M.C.A.)

Steven A. Boyer
Signature of Surveyor & Seal

Date: 7/20/98

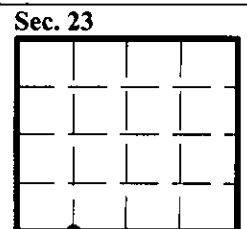
Reg. No.: 9750LS

Employer: U.S. FOREST SERVICE



Office of Clerk and Recorder, County of Lincoln. This "corner record" was filed for record on 8-19-98 and was noted on the cross-index plat and is assigned page No. 10157 in book No. _____.

Carol M. Cummins
County Official



● - corner this sheet