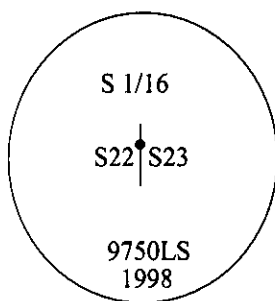


CERTIFIED CORNER RECORDATION

Corner S 1/16 Secs. 22&23 T. 31N R. 34W P.M., MT Lincoln County

- I. No previous history.
- II. No evidence found.
- III. Set by survey, a 3/4 in. diam. aluminum driveable rod, 30 ins. long, 26 ins. in the ground, with a 3 1/4 in. diam. aluminum cap, mkd. as shown, with a (dot) for the exact corner point.

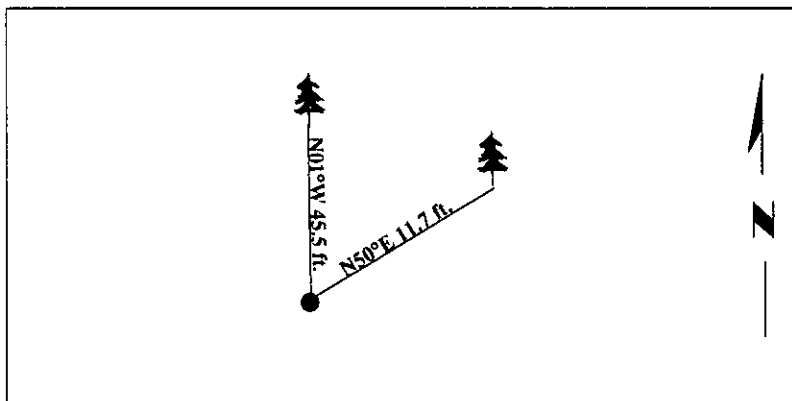


Established two bearing trees:

- A fir, 15 ins. diam., bears N50°E, 11.7 ft. dist., mkd. "S 1/16 S23 BT".
- A fir, 14 ins. diam., bears N01°W, 45.5 ft. dist., mkd. "S 1/16 S22 BT".

Painted bearing trees and attached Land Survey Monument and Bearing Tree signs.

Magnetic Declination: 20° East



SKETCH OF CORNER

CERTIFICATION

I, Rex O. Rice
 certify the information shown herein is true and correct.

Rex O. Rice

I, Steven A. Boyer
 certify that this Corner Record correctly represents work performed by me or under my direction in compliance with the "Corner Recordation Act" (20-22-101, et seq., M.C.A.)

Steven A. Boyer
 Signature of Surveyor & Seal

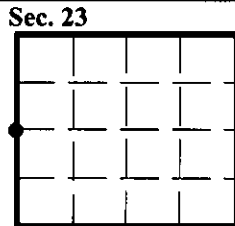
Date: 7/20/98

Reg. No.: 9750LS

Employer: U.S. FOREST SERVICE

Office of Clerk and Recorder, County of Lincoln. This "corner record" was filed for record on 8-19-98 and was noted on the cross-index plat and is assigned page No. 10156 in book No. _____.

Coral M. Cummings By RB
 County Official



● - corner this sheet