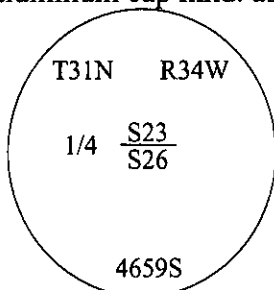


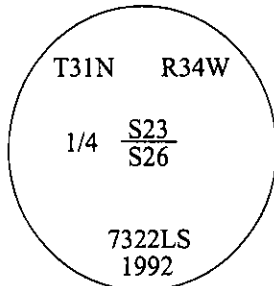
CERTIFIED CORNER RECORDATION

Corner 1/4 **Secs.** 23&26 **T.** 31N **R.** 34W **P.M., MT** **Lincoln** **County**

- I. 1903 G.L.O. Original Record by Allen B. Benedict: Set a sand stone, 15x10x5 ins., 10 ins. in the ground, for 1/4 sec. cor., mkd. "1/4" on the N. face. Established two bearing trees.
1985 Certified Corner Recordation by Carl R. McMillen, 4659S: Found the remains of the original stone, 15x10x5 ins., 10 ins. in the ground, "1/4" visible on the North face. Witnessed by the remains of the original bearing trees. At the corner point, set an aluminum post, 30 ins. long, 2 1/2 ins. diam., 24 ins. in the ground, with a 3 in. diam. aluminum cap mkd. as shown. Established two new bearing trees.



- 1992 USFS Certified Corner Recordation by Alvah F. Hughes, 7322LS: Found a stone, 10x5 ins., protruding 8 ins. above the ground, mkd. "1/4" on the North face (not monumented as indicated on the 1985 recordation), witnessed by the remains of the 1985 and one of the original bearing trees. At the corner position, set a 2 1/2 in. diam. aluminum pipe, 30 ins. long 22 ins. in the ground, with a 3 1/4 in. diam. USFS aluminum cap, mkd. as shown. Established two new bearing trees and a post.

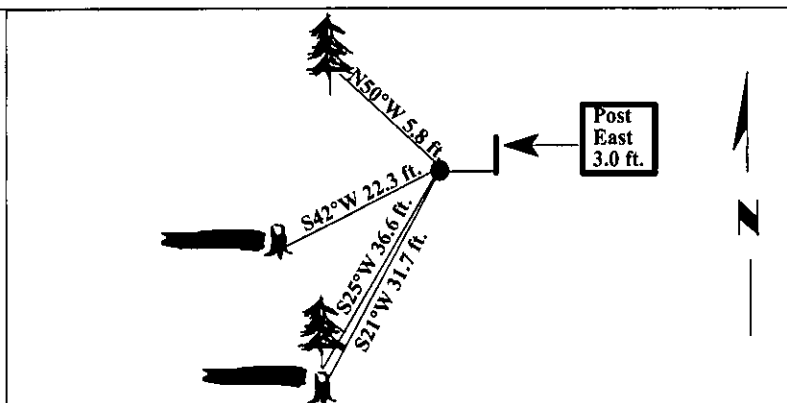


Bury the original stone alongside the new aluminum monument.

- II. Found a 2 1/2 in. diam. aluminum pipe, protruding 8 ins. above the ground, with a 3 1/4 in. diam. USFS aluminum cap, mkd. as shown.
 from which:

- A down fir, 7 ins. diam., bears S21°W, 31.7 ft. dist., mkd. "1/4 S26 BT". (1985-record-S16°W)
- A rotten down pine, 22 ins. diam., bears S42°W, 22.3 ft. dist., mkd. "1/4 S24 BT". (GLO-record-S34°W, "1/4 S26 BT").
- A fir, 8 ins. diam., bears N50°W, 5.8 ft. dist., mkd. "1/4 S23 BT". (1985-record-N60°W)
- A galvanized steel post, East, 3.0 ft. dist. with a Land Survey Monument decal attached.

- III. Established one bearing tree:
 A fir, 8 ins. diam., bears S25°W, 36.6 ft. dist., mkd. "1/4 S26 BT".
 Painted red bands around the bearing tree and attached Land Survey Monument and Bearing Tree signs.
 Magnetic Declination: 20° East.



SKETCH OF CORNER

CERTIFICATION

I, Rex O. Rice
 certify the information shown herein is true and correct.

Rex O. Rice

I, Steven A. Boyer
 certify that this Corner Record correctly represents work performed by me or under my direction in compliance with the "Corner Recordation Act" (70-22-01 et seq., M.C.A.)

Steven A. Boyer
 Signature of Surveyor & Seal

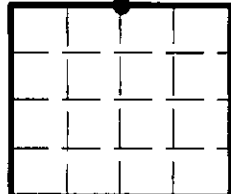
Date: 5/06/98

Reg. No.: 9750LS

Employer: U.S. FOREST SERVICE

Office of Clerk and Recorder, County of Lincoln. This "corner record" was filed for record on 21 July 98 was noted on the cross-index plat and is assigned page No. 10132 in book No. _____

Coral M. Cummings
 County Official



• - corner this sheet