

# CERTIFIED CORNER RECORDATION

Corner Meander Corner S13 & S18 T. 31N R. 34W & 33W P.M.M. Lincoln County

1893 Original GLO record by Daniel P. Mumbrue, Book 2821 Pages 35-36:

"Set a limestone 12x10x6 ins 8 ins. in the ground for Meander Cor. to Frac. Secs. 13 & 18 marked M.C. on S. face; from which

A fir 14 ins. diam bears S 39° E 28 lks. dist. marked T31N. R.33W. S18 M.C.B.T.

A pine 20 ins. diam. bears N9 3/4° W 192 lks. dist. marked T31N. R34W. S.13 M.C.B.T."

1967 BLM Remonumentation of certain corners, Book 9013 Pages 127-128:

"The meander cor. of secs. 13 and 18, on the W. bdy. of the Tp., and on the right bank of the Kootenai River, as determined from the remains of the original bearing trees.

At the corner point

Set an iron post, 30 ins. long, 2 1/2 ins. diam., 24 ins. in the ground, with brass cap mkd. from which

The original bearing trees:

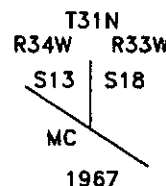
A fir stump, 14 ins. diam., bears S. 39° E., 28 lks. dist., mkd. S18 MC BT. (Record)

A pine stump, 20 ins. diam., bears N. 9 3/4° W., 192 lks. dist., with no visible scribing. (Record)

The new bearing trees:

A fir, 6 ins. diam., bears N. 77 1/2° E., 30 lks. dist., mkd. T31N R33W S18 MC BT.

A pine, 16 ins. diam., bears N. 6 1/2° W., 78 lks. dist., mkd. T31N R34W S13 MC BT."



1997 Rehabilitation by Jane L. Eby, 8694ES:

The position of the corner falls in a washed-out portion of the riverbank.

I found the BLM pipe monument described in the 1967 record disturbed: unsidedown, buried at the bottom of the wash at water's edge, marked as shown.

I found no evidence of the BLM bearing trees as their positions also fall in the washed-out ravine.

I found the remains of the original GLO trees as follows:

A Douglas fir stump, 13 inches diameter, visible scribing "T31N R33W S18", with bearing tree sign attached.

A Pine stump, 19 inches diameter with no visible scribing.

I reset the BLM monument as determined from the remains of the original bearing trees and establish 2 new bearing trees:

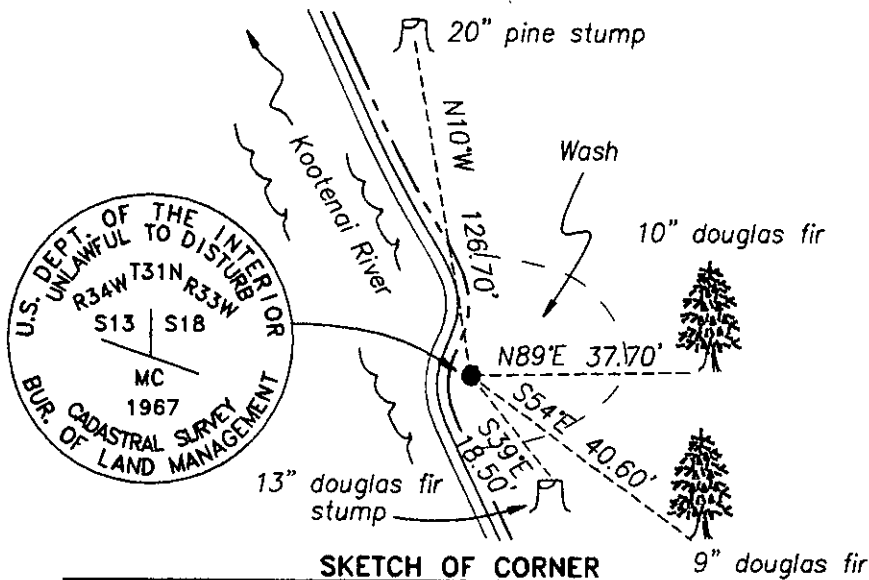
A Douglas fir, 10 inches DBH, bears N. 89° E., 37.7 feet distance, scribed "T31N R33W S18 MC BT".

A Douglas fir, 9 inches DBH, bears S. 54° E., 40.6 feet distance, scribed "X" "BT".

Measurements were made with a steel tape and Silva hand compass using 19° declination.

I painted blazes and faces red. I attached Land Survey Monument signs to the new trees and pine stump.

See Certificate of Survey No. 2573 for ties to adjacent controlling section corners.



CERTIFICATION	
1. <u>Michael J. Drenth</u>	certify the information shown herein to be true and correct.
<u>Michael J. Drenth</u> Signature Ground Party Chief	
1. <u>Jane L. Eby</u>	certify that this Corner Record correctly represents a corner established or performed by me or under my direction in compliance with the "Corner Recordation Act" (70-22, Stat. 104, M.C.K.)
<u>Jane L. Eby</u> Signature of Surveyor & Seal	
Date: <u>6/14/97</u>	Reg. No. <u>8694ES</u> <u>8694ES</u>
Employer: <u>Eby &amp; Associates</u>	

Office of Clerk and Recorder, County of Lincoln. This "corner

record" was filed for record on Aug 12, 1997

was noted on the cross-index plat and is assigned page No. 9903, in

book No. \_\_\_\_\_

Coral M. Cumming By EEB  
County Official  
J/K-1 31N 33W  
Cross Index No. J/K-25 T. 31N R. 34W P.M.M.

Adopted July 1, 1981, Montana Board of Professional Engineers & Land Surveyors

Sec. 18			

• corner this sheet