

CERTIFIED CORNER RECORDATION

Corner WC W1/4 **Sec.** 15 **T.** 31N **R.** 33W **P.M., MT** **Lincoln** **County**

I. 1893 G.L.O. original record by Daniel P. Mumbrue: Set a post 3 ft. long, 3 ins. square, 24 ins. in the ground, for witness corner to 1/4 section corner, mkd. WC 1/4 S on W face;

from which:

- A fir, 18 ins. diam., bears N19 1/2°E, 8 lks. dist., mkd. "WC 1/4 S BT".
- A fir, 22 ins. diam., bears N60°W, 15 lks. dist., mkd. "WC 1/4 S BT".

II. No evidence found of post or original bearing trees.

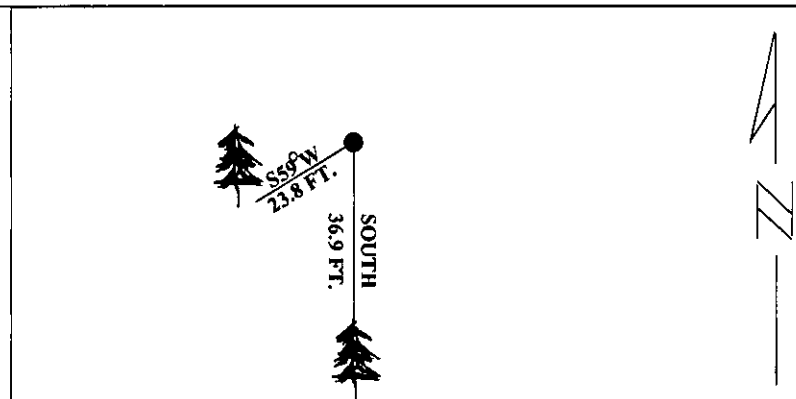
III. At the position determined by survey, set a 2 1/2 in. diam., 30 in. long alum. pipe, 20 ins. into the ground, in a collar of stone, with a 3 1/4 in. diam. alum. cap mkd. as shown.



Established two new bearing trees::

- A fir, 7 ins. diam., bears SOUTH, 36.9 ft. dist., mkd. "X BT".
- A fir, 7 ins. diam., bears S59°W, 23.8 ft. dist., mkd. "X BT".

Painted a red band around bearing trees and attached Land Survey Monument and Bearing Tree signs.
Magnetic Declination: 20° East.



SKETCH OF CORNER

| |
|--|
| CERTIFICATION |
| I, Thomas M. Hommel certify the information shown herein is true and correct. Signature Ground Party Chief |
| I, Alvah F. Hughes certify that this Corner Record correctly represents work performed by me or under my direction in compliance with the "Corner Recordation Act" (70-22-101, et seq. M.C.A.) Signature of Surveyor & Seal |
| Date: 12/12/95 |
| Reg. No.: 7322LS |
| Employer: U.S. FOREST SERVICE |

Office of Clerk and Recorder, County of LINCOLN. This "corner record" was filed for record on JULY 29, 1997 was noted on the cross-index plat and is assigned page No. 9769 in book No. _____

CORAL M. CUMMINGS *By ALB*
County Official

