

# CERTIFIED LAND CORNER RECORDATION

SECTION 28 TWP. 31 N., R. 33 W., M.P.M.

DESCRIPTION OF CORNER EVIDENCE FOUND, AND ORIGINAL RECORD (IF KNOWN)

This survey reports additional corners set in above  
Section - Recordation Form previously filed

DESCRIPTION OF MONUMENT AND ACCESSORIES ESTABLISHED  
TO PERPETUATE THE ORIGINAL LOCATION OF THIS CORNER:

Final Date of work Date of work: Aug. 1980

SEE DIAGRAM ON REVERSE SIDE

SKETCH, WITH COURSE AND DISTANCE TO ADJACENT CORNERS IF DETERMINED IN THIS SURVEY.  
(MAY SKETCH OR PASTE REPRODUCTION ON REVERSE SIDE.)

SEE DIAGRAM ON REVERSESIDE - adds additional corners

Surveyor's Seal

I, DAVID B. STANLEY  
certify that the information shown herein is true and  
correct.

David B. Stanley  
Signature of Ground Party Chief

J. H. Ninneman

I,  
certify that I have carefully performed or reviewed the  
work done on the diagrammed corner as reported on this  
recordation form and approve the same.

J. H. Ninneman  
Signature of Surveyor

DIAGRAM OF CORNER:

N.	Sec. 28 T. 31 N. R. 33 W.
Numerous Corners set See diagram on other side	

= Corner recorded on the sheet

4661 S.

Registration Number

Office of Clerk and Recorder, County of Lincoln

This "corner record" was filed for record on the 2nd day of December, 1980, was noted on the cross-index plat and is

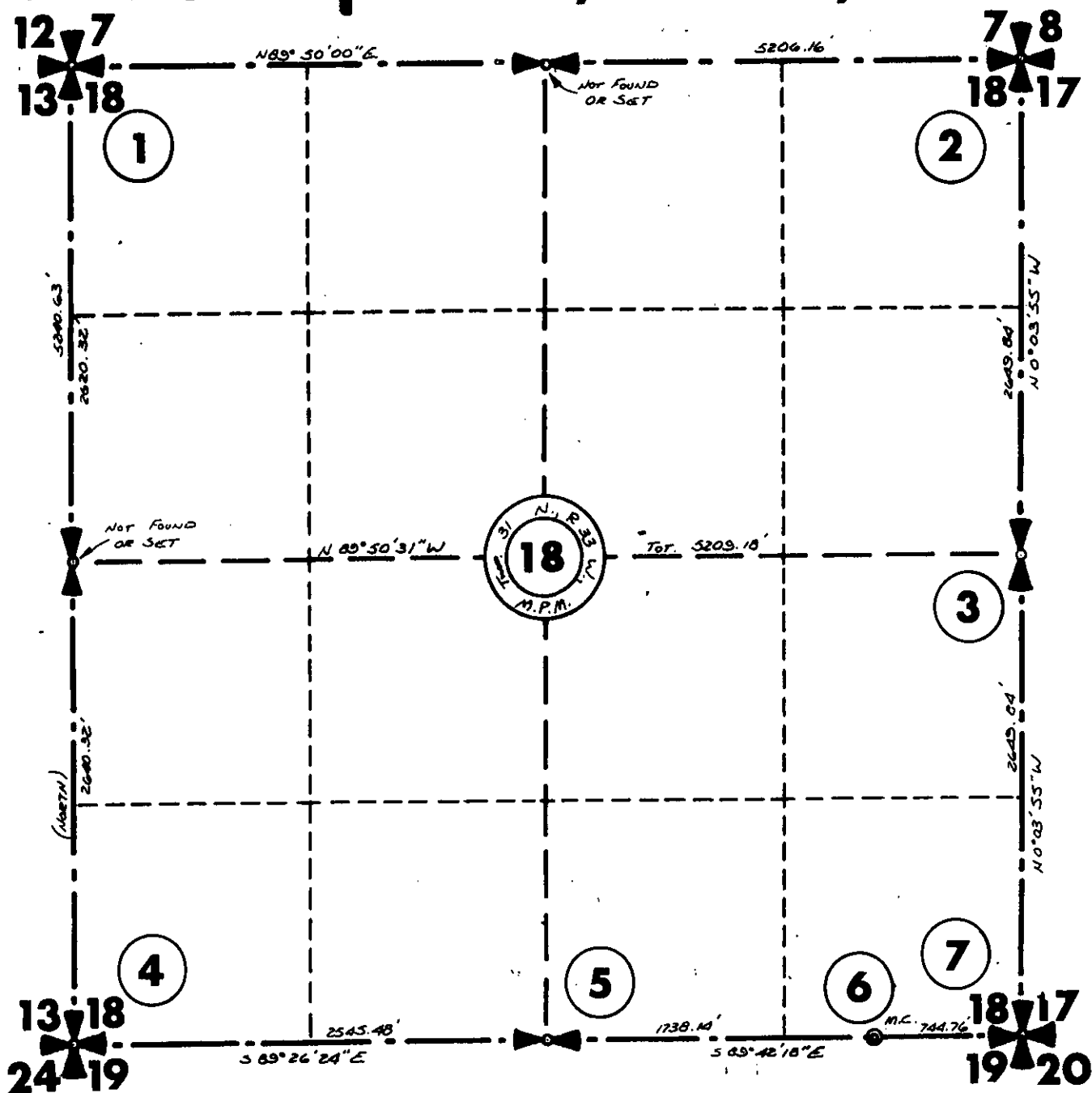
assigned page No. 936, in book No. 1

Eleanor L. Taugher, by Deputy Clerk  
County Official

Cross Index No. 9-U 12-T 10-R  
10-V 10-T 9-S  
10-U 11-T 10-S

# Sec.18 Twp.31 N.,R.33 W.,M.P.M.

(84)



- (1) Found B.L.M. B.C.
- (2) Found B.L.M. B.C.
- (3) Set 5/8"x 24" Capped Steel Pin  
Cap Stamped J.H.N. 4661 S. from  
which a 12" Cedar Bears S64°46'E 22.5 Ft.
- (4) Found B.L.M. B.C.
- (5) Found B.L.M. B.C.
- (6) Found B.L.M. B.C. M.C.
- (7) Found B.L.M. B.C.  
4 B.T.s

