

CERTIFIED CORNER RECORDATION

Corner Cor. 7 H.E.S. 935 Sec. 13 T. 31N R. 32W P.M., MT. Lincoln County

- I. 1919 original H.E.S. notes by W.P. Stephenson: Cor. No. 7 of this survey, coincident in point for list Cor. No. 4, set a small stone mkd. with a cross (X) under a limestone, 26 x 12 x 7 ins., 15 ins. in the ground, mkd. 7-HES 935 on SW. face. and a cross (X) on top for exact cor. point, from which:

A cross (X) on a pine tree, 9 ins. diam., bears S48°07'E, 92 lks. dist., (60.7 ft.) mkd. 7 HES 935 BT.  
A cross (X) on a pine tree, 9 ins. diam., bears N10°23'W, 48 lks. dist., (31.6 ft.) mkd. 7 HES 935 BT.

- II. Found a stone, 11x7 ins., 10 ins. out of the ground, firmly set, mkd. 7 HES 935 on SW. face, from which:

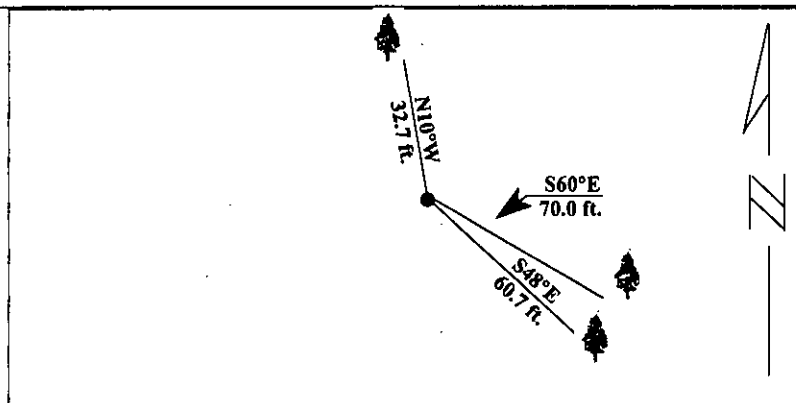
A pine, 12 ins. diam., bears N10°W, 32.7 ft dist., mkd. 7 HES 935 BT.  
A pine, 16 ins. diam., bears S48°E, 60.7 ft. dist., visible scribe.

- III. Establish one new bearing tree.

A fir, bears S60°E, 70.0 ft. dist., mkd. 7 HES 935 BT. (no diam., for tree).

Painted red bands around the bearing trees and attached Land Survey Monument and Bearing Tree signs.

Magnetic Declination: 20° East

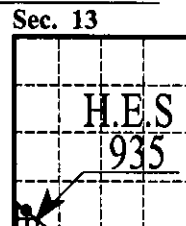


SKETCH OF CORNER

|   |   |
|---|---|
| CERTIFICATION   |   |
| I. <u>Rex O. Rice</u>   | certify the information shown herein is true and correct. |
| <u>Rex O. Rice</u>  | Signature Ground Party Chief                              |
| I. <u>Alvah F. Hughes</u>   |   |
| certify that this Corner Record correctly represents work performed by me, or under my direction in compliance with the "Corner Recordation Act" (70-22-101, et seq., M.C.A.) |   |
| <u>Alvah F. Hughes</u>  | Signature of Surveyor & Seal                              |
| Date: <u>1/30/96</u>  |   |
| Reg. No.: <u>7322LS</u>   |   |
| Employer: <u>U.S. FOREST SERVICE</u>  |   |

Office of Clerk and Recorder, County of LINCOLN. This "corner record" was filed for record on FEB 20, 1997 was noted on the cross-index plat and is assigned page No. 9236, in book No. CORAL M. CUMMINGS By DLB

County Official



• - corner this sheet