

CERTIFIED CORNER RECORDATION

Corner Cor. 6 H.E.S. 935 Sec. 13 T. 31N R. 32W P.M., MT. Lincoln County

I. 1919 original H.E.S. notes by W.P. Stephenson: Cor. No. 6 and closing corner of this survey on line between sec. 13 and 14 establish as follows. Set a small stone mkd. with a cross (X) under a limestone, 26 x 14 x 4 ins., 16 ins. in the ground, mkd. 6-HES 935 on SW. face, C.C. on the NW. face, and a cross (X) on top for exact cor. point, raise a mound of stone, 4 ft. base 2 ft. high, on this course 3 1/2 ft. dist., from which:

A cross (X) on a fir tree, 6 ins. diam., bears N14°52'E, 35 lks. dist., (23.1 ft.) mkd. 6 HES 935 BT.
 A cross (X) on a fir tree, 4 ins. diam., bears N24°30'W, 27 lks. dist., (17.8 ft.) mkd. 6 HES 935 BT.

II. Found a stone, 5x12 ins., 8 ins. out of the ground, firmly set, mkd. 6 HES 935 on SW. face, and CC on NW. face appears to be fractured off, X on top, from which:

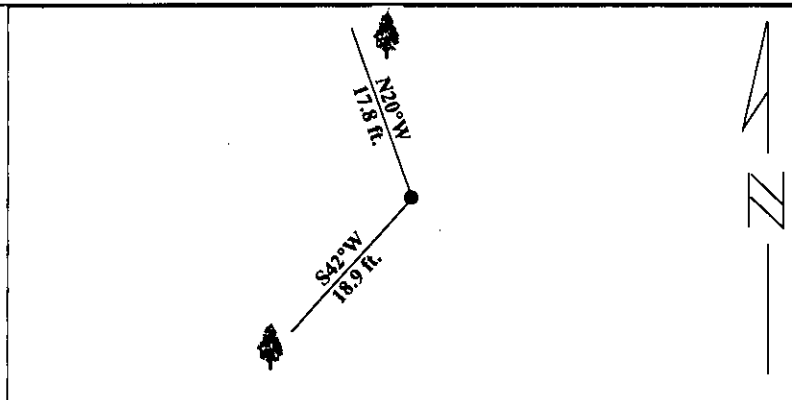
A fir, 13 ins. diam., bears N20°W, 17.8 ft dist., 935 BT visible. (rec. N24°30'W.).

III. Establish one new bearing tree.

A fir, 13 ins. diam., bears S42W,, 18.9 ft. dist., mkd. 6 HES 935 CC BT.

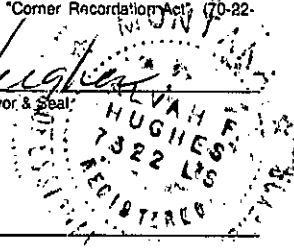
Painted red bands around the bearing trees and attached Land Survey Monument and Bearing Tree signs.

Magnetic Declination: 20° East



SKETCH OF CORNER

CERTIFICATION	
I. <u>Rex O. Rice</u>	
certify the information shown herein is true and correct.	
<i>Rex O. Rice</i>	
Signature Ground Party Chief	
I. <u>Alvah F. Hughes</u>	
certify that this Corner Record correctly represents work performed by me or under my direction in compliance with the "Corner Recordation Act" (70-22-101, et seq., M.C.A.)	
<i>Alvah F. Hughes</i>	
Signature of Surveyor & Seal	
Date: <u>1/30/96</u>	
Reg. No.: <u>7322LS</u>	
Employer: <u>U.S. FOREST SERVICE</u>	



Office of Clerk and Recorder, County of LINCOLN. This "corner record" was filed for record on FEB 20, 1997 was noted on the cross-index plat and is assigned page No. 9235 in book No. _____

CORAL M. CUMMINGS By RLB
 County Official

