

CERTIFIED CORNER RECORDATION

Corner Cor. 8 H.E.S. 935 Sec. 13 T. 31N R. 32W P.M., MT. Lincoln County

- I. 1919 original H.E.S. notes by W.P. Stephenson: Cor. No. 8 of this survey, and closing corner on line between Secs. 13 and 24, establish as follows, set a small stone mkd. with a cross (X) under a limestone, 26 x 16 x 8 ins., 16 ins. in the ground, mkd. 8-HES 935 on SW. face, C.C. on the NW. face, and a cross (X) on top for exact cor. point, from which:

A cross (X) on a fir tree, 18 ins. diam., bears N11°12'E, 16 lks. dist., (10.5 ft.) mkd. 8 HES 935 BT.
A cross (X) on a fir tree, 8 ins. diam., bears S19°32'E, 8 lks. dist., (5.3 ft.) mkd. 8 HES 935 BT.

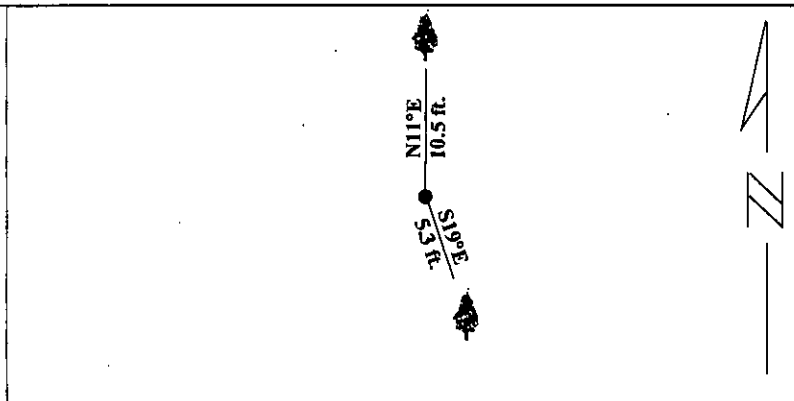
- II. Found a stone, 15x8 ins., 10 ins. out of the ground, firmly set, mkd. 8 HES 935 on SW. face, X on top, and the NW. face is broken off, from which:

A fir, 24 ins. diam., bears N11°E, 10.5 ft dist., mkd. 7 HES 935 BT.
A fir, 13 ins. diam., bears S19°E, 5.3 ft. dist., visible scribe.

- III. No new bearing trees.

Painted red bands around the bearing trees and attached Land Survey Monument and Bearing Tree signs.

Magnetic Declination: 20° East

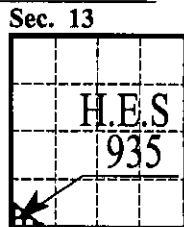


SKETCH OF CORNER

CERTIFICATION	
I. <u>Rex O. Rice</u>	certify the information shown herein is true and correct.
<u>Rex O. Rice</u> Signature Ground Party Chief	
I. <u>Alvah F. Hughes</u>	certify that this Corner Record correctly represents work performed by me or under my direction in compliance with the "Corner Recordation Act" (70-22-101, et seq., M.C.A.)
<u>Alvah F. Hughes</u> Signature of Surveyor & Seal	
Date:	<u>1/30/96</u>
Reg. No.:	<u>7322LS</u>
Employer:	<u>U.S. FOREST SERVICE</u>

Office of Clerk and Recorder, County of LINCOLN. This "corner record" was filed for record on FEB 20, 1997 was noted on the cross-index plat and is assigned page No. 9234 in book No. CORAL M. CUMMINGS BB

County Official



• - corner this sheet