

CERTIFIED LAND CORNER RECORDATION

SECTION 18 TWP. 31 N., R. 33 W., P.M.M.

DESCRIPTION OF CORNER EVIDENCE FOUND, AND ORIGINAL RECORD (IF KNOWN)

Corners found for use in this survey are reported  
in Daigram ON REVERSE SIDE

DESCRIPTION OF MONUMENT AND ACCESSORIES ESTABLISHED  
TO PERPETUATE THE ORIGINAL LOCATION OF THIS CORNER:

Office \_\_\_\_\_ Date of work April, 1980

Set a 5/8"x24" Capped Steel Rod stamped JHN 4661 S  
from which a 12" Cedar Bears S 64° 46' E 22.5 feet Blazed and Scribed

SEE REVERSE SIDE

SKETCH, WITH COURSE AND DISTANCE TO ADJACENT CORNERS IF DETERMINED IN THIS SURVEY.  
(MAY SKETCH OR PASTE REPRODUCTION ON REVERSE SIDE.)

SEE REVERSE SIDE

Surveyor's Seal

Jack H. Ninneman 4661 S

DIAGRAM OF CORNER:

I, \_\_\_\_\_  
certify that the information shown herein is true and  
correct.

N.  
SEE REVERSE SIDE

Jack H. Ninneman  
Signature of Ground Party Chief

I, J.H.Ninneman  
certify that I have carefully performed or reviewed the  
work done on the diagrammed corner as reported on this  
recording form and approve the same.

= Corner recorded on the sheet

Jack H. Ninneman  
Signature of Surveyor

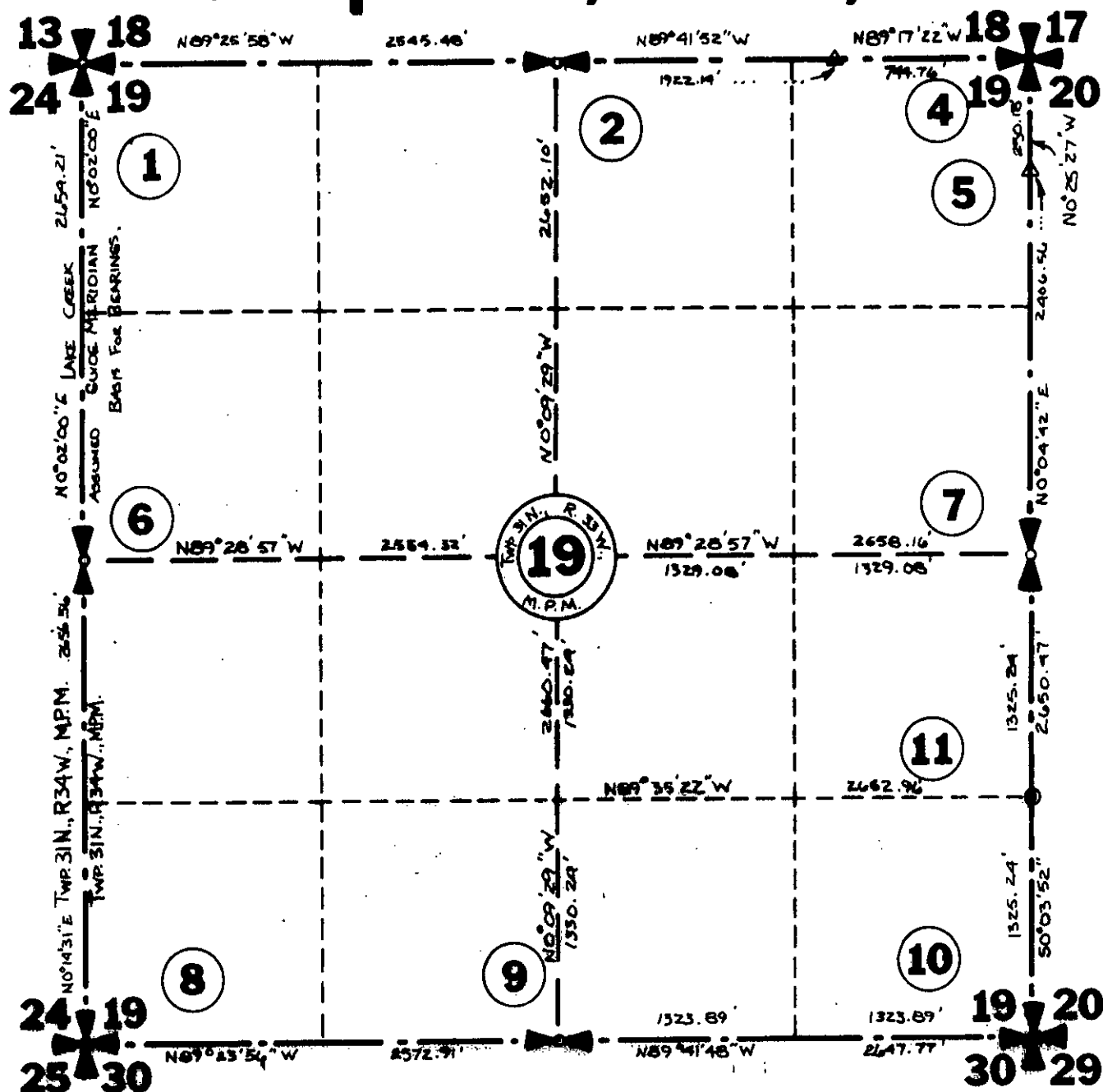
4661 S  
Registration Number

Office of Clerk and Recorder, County of Lincoln

This "corner record" was filed for record on the 31<sup>ST</sup> day of July, 1980, was noted on the cross-index plat and is  
assigned page No. 883, in book No. \_\_\_\_\_

Eleanor L. Vaughn by Sherry L. Hawks  
County Official Deputy

# Sec. 19 Twp. 31 N., R. 33 W., M.P.M. (93)



- (1) Found B.L.M., B.C.
- (2) Found Steel Rod, 2 B.T.s.
- (3) Found M.C. B.C., 2 B.T.s 1 B.T. Stump.
- (4) Found B.L.M. B.C., 4 B.T.s.
- (5) Found M.C. B.C., 2 B.T.s.
- (6) Found B.L.M. B.C.
- (7) Found Stone Marked "1/4" and "X".
- (8) Found B.L.M. B.C.
- (9) Found B.L.M. B.C., 2 B.T.s.
- (10) Found B.L.M. B.C., 4 B.T.s.
- (11) Set 5/8"x 24" Steel Rod with  
Orange Cap stamped: J.H.N. 4661S.  
1 B.T.

