

CERTIFIED LAND CORNER RECORDATION

SEC. 19 TWP. 31 N., R. 33 W., P.M.M.

DESCRIPTION OF CORNER EVIDENCE FOUND, AND ORIGINAL RECORD (IF KNOWN)

At position for E 1/4 Corner found stone marked 1/4 -X on top. All other corners pertinent to this survey are BCs set by BLM - REPORTED ON REVERSE SIDE

DESCRIPTION OF MONUMENT AND ACCESSORIES ESTABLISHED TO PERPETUATE THE ORIGINAL LOCATION OF THIS CORNER:

Office Date of work: July, 1980

For S 1/16 Corner on E. line set a 5/8"x24" Steel rod with Orange cap stamped JHN 4661 S - on Bt.

SEE DIAGRAM ON REVERSE SIDE

SKETCH, WITH COURSE AND DISTANCE TO ADJACENT CORNERS IF DETERMINED IN THIS SURVEY. (MAY SKETCH OR PASTE REPRODUCTION ON REVERSE SIDE.)

SEE DIAGRAM ON REVERSE SIDE

Surveyor's Seal

I, J. H. Ninneman License # 4661 S. certify that the information shown herein is true and correct.

J. H. Ninneman Signature of Ground Party Chief

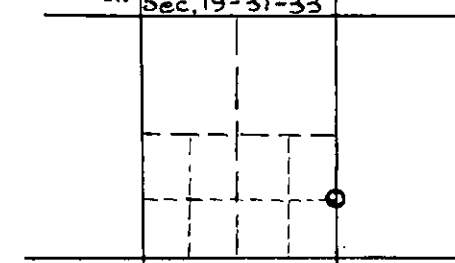
I, Jack H. Ninneman #4661 S certify that I have carefully performed or reviewed the work done on the diagrammed corner as reported on this recordation form and approve the same.

Jack H. Ninneman Signature of Surveyor

4661 S Registration Number

DIAGRAM OF CORNER: See other side

N. Sec. 19-31-33



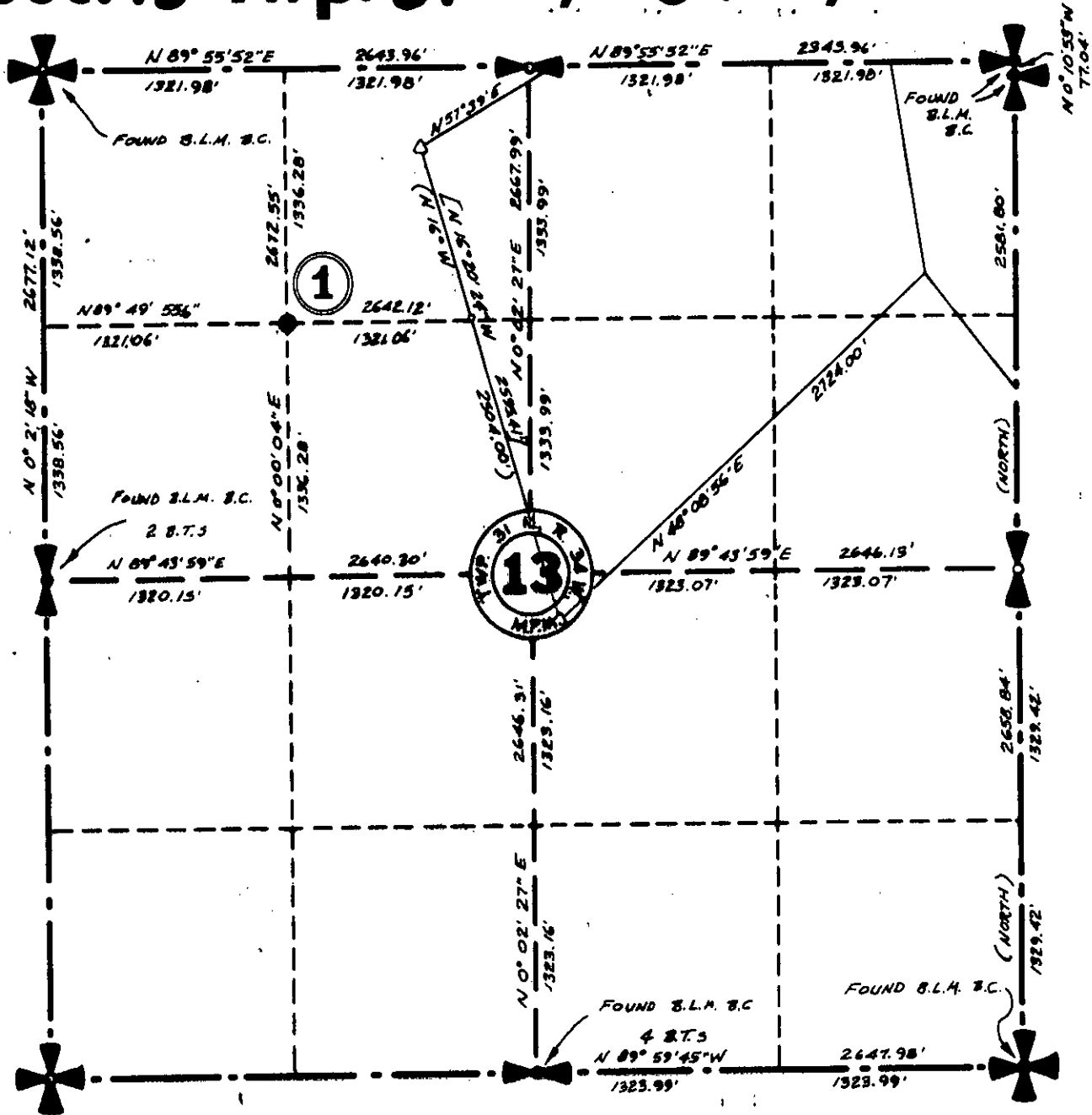
○ = Corner recorded on the sheet

Office of Clerk and Recorder, County of Lincoln

This "corner record" was filed for record on the 31st day of July 1980, was noted on the cross-index plat and is assigned page No. 881, in book No. Eleanor L. Vaughn, County Official, Sherry L. Hawks, Deputy

Sec. 13 Twp. 31 N., R. 34 W., M.P.M.

87



- (1) Set 5/8"x 24" Steel Rod with Yellow Cap Stamped: J.H.N. 4661 S. No B.T.s

