

INSTRUCTIONS

1. Original and/or subsequent record used to evaluate the corner position.
2. Description of evidence found, note discrepancies in the record, state method of establishing lost or obliterated corners.
3. Description of monument and accessories set to perpetuate the corner position.
4. Sketch of corner, show all pertinent data which can best be shown in a sketch example, corner marking, topography ties, position of accessories, etc.
5. Certification must be signed and sealed by Land Surveyor registered in the State of Montana.
6. Fill in Cross Index & Section Diagram at bottom of sheet.

CERTIFIED CORNER RECORDATION

Corner NE sec. cor. sec 1 T. 31 N. R. 34 W. P.M.M. Lincoln County

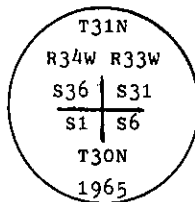
- I. 1893 G.L.O. original record by Daniel P. Mumbrue: "Set a post 4 1/2 ft. long, 4 ins. square, 24 ins. in the ground for Cor. to Tps. 30 & 31 N., Rs. 33 & 34 W. Mkd. four bearing trees.

1910 Resurvey by Lewellyn D. Lyman and Royston C. Durnford: "The Cor. of Tps. 30 & 31 N., Rs. 33 & 34 W. is in poor condition, therefore I set a pine post 3 ft. long, 4 ins. sq., 24 ins. in the ground, for the cor. of Tps. 30 & 31 N., Rs. 33 & 34 W. The cor. is witnessed as described by the surveyor general.

1968 B.L.M. Remonumentation record by Woodrow E. Damm et al: "The cor. of Tps. 30 & 31 N., Rs. 33 & 34 W., marked with an iron bar, 1 in. sq., 24 ins. long, 20 ins. in the ground, witnessed by the remains of one of the original bearing trees.

At the corner point

Set an iron post, 30 ins. long, 2 1/2 ins. diam., 26 ins. in the ground, with brass cap mkd.



from which

The original bearing tree:

A stump, 20 ins. diam., bears N 37 3/4° W, 32 lks. dist., mkd. R3 and other illegible marks. (Record)

The new bearing trees:

A larch, 8 ins. diam., bears N 20 1/2° E, 87 lks. dist., mkd. T31N R33W S31 BT.

A pine, 4 ins. diam., bears S 34° E, 85 lks. dist., mkd. X BT.

A larch, 8 ins. diam., bears S 67 1/2° W, 87 lks. dist., mkd. T30N R34W S1 BT.

Bury the iron bar alongside the iron post.

- II. Found a 2 1/2 ins. diam. iron pipe, 3 ins. above the ground, firmly set with 3 1/4 ins. diam., B.L.M. brass cap, marked as shown above, from which

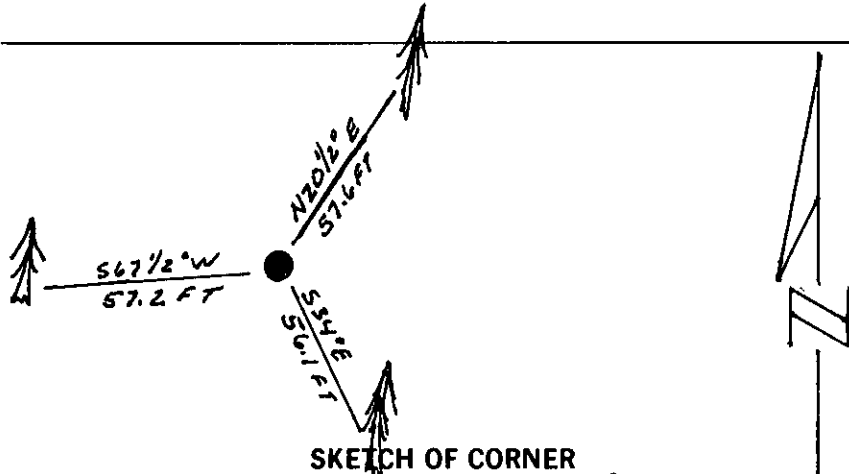
A larch, 14 ins. diam., bears N 20 1/2° E, 57.6 ft. (87 lks) dist., healed face.

A pine, 8 ins. diam., bears S 34° E, 56.1 ft. (85 lks.) dist., healed face.

A larch, 14 ins. diam., bears S 67 1/2° W, 57.2 ft. (87 lks.) dist., healed face.

- III. Painted red bands around the bearing trees and attached Land Survey Monument and Bearing Tree signs.
Set a 6 ft. galvanized steel guard post with Land Survey Marker and Property Boundary decals attached, South, 3 ft.

Magnetic Declination: 20° East



SKETCH OF CORNER

CERTIFICATION

Kenneth R. Kern

I, _____
certify the information shown herein is true and correct.

Signature Ground Party Chief

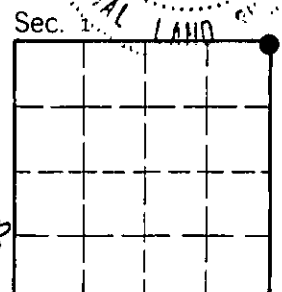
Alvah F. Hughes

I, _____
certify that this Corner Record correctly represents work performed by me or under my direction in compliance with the "Corner Recordation Act" (70-22-101, et seq., M.C.A.).

Signature of Surveyor Seal HUGHES
Date: 12/16/93 Reg. No. 7322
Employer: U.S. FOREST SERVICE

Office of Clerk and Recorder, County of Lincoln. This "corner record" was filed for record on Jan 12, 1994 was noted on the cross-index plat and is assigned page No. 6081, in book No. _____

Cross Index No. A-25 T. 31 N R. 34 W P.M.M.



• - corner this sheet