

INSTRUCTIONS

1. Original and/or subsequent record used to evaluate the corner position.
2. Description of evidence found, note discrepancies in the record, state method of establishing lost or obliterated corners.
3. Description of monument and accessories set to perpetuate the corner position.
4. Sketch of corner, show all pertinent data which can best be shown in a sketch example, corner marking, topography ties, position of accessories, etc.
5. Certification must be signed and sealed by Land Surveyor registered in the State of Montana.
6. Fill in Cross Index & Section Diagram at bottom of sheet.

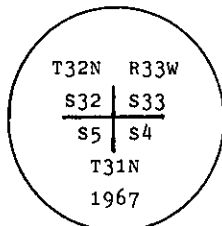
CERTIFIED CORNER RECORDATION

Corner N.W. of Sec. 4 T. 31 N. R. 33 W. P.M.M. Lincoln County

I. 1893 G.L.O. original record by D. P. MUMBRUE: Set a square post, and 4 bearing trees.

1967 B.L.M. remonumentation record by D. LINDENBERG et al: The cor. of secs. 4, 5, 32, & 33, monumented with the decayed remains of the original post, 4 ft. long, 4 ins. square, and witnessed by the remains of the original bearing trees.

At the corner point, set an iron post, 30 ins. long, 2 1/2 ins. diam., 24 ins. in the ground, with brass cap mkd. as shown:



from which the original bearing trees:

- A larch snag, 12 ins. diam., bears N 41 1/4° E, 24 lks. dist., mkd. T32N R33W S33 BT. (Record)
- A fir, 10 ins. diam., bears S 11° E, 33 lks. dist., mkd. with overgrown blaze. (Record)
- A fir, 20 ins. diam., bears S 59 3/4° W, 40 lks. dist., mkd. with an overgrown blaze. (Record)
- A fir, 10 ins. diam., bears N 76° W, 50 lks. dist., mkd. with an overgrown blaze. (Record)

The new bearing tree:

- A fir, 7 ins. diam., bears N 26 1/2° E, 17 lks. dist., mkd. T32N R33W S33 BT.

Bury the remains of the original post alongside the iron pipe.

II. Found a 2 1/2 in. diam. iron pipe, 6 ins. above ground, firmly set, with B.L.M. brass cap mkd. as shown above, from which:

- A fir, 11 ins. diam., bears N26° E, 11.2 ft. (16.9 lks.) dist., healed face.
- A depression in the ground, bears N41° E, 16.0 ft. (24.2 lks.) dist.
- A fir, 21 ins. diam., bears S8° E, 21.8 ft. (33.0 lks.) dist., healed face.
- A fir stump, 28 ins. diam., bears S56° W, 26.4 ft. (40.0 lks) dist., healed face.
- A fir, 23 ins. diam., bears N76° W, 34.0 ft. (51.5 lks.) dist., healed fac.

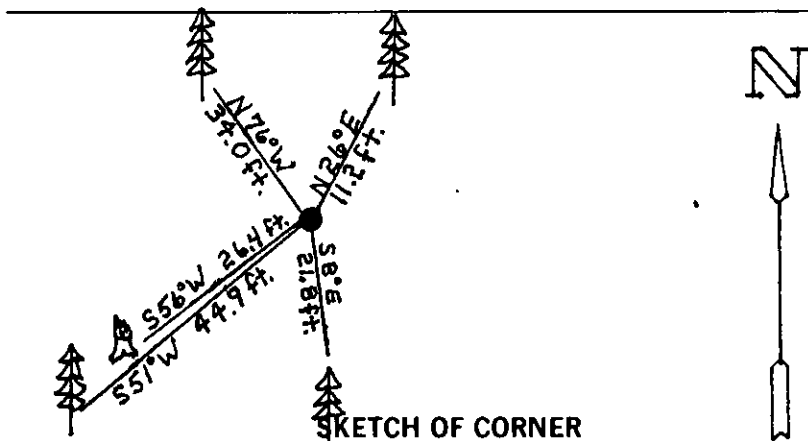
III. Established one new bearing tree:

- A fir, 18 ins. diam., bears S51° W, 44.9 ft. dist., mkd. T31N R33W S5 BT.

Painted a red band around bearing trees and attached Land Survey Monument and Bearing Tree signs.

Set a 6 ft. galvanized steel guard post with Land Survey Marker and Property Bounday decals, EAST, 3 feet.

Magnetic Declination: 20° East.



SKETCH OF CORNER

CERTIFICATION

I, Rex O. Rice

certify the information shown herein is true and correct.

Rex O. Rice

Signature Ground Party Chief

I, Alvah F. Hughes

certify that this Corner Record correctly represents work performed by me or under my direction in compliance with the "Corner Recordation Act" (70-22-101, et seq., M.C.A.)

Alvah F. Hughes

Signature of Surveyor

Date: 12/21/93 Reg. No. 73221

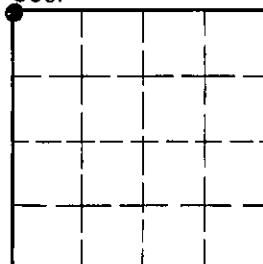
Employer: U.S. FOREST SERVICE

Office of Clerk and Recorder, County of Lincoln. This "corner record" was filed for record on Jan 12, 1994 was noted on the cross-index plat and is assigned page No. 6076, in book No. Coral M. Cummings By DB

County Official

Cross Index No. A-9 T. 31 N R. 33 W P.M.M.

Sec. 4



• - corner this sheet