

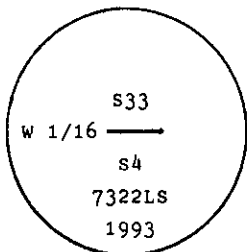
INSTRUCTIONS

1. Original and/or subsequent record used to evaluate the corner position.
2. Description of evidence found, note discrepancies in the record, state method of establishing lost or obliterated corners.
3. Description of monument and accessories set to perpetuate the corner position.
4. Sketch of corner, show all pertinent data which can best be shown in a sketch example, corner marking, topography ties, position of accessories, etc.
5. Certification must be signed and sealed by Land Surveyor registered in the State of Montana.
6. Fill in Cross Index & Section Diagram at bottom of sheet.

CERTIFIED CORNER RECORDATION

Corner W 1/16 of Sec. 4 T. 31 N. R. 33 W. P.M.M. Lincoln County

- I. No original record.
- II. No original record.
- III. At the position determined by survey, set a 2 1/2 in. diam., 30 in. long aluminum pipe, 24 ins. in the ground, with a 3 1/4 in. U.S.D.A. Forest Service aluminum cap marked as shown:



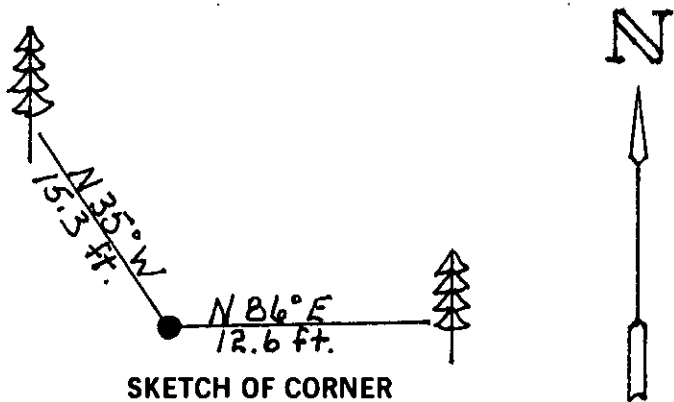
Established two bearing trees:

- A fir, 18 ins. diam., bears N86° E, 12.6 ft dist., scribed W 1/16 S 33 BT.
- A fir, 6 ins. diam., bears N35° W, 15.3 ft dist., scribed W 1/16 S33 BT.
- (No suitable trees within reasonable distance in sec. 4.)

Painted a red band around bearing trees and attached Land Survey Monument and Bearing Tree signs.

Set a 6 ft. galvanized steel post with Land Survey Marker and Property Boundary decals, SOUTH, 3 ft.

Magnetic Declination: 20° East.



SKETCH OF CORNER

CERTIFICATION

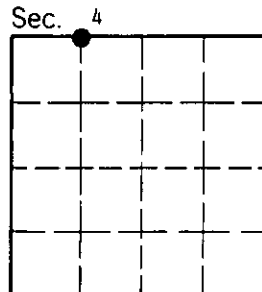
I, Rex O. Rice  
 certify the information shown herein is true and correct.  
Rex O. Rice  
 Signature Ground Party Chief

I, Alvah F. Hughes  
 certify that this Corner Record correctly represents work performed by me or under my direction in compliance with the "Corner Recordation Act" (70-22-101, et seq. M.C.A.)  
Alvah F. Hughes  
 Signature of Surveyor & Seal

Date: 12/21/93 Reg. No. 7322LS  
 Employer: U.S. FOREST SERVICE

Office of Clerk and Recorder, County of Lincoln. This "corner record" was filed for record on Jan 12, 1994 was noted on the cross-index plat and is assigned page No. 6075, in book No. \_\_\_\_\_

Coral M. Cumming, RB  
 County Official



Cross Index No. A-10 T. 31 N. R. 33 W. P.M.M.

• - corner this sheet