

INSTRUCTIONS

1. Original and/or subsequent record used to evaluate the corner position.
2. Description of evidence found, note discrepancies in the record, state method of establishing lost or obliterated corners.
3. Description of monument and accessories set to perpetuate the corner position.
4. Sketch of corner, show all pertinent data which can best be shown in a sketch example, corner marking, topography ties, position of accessories, etc.
5. Certification must be signed and sealed by Land Surveyor registered in the State of Montana.
6. Fill in Cross Index & Section Diagram at bottom of sheet.

CERTIFIED CORNER RECORDATION

Corner N 1/4 of Sec. 4 T. 31 N. R. 33 W. P.M.M. Lincoln County

- I. 1893 G.L.O. original record by D. P. MUMBRUE: Set a post, 3 ft. long, 3 ins. square, 24 ins. in the ground, for 1/4 Sec. Cor., marked 1/4 S. on NORTH face, from which:

A pine, 24 ins. diam., bears N3° E., 235 lks. dist., mkd. 1/4 S BT.

A fir, 12 ins. diam., bears S7° E., 205 lks. dist., mkd. 1/4 S BT.

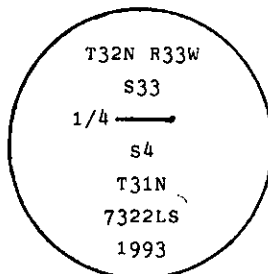
- II. No corner monument found.

Found bearing trees:

A fir, 30 ins. diam., bears S7° E., 135.9 ft. (205.9 lks.) dist., healed face.

A pine, 25 ins. diam., bears N3° W, 155.8 ft. (236.0 lks) dist., "T" visible. (rec. N3° E)

- III. At the corner point, determined by a dist.- dist. intersect from found bearing trees, and checked with bearings, set a 2 1/2 in. diam., 30 in. long aluminum pipe, 20 ins. in the ground, with a 3 1/4 in. U.S.D.A. Forest Service aluminum cap mkd. as shown:



Raised mound of stone around pipe.

Established two new bearing trees:

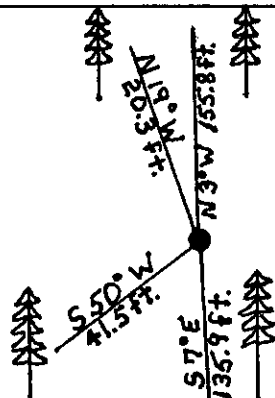
A fir, 15 ins. diam., bears S50° W, 41.5 ft. dist., scribed 1/4 S 4 BT.

A fir, 9 ins. diam., bears N19° W, 20.3 ft. dist., scribed 1/4 S 33 BT.

Painted a red band around bearing trees and attached Land Survey Monument and Bearing Tree signs.

No guard post set.

Magnetic Declination: 20° East.



SKETCH OF CORNER

CERTIFICATION

I, Rex O. Rice

certify the information shown herein is true and correct.

Rex O. Rice

Signature Ground Party Chief

I, Alvah F. Hughes

certify that this Corner Record correctly represents work performed by me or under my direction in compliance with the "Corner Recordation Act" (70-22-101, et seq., M.C.A.)

Alvah F. Hughes

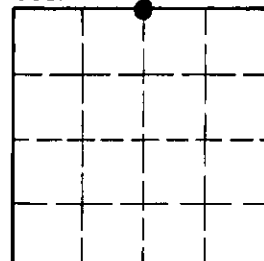
Signature of Surveyor & Seal

Date: 12/21/93 Reg. No. 7322LS

Employer: U.S. FOREST SERVICE

Office of Clerk and Recorder, County of Lincoln. This "corner record" was filed for record on Jan 12, 1994 was noted on the cross-index plat and is assigned page No. 6071, in book No. Coral M. Cumming By DB County Official

Sec. 4



• - corner this sheet

Cross Index No. A-11 T. 31 N R. 33 W PMM