

INSTRUCTIONS

1. Original and/or subsequent record used to evaluate the corner position.
2. Description of evidence found, note discrepancies in the record, state method of establishing lost or obliterated corners.
3. Description of monument and accessories set to perpetuate the corner position.
4. Sketch of corner, show all pertinent data which can best be shown in a sketch example, corner marking, topography ties, position of accessories, etc.
5. Certification must be signed and sealed by Land Surveyor registered in the State of Montana.
6. Fill in Cross Index & Section Diagram at bottom of sheet.

CERTIFIED CORNER RECORDATION

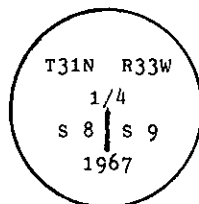
Corner E 1/4 of Sec. 8 T. 31 N. R. 33 W. P.M.M. Lincoln County

I. 1893 G.L.O. original record by D. P. MUMBRUE: Set a quartzite stone, and 2 bearing trees.

1967 B.L.M. remonumentation record by J. E. FRENCH et al: The 1/4 corner of secs. 8 and 9, monumented with a loosely set quartzite stone, 20 x 10 x 6 ins., mkd. 1/4 on the W. face, and witnessed by the remains of the original bearing tree:

A pine stump, 20 ins. diam., bears S. $75\frac{3}{4}^{\circ}$ W., 29 lks. dist., mkd. 1/4 S.(record)

At the corner point, set an iron post, 30 ins. long, 2 1/2 ins. diam., 24 ins. in the ground, with brass cap mkd. as shown:



from which new bearing trees:

A larch, 7 ins. diam., bears S. 87° E., 44 lks. dist., mkd. 1/4 S9 BT.

A fir, 7 ins. diam., bears S. $57\frac{1}{2}^{\circ}$ W., 23 lks. dist., mkd. 1/4 S8 BT.

Bury the original stone alongside the iron post.

II. Found a 2 1/2 in. diam. iron pipe, pushed over by logging activity, with 3 1/2 in. B.L.M. brass cap mkd. as shown above, from which:

A pine stump, 16 ins. diam., bears S 76° W, 19.1 ft. (28.9ks.) dist., "1/4" visible.

A larch, 10 ins. diam., bears S 87° E, 15.7 ft. (23.7 lks) dist., healed face.

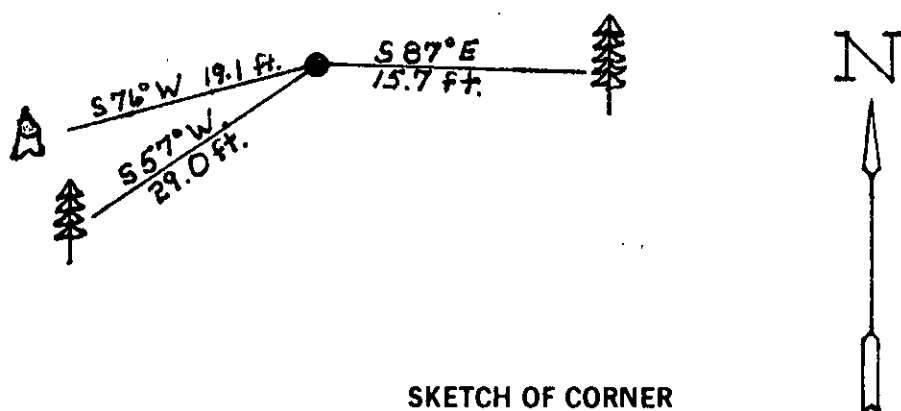
A fir, 10 ins. diam., bears S 57° W, 29.0 ft. (43.9 lks.) dist., healed face.

III. Straightened pipe to original position and verified by found bearing trees.

Painted a red band around bearing trees and attached Land Survey Monument and Bearing Tree signs.

No guard post set.

Magnetic Declination: 20° East.



SKETCH OF CORNER

CERTIFICATION

Thomas M. Hommel

I. certify the information shown herein is true and correct.

Signature of Ground Party Chief

Alvah F. Hughes

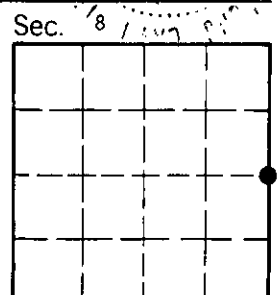
I. certify that this Corner Record correctly represents work performed by me or under my direction in compliance with the "Corner Recordation Act" (70-22-101, et seq., M.C.A.)

Signature of Surveyor & Seal

Date: 12/21/93 Reg. No. 73221S

Employer: U.S. FOREST SERVICE

Office of Clerk and Recorder, County of Lincoln. This "corner record" was filed for record on Jan 12, 1994 was noted on the cross-index plat and is assigned page No. 6070, in book No. Coral M. Cummings & Co. County Official



• - corner this sheet

Cross Index No. G-9 T. 31 N R. 33 W P.M.M.