

CERTIFIED LAND CORNER RECORDATION

DESCRIPTION OF CORNER EVIDENCE FOUND, AND ORIGINAL RECORD (IF KNOWN)

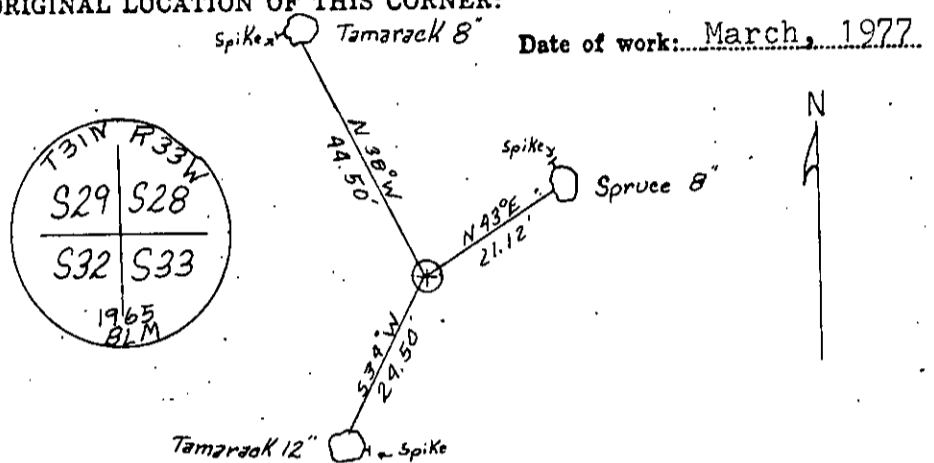
GLO Record; Set a post 4 ft. long, 4 ins. square, 24 ins. in ground.
 Fir, 14 ins. in dia. bears N 54 30' E 40 lks.
 Hemlock, 12 ins. in dia. bears S 59 E 36 lks.
 Pine, 28 ins. in dia. bears S 53 30' W 33 lks.
 Fir, 14 ins. in dia. bears N 57 W 90 lks.,

Found;

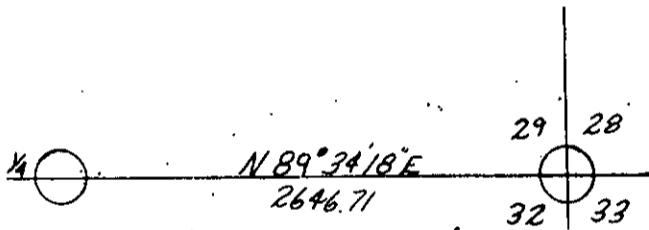
BLM Brass Cap

DESCRIPTION OF MONUMENT AND ACCESSORIES ESTABLISHED TO PERPETUATE THE ORIGINAL LOCATION OF THIS CORNER:

Found BLM Brass Cap marked as shown. Bearings are to center of RM, distances are to spike in side.



SKETCH, WITH COURSE AND DISTANCE TO ADJACENT CORNERS IF DETERMINED IN THIS SURVEY. (MAY SKETCH OR PASTE REPRODUCTION ON REVERSE SIDE.)



Surveyor's Seal

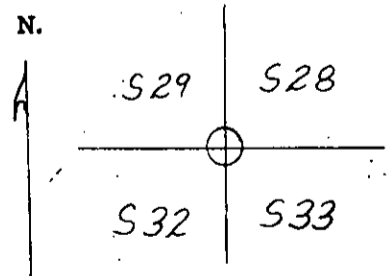
I, S. R. Smith
 certify that the information shown herein is true and correct.

S. R. Smith
 Signature of Ground Party Chief

I, D. K. Marquardt
 certify that I have carefully performed or reviewed the work done on the diagrammed corner as reported on this recordation form and approve the same.

D. K. Marquardt
 Signature of Surveyor

DIAGRAM OF CORNER: T31N R33W



⊕ = Corner recorded on the sheet

2989 ES
 Registration Number

Office of Clerk and Recorder, County of Lincoln

This "corner record" was filed for record on the 14th day of June, 1977, was noted on the cross-index plat and is

assigned page No. 498, in book No. 1

Eleanor L. Daugherty
 County Official