

CERTIFIED LAND CORNER RECORDATION

DESCRIPTION OF CORNER EVIDENCE FOUND, AND ORIGINAL RECORD (IF KNOWN)

GLO Record; Set a post 3 ft. long, 3 ins. square; 24 ins. in ground.

Pine, 8 ins. in dia. bears N 54 E 6 lks.

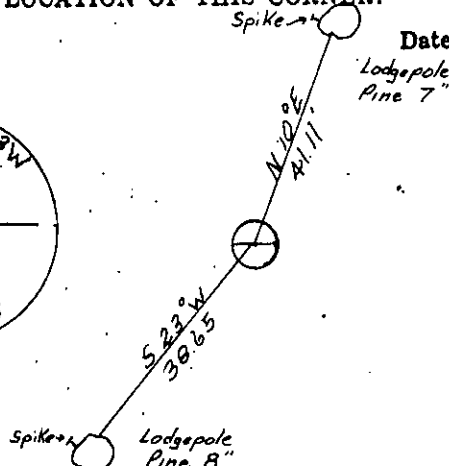
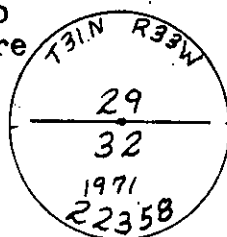
Fir, 14 ins. in dia. bears S 67 30' W 40 lks.

Found;

2" Brass Cap

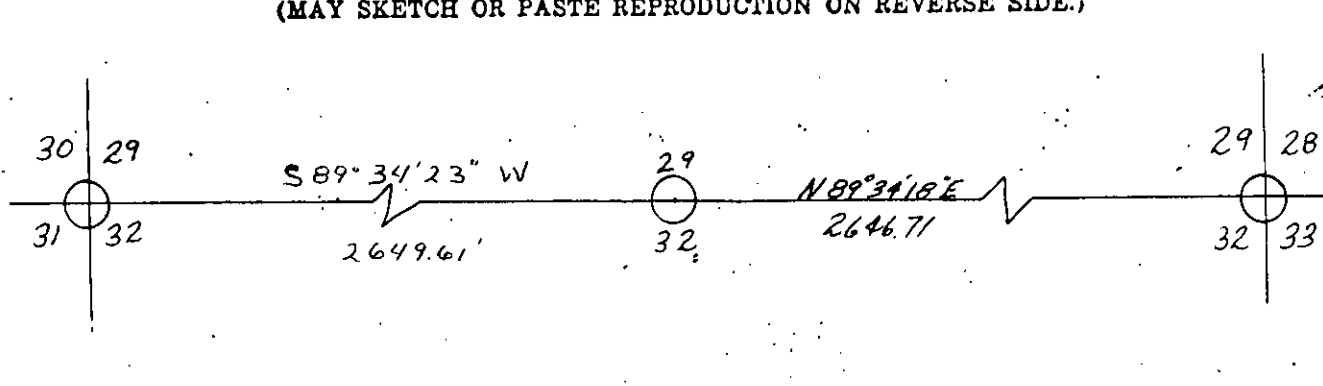
DESCRIPTION OF MONUMENT AND ACCESSORIES ESTABLISHED TO PERPETUATE THE ORIGINAL LOCATION OF THIS CORNER:

Found 2" brass Cap marked as shown. Bearings are to center of RM, distances are to spike in side.



Date of work: March, 1977

SKETCH, WITH COURSE AND DISTANCE TO ADJACENT CORNERS IF DETERMINED IN THIS SURVEY. (MAY SKETCH OR PASTE REPRODUCTION ON REVERSE SIDE.)



Surveyor's Seal

I, S. R. Smith

certify that the information shown herein is true and correct.

S. R. Smith

Signature of Ground Party Chief

I, D. K. Marquardt

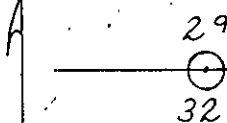
certify that I have carefully performed or reviewed the work done on the diagrammed corner as reported on this recordation form and approve the same.

D. K. Marquardt

Signature of Surveyor

DIAGRAM OF CORNER:
T31N R33W

N.



⊙ = Corner recorded on the sheet

2989 ES

Registration Number

Office of Clerk and Recorder, County of Lincoln

This "corner record" was filed for record on the 14th day of June, 1977, was noted on the cross-index plat and is

assigned page No. 496, in book No. 1

Charles L. Daugherty by Betty H. Hatcher
County Official Deputy