

# CERTIFIED LAND CORNER RECORDATION

## DESCRIPTION OF CORNER EVIDENCE FOUND, AND ORIGINAL RECORD (IF KNOWN)

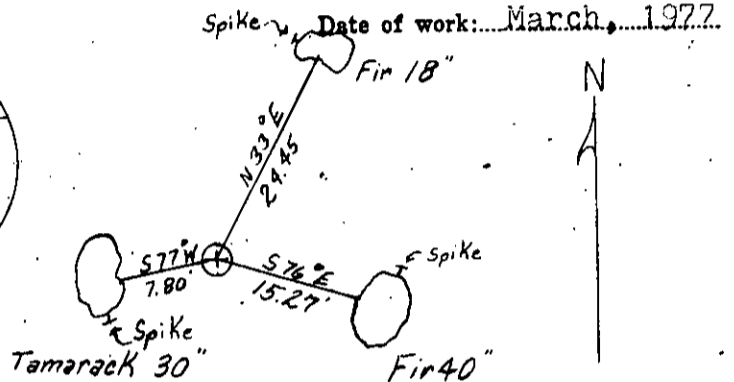
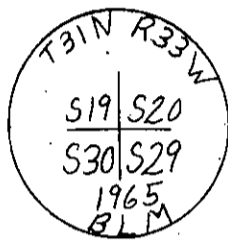
GLO Record; Set a post 4 ft. long, 4 ins. square, 24 ins. in ground.  
 Fir, 24 ins in dia. bears N 45 45' E 70 lks.  
 Fir, 18 ins in dia. bears S 75 45'E 24 lks.  
 Tamarack, 24 ins in dia. bears S 4 15' W 42 lks.  
 Tamarack, 16 ins in dia. bears N 32 30' W 39 lks.

Found;

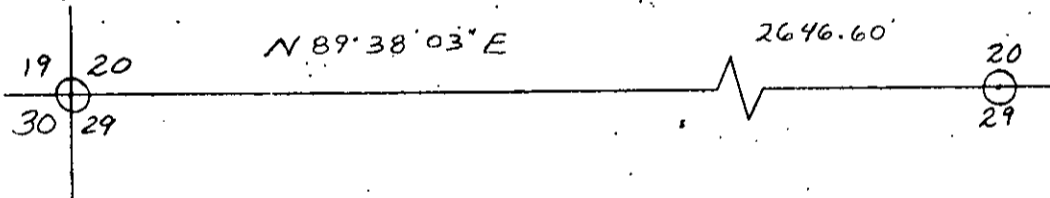
BLM Brass Cap

## DESCRIPTION OF MONUMENT AND ACCESSORIES ESTABLISHED TO PERPETUATE THE ORIGINAL LOCATION OF THIS CORNER:

Found BLM brass cap marked as shown. Bearings are to center of RM, distances are to spike in side.



## SKETCH, WITH COURSE AND DISTANCE TO ADJACENT CORNERS IF DETERMINED IN THIS SURVEY. (MAY SKETCH OR PASTE REPRODUCTION ON REVERSE SIDE.)



Surveyor's Seal

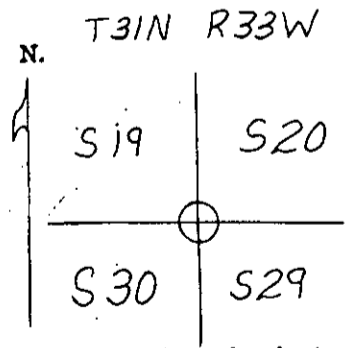
I, S. R. Smith  
 certify that the information shown herein is true and correct.

S. R. Smith  
 Signature of Ground Party Chief

I, D. K. Marquardt  
 certify that I have carefully performed or reviewed the work done on the diagrammed corner as reported on this recordation form and approve the same.

D. K. Marquardt ⊕  
 Signature of Surveyor

### DIAGRAM OF CORNER:



⊕ = Corner recorded on the sheet

2989 ES  
 Registration Number

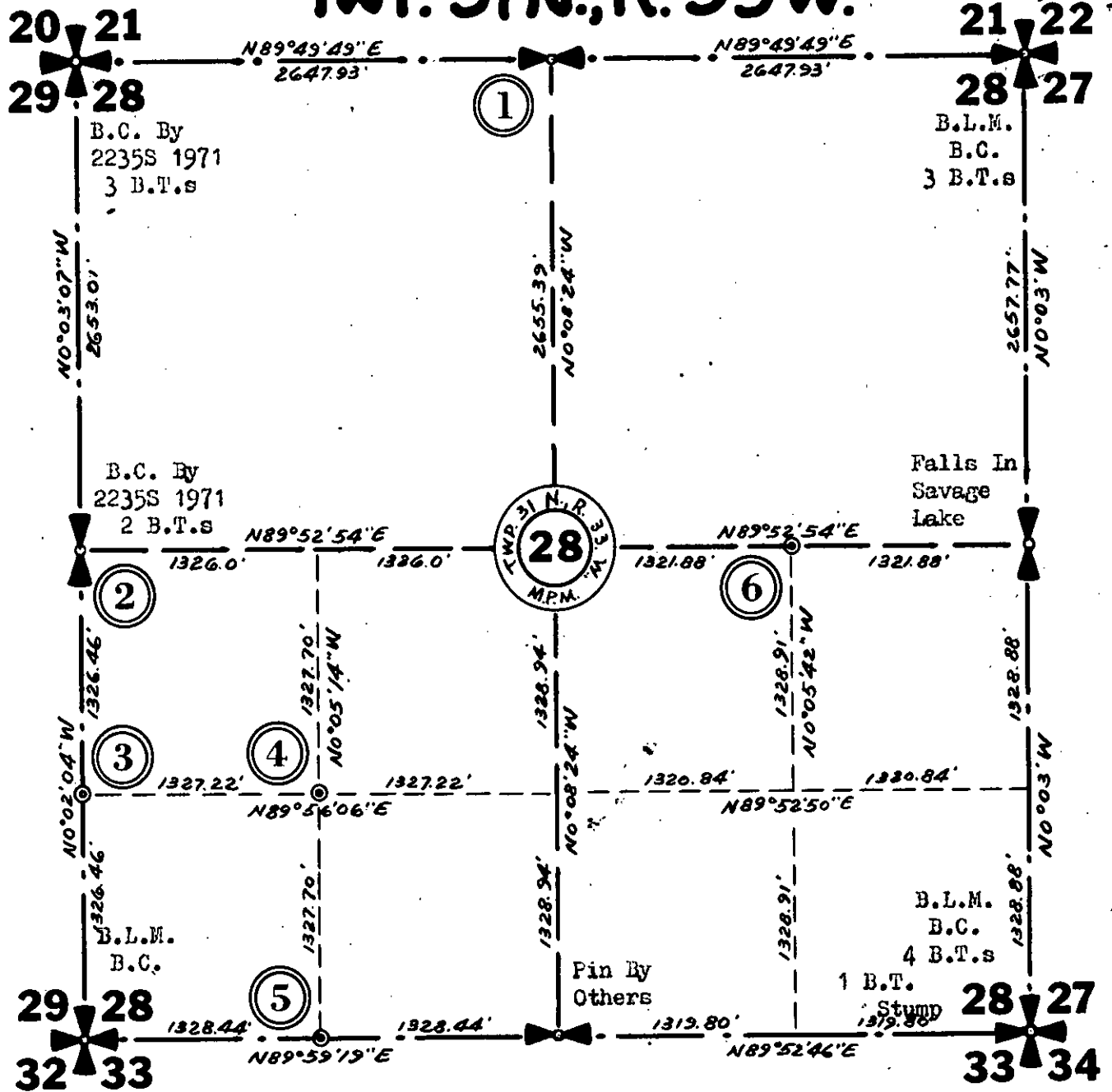
Office of Clerk and Recorder, County of Lincoln

This "corner record" was filed for record on the 14<sup>th</sup> day of June, 1977, was noted on the cross-index plat and is assigned page No. 494, in book No. 1

Thomas L. Daugherty  
 County Official

Cross Index No. 494 T. 31 N. R. 33 W. Mer. R-5

# TWP. 31 N., R. 33 W.



- (1) Set  $\frac{1}{2}$ " x 24" Steel Rod with No B.T.s  
Cap Stamped: J.N. 534 E.S.
- (2) B.C. By 2235S. in 1971 2 B.T.s  
Set Location Poster S80°W 14.1 Ft. on 24" Cedar.
- (3) Brass Cap By: 10" Pine bears N82°W 9.3 Ft.  
J.N. 534 E.S. in 1972 10" Pine bears S28°E 22.1 Ft.  
Both Trees Scribed S 1/16 BT & Posted.
- (4) Brass Cap By: No B.T.s Available  
J.N. 534 E.S. in 1972
- (5) Set  $\frac{1}{2}$ " x 24" Steel Rod with 14" Fir bears S6°E 5.3 Ft. Scribed SW 1/16 S28 BT & Posted.  
Cap Stamped: J.N. 534 E.S. Location Poster on Corner Fence Post N15°E 3.1 Ft.
- (6) Pin By Others Set Location Poster on Power Pole S30°E 48.4 Ft.  
Centerline Montana State Highway No. 202 West 22.5 Ft.±