

CERTIFIED LAND CORNER RECORDATION

SECTION 28 TWP. 31 N., R. 33 W., M.P.M.

DESCRIPTION OF CORNER EVIDENCE FOUND, AND ORIGINAL RECORD (IF KNOWN)

NW Corner found B.C. by 2235 S - 1971 - 3 B.T.s
NE Corner found B.C. by B.L.M. 3 B.T.s
W 1/4 Corner found B.C. by 2235 S - 1971 - 2 B.T.s
SW Corner found B.C. by B.L.M.
S 1/4 found pin by others
SE Corner found B.C. by B.L.M. - 4 B.T.s

DESCRIPTION OF MONUMENT AND ACCESSORIES ESTABLISHED TO PERPETUATE THE ORIGINAL LOCATION OF THIS CORNER:

Date of work: April 1976

SEE REVERSE SIDE

SKETCH, WITH COURSE AND DISTANCE TO ADJACENT CORNERS IF DETERMINED IN THIS SURVEY. (MAY SKETCH OR PASTE REPRODUCTION ON REVERSE SIDE.)

SEE REVERSE SIDE

DIAGRAM OF CORNER:

Surveyor's Seal

I, Jack H. Ninneman certify that the information shown herein is true and correct.

Signature of Jack H. Ninneman
Signature of Ground Party Chief

N.
See reverse Side

I, Jack W. Ninneman certify that I have carefully performed or reviewed the work done on the diagrammed corner as reported on this recordation form and approve the same.

Signature of Jack W. Ninneman
Signature of Surveyor

= Corner recorded on the sheet

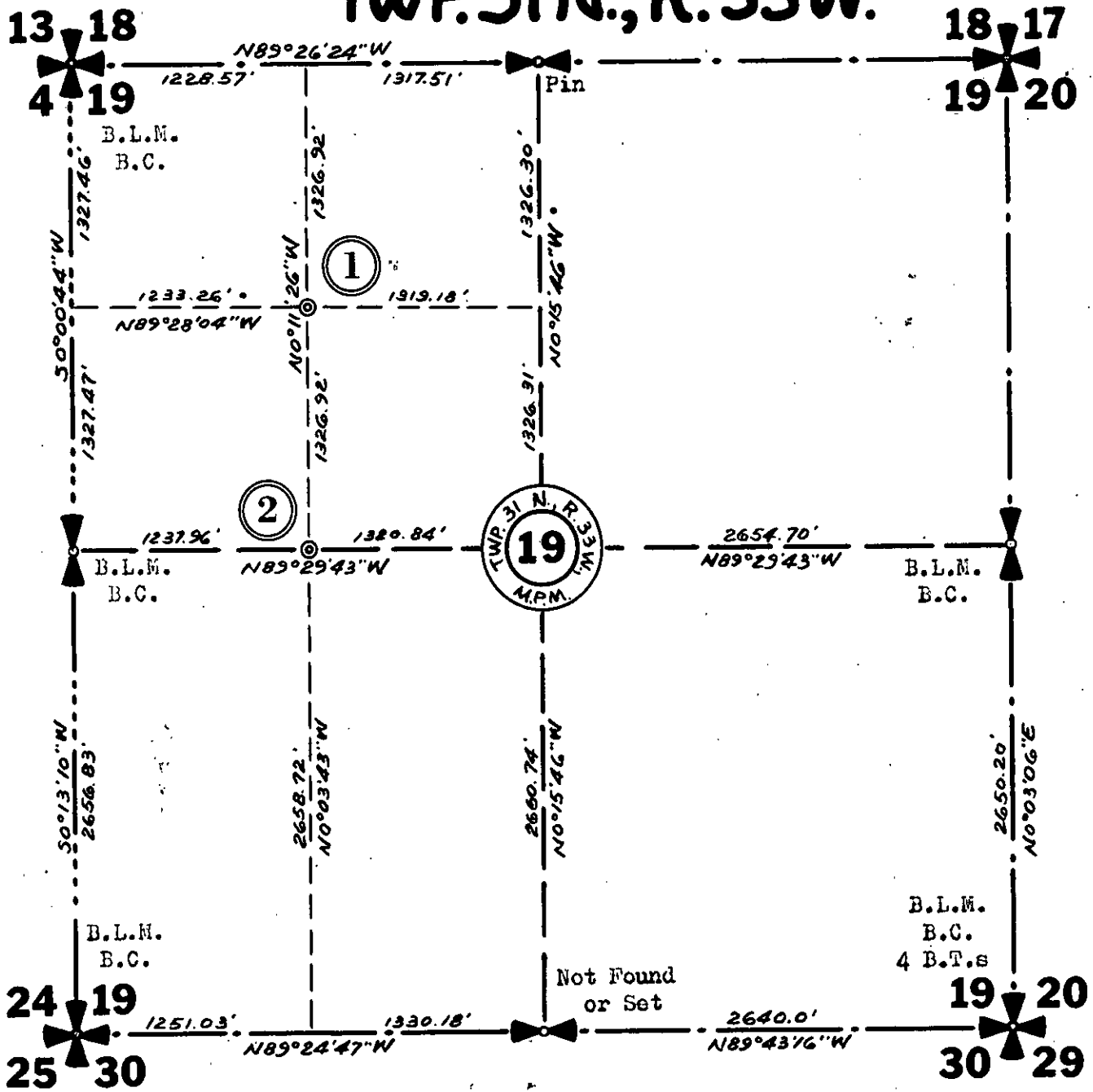
534 E.S.
Registration Number

Office of Clerk and Recorder, County of Lincoln

This "corner record" was filed for record on the 9th day of June 1976, was noted on the cross-index plat and is assigned page No. 482, in book No. 1

Eleonora Vaughn by Sherry Davis, deputy
County Official

# TWP. 31 N., R. 33 W.



(1) Set  $\frac{1}{2}$ " x 24" Steel Rod with  
Cap Stamped: J.N. 534 E.S.

8" Fir bears S  $81^{\circ}22'$  E 7.3 Ft.  
8" Fir bears S  $58^{\circ}50'$  W 8.2 Ft.  
Both Trees Scribed NW  $\frac{1}{16}$  S19 BT & Posted.

(2) Set  $\frac{1}{2}$ " x 24" Steel Rod with  
Cap Stamped: J.N. 534 E.S.

14" Pine bears S  $42^{\circ}30'$  E 14.2 Ft.  
Scribed CW  $\frac{1}{16}$  S19 BT & Posted.  
8" Fir bears N  $40^{\circ}$  W 18.6 Ft.  
Scribed CW  $\frac{1}{16}$  S19 BT & Posted.  
Location Poster on 3" Fir South 9.0 Ft.