

CERTIFIED LAND CORNER RECORDATION

SECTION 19 TWP. 31 N., R. 33 W., M.P.M.

DESCRIPTION OF CORNER EVIDENCE FOUND, AND ORIGINAL RECORD (IF KNOWN)

NW Corner found B.C. by B.L.M.  
N  $\frac{1}{4}$  Corner found Pin by Others  
W  $\frac{1}{4}$  Corner found B.C. by B.L.M.  
E  $\frac{1}{4}$  Corner found B.C. by B.L.M.  
SW Corner found B.C. by B.L.M.  
SE Corner found B.C. by B.L.M. 4 B.T.s

DESCRIPTION OF MONUMENT AND ACCESSORIES ESTABLISHED,  
TO PERPETUATE THE ORIGINAL LOCATION OF THIS CORNER:

Date of work: April 1976

SEE REVERSE SIDE

SKETCH, WITH COURSE AND DISTANCE TO ADJACENT CORNERS IF DETERMINED IN THIS SURVEY.  
(MAY SKETCH OR PASTE REPRODUCTION ON REVERSE SIDE.)

SEE REVERSE SIDE

Surveyor's Seal

I, Jack H. Ninneman  
certify that the information shown herein is true and correct.

*Jack H. Ninneman*  
Signature of Ground Party Chief

I, Jack W. Ninneman  
certify that I have carefully performed or reviewed the work done on the diagrammed corner as reported on this recordation form and approve the same.

*Jack W. Ninneman*  
Signature of Surveyor

DIAGRAM OF CORNER:

N.  
See reverse  
Side

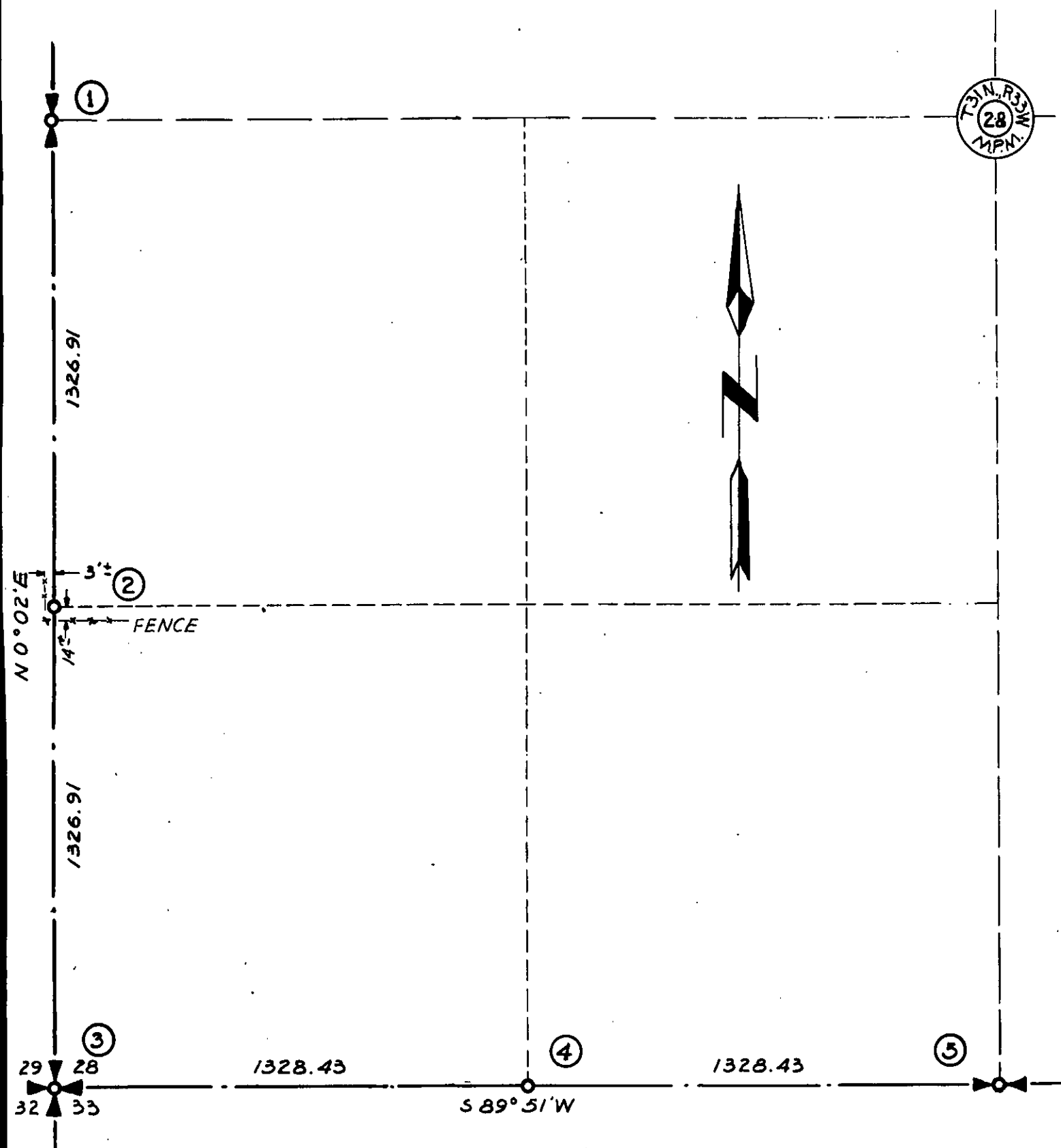
= Corner recorded on the sheet

534 E.S.  
Registration Number

Office of Clerk and Recorder, County of Lincoln

This "corner record" was filed for record on the 9<sup>th</sup> day of June 1976, was noted on the cross-index plat and is assigned page No. 479, in book No. 1

*Eleanor Z. Vaughn* by *Sherry Davis*  
County Official, deputy



B-229