

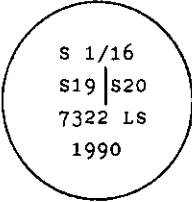
INSTRUCTIONS

1. Original and/or subsequent record used to evaluate the corner position.
2. Description of evidence found, note discrepancies in the record, state method of establishing lost or obliterated corners.
3. Description of monument and accessories set to perpetuate the corner position.
4. Sketch of corner, show all pertinent data which can best be shown in a sketch example, corner marking, topography ties, position of accessories, etc.
5. Certification must be signed and sealed by Land Surveyor registered in the State of Montana.
6. Fill in Cross Index & Section Diagram at bottom of sheet.

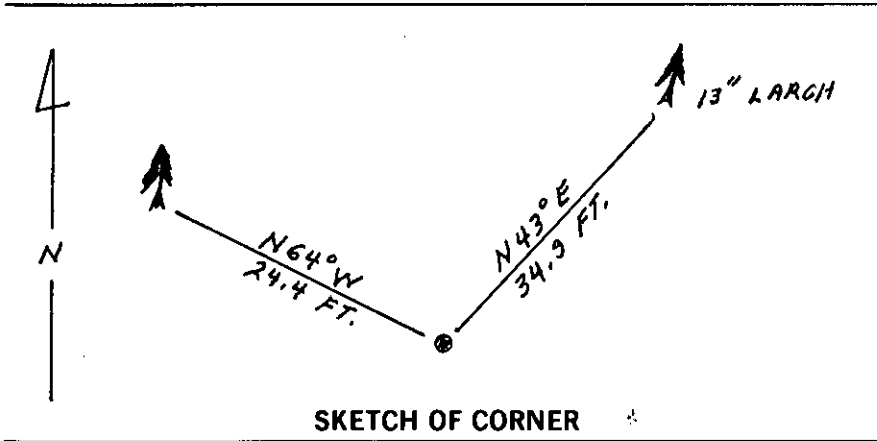
CERTIFIED CORNER RECORDATION

Corner S 1/16 Sec. 20 T. 31 N. R. 33 W. P.M.M. Lincoln County

- I. Refer to the "Wilderness Plateau" Subdivision Plat No. 3928 dated March, 1982, filed by Jack H. Ninneman. Mr. Ninneman set a 5/8 in. diam. by 24 in. long rebar with a yellow plastic cap, mkd. JHN 4661-S. No corner recordation filed for this corner. No reference of bearing trees being established.
- II. I found a 1 in. diam. plastic cap, attached to a 5/8 in. diam. rebar, marked JHN 4661-S.
- Bearing trees established by Ninneman.
- A larch, 13 in. diam., bears N43° E, 34.9 ft. dist., scribing pitched over.  
 A larch, 13 in. diam., bears N64° W, 24.4 ft. dist., scribing pitched over.
- III. Based on survey, I accept the found rebar position for the S 1/16th between sections 19 and 20. In the exact location of the found rebar, I set a 3/4 in. diam., 30 in. long, aluminum rod, 2 ins. above ground, with a 3 1/4 in. diam. aluminum cap marked as shown.



Set a 6 ft. galvanized steel guard post with Land Survey Marker and Property Boundary decals, East, 3.0 ft. Painted red bands around the bearing trees and attached Land Survey Monument and Bearing Tree signs. Buried the rebar horizontally alongside monument. Refer to Certificate of Survey No. 1788 filed this survey.



SKETCH OF CORNER

CERTIFICATION

I, Gary Crismon  
 certify the information shown herein is true and correct.

Gary Crismon  
 Signature Ground Party Chief

I, Alvah F. Hughes  
 certify that this Corner Record correctly represents work performed by me or under my direction in compliance with the "Corner Recordation Act" (70-22-101, et seq., M.C.A.).

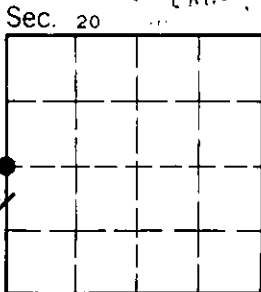
Alvah F. Hughes  
 Signature of Surveyor & Seal

Date: 11/02/90 Reg. No. 7322 LS

Employer: U.S. FOREST SERVICE

Office of Clerk and Recorder, County of Lincoln. This "corner record" was filed for record on Dec 3, 1990 was noted on the cross-index plat and is assigned page No. 4336, in book No. \_\_\_\_\_

Grant H. Siegel by Bill Backhoff  
 County Official



Q-5 31 N 33 W  
 Cross Index No. \_\_\_\_\_ T. \_\_\_\_\_ R. \_\_\_\_\_ P.M.M.

• - corner this sheet