

INSTRUCTIONS

1. Original and/or subsequent record used to evaluate the corner position.
2. Description of evidence found, note discrepancies in the record, state method of establishing lost or obliterated corners.
3. Description of monument and accessories set to perpetuate the corner position.
4. Sketch of corner, show all pertinent data which can best be shown in a sketch example, corner marking, topography ties, position of accessories, etc.
5. Certification must be signed and sealed by Land Surveyor registered in the State of Montana.
6. Fill in Cross Index & Section Diagram at bottom of sheet.

CERTIFIED CORNER RECORDATION

CORNER NO. 5
 Corner H.E.S. 935 Section 14 T. 31N R. 32W P.M.M. Lincoln County

- I. 1919 Original USDA Forest Service Homestead Entry Survey Record: Set a small stone marked with a cross (x) under an iron post, 2 ins. dia. 36 ins. long 24 ins. in the ground, with a brass cap marked 1919 5 HES 935 and a point on the top for the exact corner point, from which,

A cross (x) on a fir tree, 14 ins. dia., bears S7°21'E 107 lks. dist.

A cross (x) on a fir tree 9 ins. dia. bears S62°36'W 102 lks. dist.; each blazed and scribed 5 HES 935 BT.

Raise a mound of stone, 4 ft. base, 2 ft. high, SW of corner.

1970 Corner Recordation Filed Lincoln Co. by 2532S: Found original corner monument firmly set with brass cap marked as shown, from which;
 A 12 ins. fir stump bears S 62½°W 102 lks. with lower edge of blaze visible.

The other BT was destroyed by a road.

I raised a collar of stone 3 ft. base 1½ ft. high around the iron post, from which:

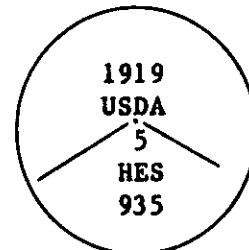
A 13 ins. Ponderosa Pine bears S66½E 7 lks. mkd RM.

A 12 ins. Larch bears N32½W 15 lks. mkd RM

1982 Corner Recordation Filed Lincoln Co. by 3325S: Found Iron pipe with brass cap marked 5 HES 935 1919.

14 inch. larch bears N32°W 10.0 ft. dist. with healed blaze.

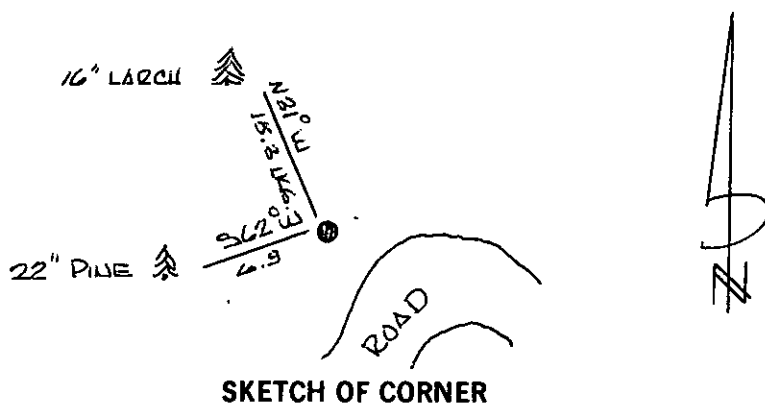
- II. I found a brass cap on 2 ins. dia. iron post 16 ins. out of ground marked:



A pine 22 ins. diam. bears S62°W 6.9 lks. scribe overgrown.

A larch 16 ins. diam. bears N31°W 15.3 lks. scribe overgrown

- III. I set a 6 ft. galvanized steel guard post with a "Survey Marker and Property Boundary" decal attached, N 81°47'W 2.7 ft. from corner. I painted red bands around the bearing trees, attached BT and Land Survey Monument signs.



SKETCH OF CORNER

CERTIFICATION

I, Gary C. Crismon
 certify the information shown herein is true and correct.

Signature of Ground Party Clerk

I, Thomas C. Thomas C.
 certify that this Corner Record correctly represents work performed by me or under my direction in compliance with the "Corner Recordation Act" (MCA 82-201, et seq.)

Signature of Surveyor & Seal

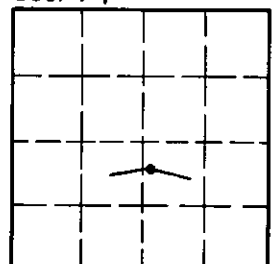
Date: 6-86 Reg. No. 5612

Employer: U.S.D.A. FOREST SERVICE

Office of Clerk and Recorder, County of Lincoln. This "corner record" was filed for record on June 10, 1986 was noted on the cross-index plat and is assigned page No. 3260, in book No. _____

Grant BF Seal by Bill Buckoff
 County Official

Sec. 14



Cross Index No. _____ T. _____ R. _____ PMM

• - corner this sheet

INSTRUCTIONS TO SURVEYORS FOR COMPLETION OF CERTIFIED CORNER RECORDATION FORMS

I. ORIGINAL AND/OR SUBSEQUENT RECORD:

This item should describe or quote those portions of the original or subsequent record which were used in evaluating the corner position. The original record will usually be the General Land Office field notes. Subsequent record can come from several sources: Previously filed corner records, maps and plats, private and public records, etc. Some of the subsequent record, even though not in the public record, but known to have validity by the surveyor, may be quoted and appropriately noted.

The record data helps support the reestablished corner position because it clearly shows what history the surveyor based his corner position on. In some cases, however, the record may be unknown or not pertinent. A statement to that effect should appear on the corner record.

II. DESCRIPTION OF EVIDENCE FOUND OR METHOD OF LOCATING CORNER POSITION:

This item will describe the original or subsequent record evidence found. If portions of the found evidence cannot be reconciled with the record, then the disregarded record should be noted, and, if possible, an opinion as to its cause narrated.

If no physical evidence of the original or subsequent monuments and accessories can be found, then the method used to reestablish the lost or obliterated corner (single proportion, fence intersection, parol evidence, terrain calls, centerline of road, etc.) **shall** be indicated.

III. DESCRIPTION OF MONUMENTS AND ACCESSORIES SET TO PERPETUATE THE CORNER POSITION:

This item should list all details about the corner and its location which will help exclusively identify the corner position; including size and type of monument, how marked if not shown in sketch, and distinguishing topographic calls which help locate the corner. In many cases, instructions on how to find the corner should be included.

References or ties to other corners are optional and may be drawn on the face or back of the corner record form, or references to Certificate of Survey may be made. Separate drawings may be attached to the corner form.

If state plane coordinate values for the corner position are shown, then the control upon which they are based should be indicated.

IV. SKETCH OF CORNER:

This item will usually show how a found or set corner is marked and may also show topography or accessory monuments found or set and their relation to the corner. There is no stipulated format; the sketch could be transcribed field note entries.

V. CERTIFICATION:

The name and signature of the ground party chief is optional.

The Surveyor who performed or directed the field work which is depicted on the "Certified Corner Record" shall sign and affix his seal in the Certification.

The employer blank is optional but useful in tracking down original field note data or adjacent record if, in the future, questions arise about the corner.

VI.

The Cross Index at the bottom of the page should be completed by the Surveyor. Only the single Township Index where the corner is filed shall be completed.

The lower righthand corner is a corner location diagram and should have the pertinent section filled in at the top and a closed circle indicating the appropriate corner position in the section filled in. This is intended to be an aid in searching the "Record" once it has been filed.