

CERTIFIED LAND CORNER RECORDATION

SEC. 28 TWP. 31 N., R. 33 W., M.P.M.

DESCRIPTION OF CORNER EVIDENCE FOUND, AND ORIGINAL RECORD (IF KNOWN)

- 1. Brass cap and 2 bearing trees by others.
- 2. Not previously set.
- 3. Brass cap and bearing trees by B.L.M.
- 4. Not previously set.
- 5. Steel pin set by others.

NOTE: Numbers refer to sketch on back.

DESCRIPTION OF MONUMENT AND ACCESSORIES ESTABLISHED TO PERPETUATE THE ORIGINAL LOCATION OF THIS CORNER:

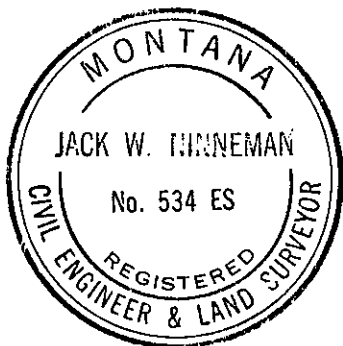
Date of work: Jan 4, 1972

- 1. Brass cap and 2 bearing trees by others.
- 2. Set a brass cap from which a 10" pine bears N 82° W 9.3 Ft. and a 10" pine bears S 28° E 22.1 Ft. Both trees are scribed S 1/16 B.T. and posted.
- 3. Brass cap and bearing trees by B.L.M.
- 4. Set a brass cap, no trees available.
- 5. Steel pin set by others.

SKETCH, WITH COURSE AND DISTANCE TO ADJACENT CORNERS IF DETERMINED IN THIS SURVEY. (MAY SKETCH OR PASTE REPRODUCTION ON REVERSE SIDE.)

SEE REVERSE

Surveyor's Seal



I, Jack H. Ninneman
certify that the information shown herein is true and correct.

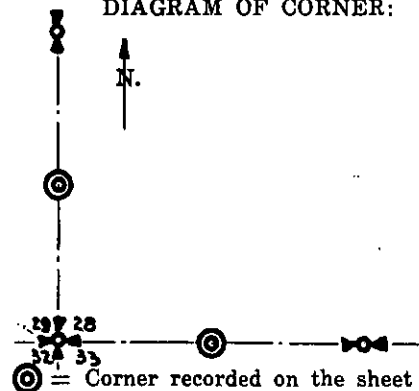
Jack H. Ninneman
Signature of Ground Party Chief

I, Jack W. Ninneman
certify that I have carefully performed or reviewed the work done on the diagrammed corner as reported on this recordation form and approve the same.

Jack W. Ninneman
Signature of Surveyor

Mont. 534 ES
Registration Number

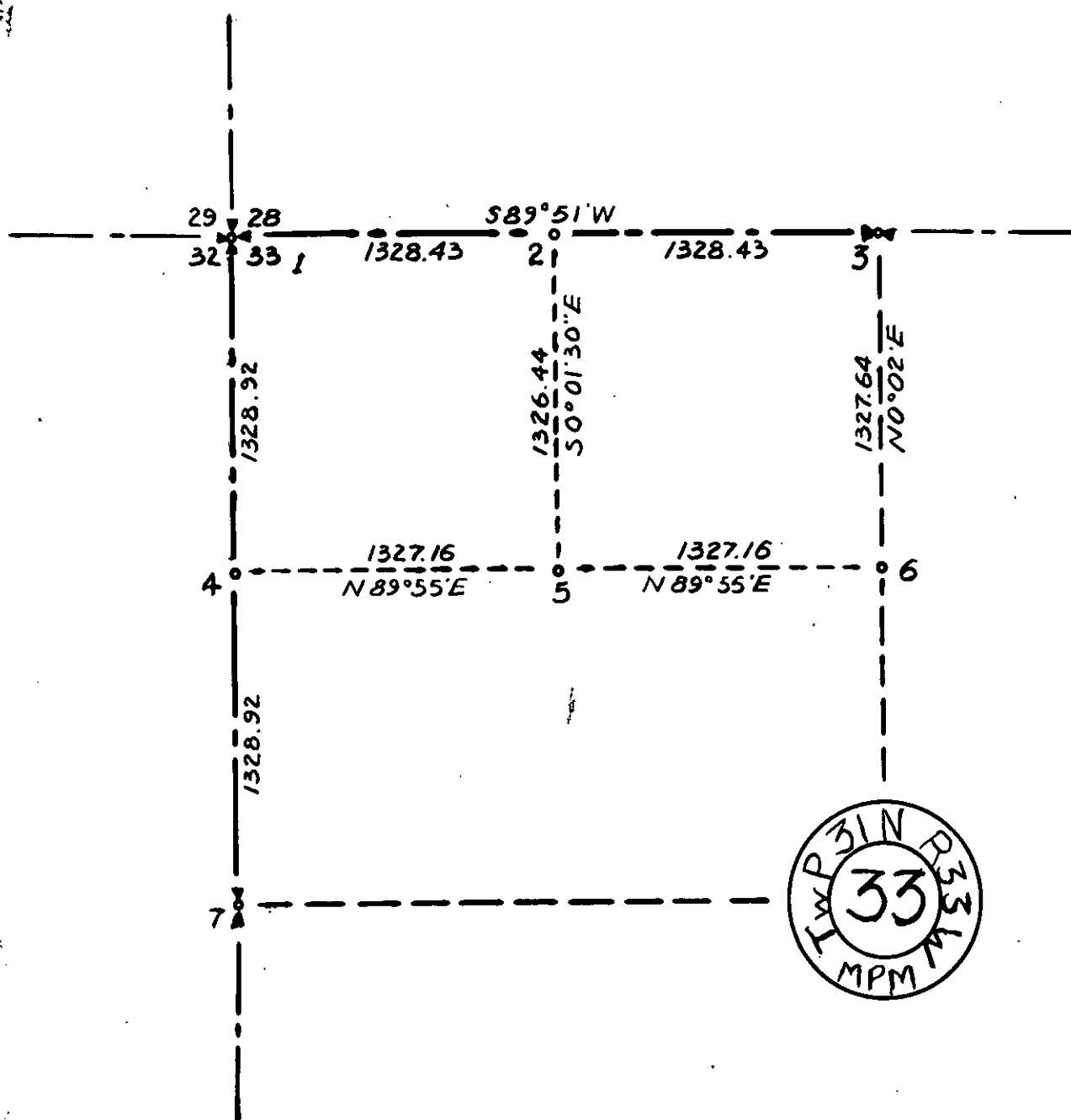
DIAGRAM OF CORNER:



Office of Clerk and Recorder, County of Lincoln

This "corner record" was filed for record on the 14th day of January 1972, was noted on the cross-index plat and is assigned page No. 261, in book No. 1

Glenn L. Daugherty
County Official
Deputy



B 216 & 229