

# CERTIFIED LAND CORNER RECORDATION

SECTION 33 TWP. 31 N., R. 33 W., M.P.M.

## DESCRIPTION OF CORNER EVIDENCE FOUND, AND ORIGINAL RECORD (IF KNOWN)

1. Brass cap and bearing trees by B.L.M.
2. Not previously set.
3. Steel pin by others.
4. Not previously set.
5. Not previously set.
6. Not previously set.

NOTE: Numbers refer to sketch on back.

## DESCRIPTION OF MONUMENT AND ACCESSORIES ESTABLISHED TO PERPETUATE THE ORIGINAL LOCATION OF THIS CORNER:

Date of work: Jan 1972

1. Brass cap and bearing trees by B.L.M.
2. Set a brass cap, no trees available.
3. Steel pin on shore of Milnor lake by others. Set location poster on power pole 15 Ft. South of corner.
4. Set a "Lifetime" plastic monument from which a 12" fir bears N 5° W 8.7 Ft. A 10" larch bears S 35° E 20.9 Ft. Both are scribed N 1/16 and posted.
5. Set a brass cap from which a 12" hemlock bears N 10° 30' E 9.6 Ft. A 10" pine bears S 49° 30' E 41.2 Ft. Both are scribed N 1/16 W B.T. and posted.
6. Set a brass cap from which a 18" hemlock bears N 13° 35' E 30.2 Ft. A 12" pine bears S 45° 30' W 7 Ft. Both are scribed C 1/16 N B.T. and posted.
7. Braced post scribed 1/4 with 2 original bearing tree stumps. This corner set in 1960.

SKETCH, WITH COURSE AND DISTANCE TO ADJACENT CORNERS IF DETERMINED IN THIS SURVEY. (MAY SKETCH OR PASTE REPRODUCTION ON REVERSE SIDE.)

SEE REVERSE

Surveyor's Seal

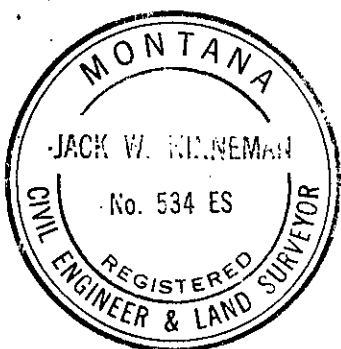
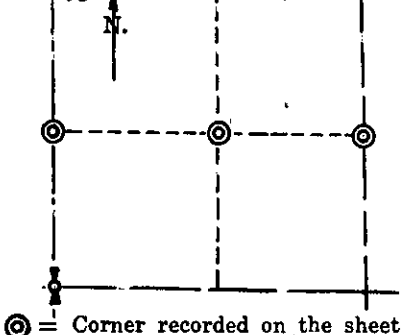
I, Jack H. Ninneman  
certify that the information shown herein is true and correct.

*Jack H. Ninneman*  
Signature of Ground Party Chief

I, Jack W. Ninneman  
certify that I have carefully performed or reviewed the work done on the diagrammed corner as reported on this recordation form and approve the same.

*Jack W. Ninneman*  
Signature of Surveyor

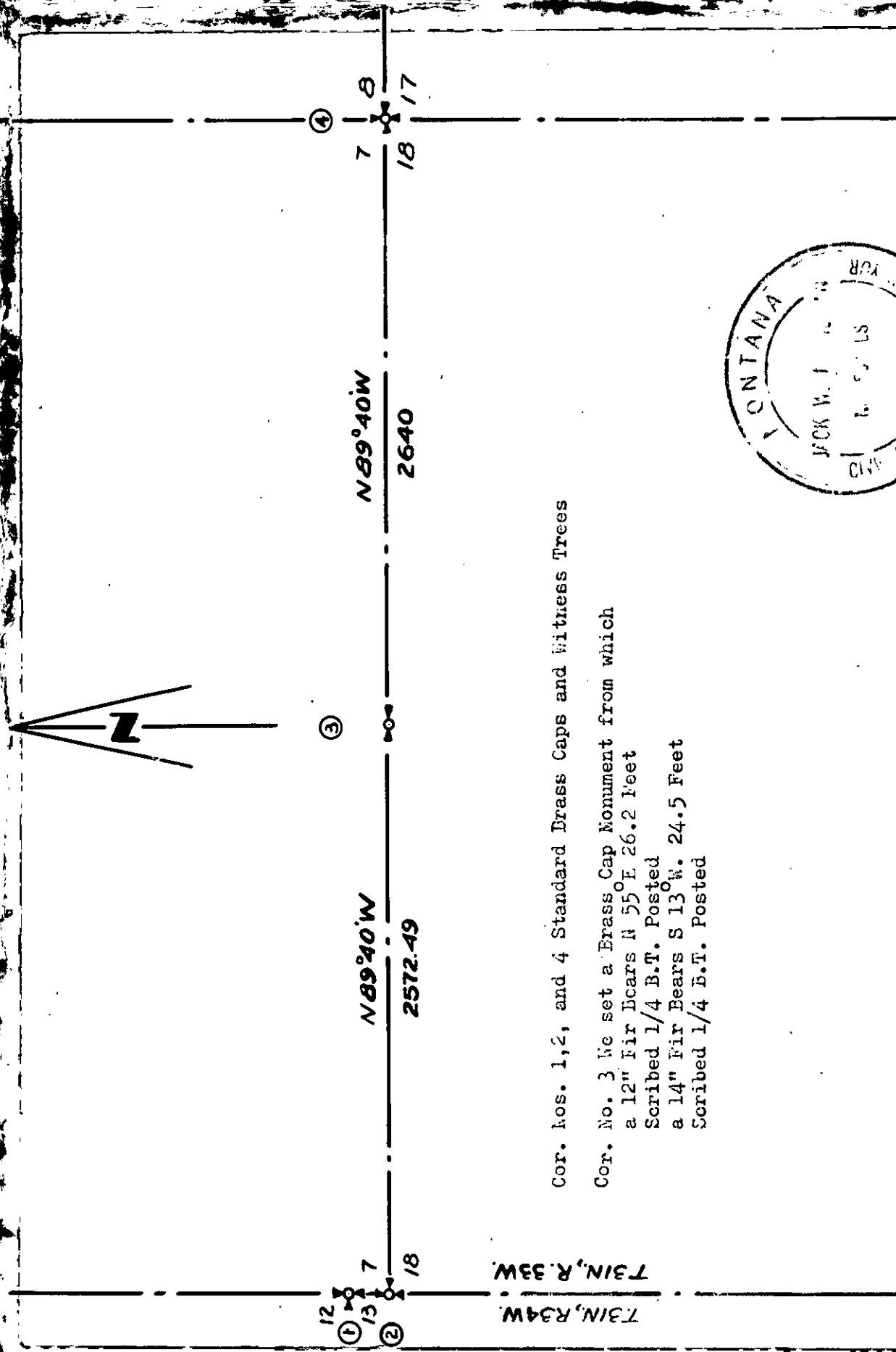
29 28  
32 33  
DIAGRAM OF CORNER:



Mont. 534 ES  
Registration Number

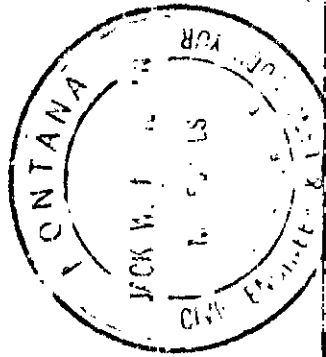
Office of Clerk and Recorder, County of Lincoln  
This "corner record" was filed for record on the 14<sup>th</sup> day of January 1972, was noted on the cross-index plat and is assigned page No. 260, in book No. 1

*Bleasner L. Vaughan*  
County Official  
*Deputy*  
Cross Index No. 11 T. 31 R. 33 Mer.



Cor. nos. 1, 2, and 4 Standard Brass Caps and Witness Trees

Cor. No. 3 We set a Brass Cap Monument from which  
 a 12" Fir Bears N 55° E 26.2 Feet  
 Scriber 1/4 B.T. Posted  
 a 14" Fir Bears S 13° W. 24.5 Feet  
 Scriber 1/4 B.T. Posted



Ninneman Engineering, Troy, Montana.