

CERTIFIED LAND CORNER RECORDATION

N 1/4 Corner Section 18 Twp. 31N., R. 33 W., M.P.M.

DESCRIPTION OF CORNER EVIDENCE FOUND, AND ORIGINAL RECORD (IF KNOWN)

Cor. Nos. 1, 2, & 4 Standard Brass Caps & Witness Trees By B.L.M.

DESCRIPTION OF MONUMENT AND ACCESSORIES ESTABLISHED TO PERPETUATE THE ORIGINAL LOCATION OF THIS CORNER:

Date of work: Feb. 2, 1971

SEE REVERSE SIDE

SKETCH, WITH COURSE AND DISTANCE TO ADJACENT CORNERS IF DETERMINED IN THIS SURVEY: (MAY SKETCH OR PASTE REPRODUCTION ON REVERSE SIDE.)

SEE REVERSE SIDE

Surveyor's Seal

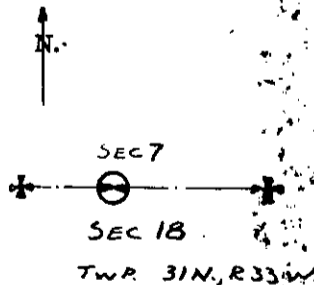
I, Jack H. Ninneman certify that the information shown herein is true and correct.

Signature of Ground Party Chief

I, Jack W. Ninneman certify that I have carefully performed or reviewed the work done on the diagrammed corner as reported on this recordation form and approve the same.

Signature of Surveyor

DIAGRAM OF CORNER:



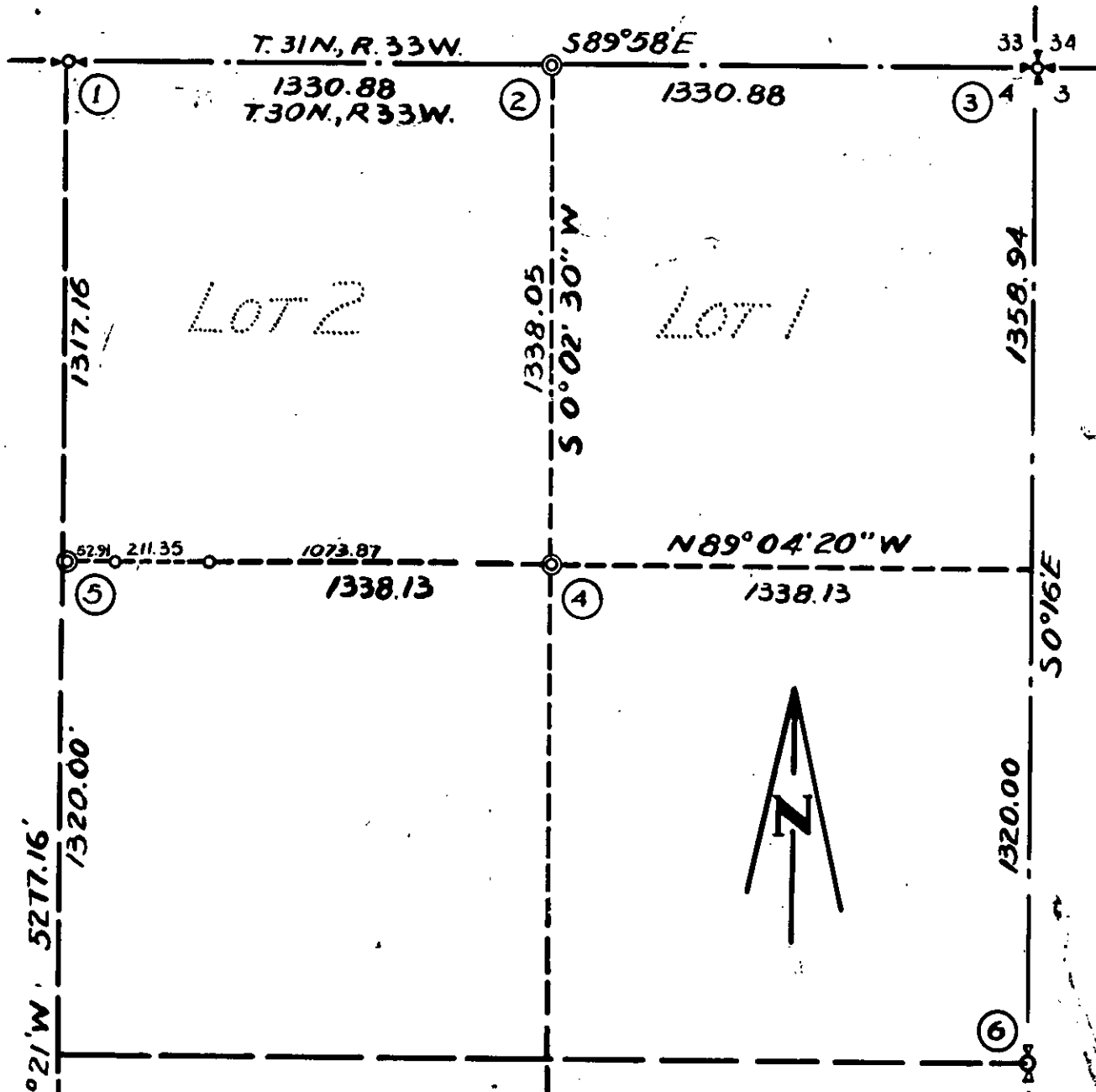
⊖ = Corner recorded on the sheet

534 E.S. Registration Number

Office of Clerk and Recorder, County of Lincoln

This "corner record" was filed for record on the 18th day of March 1971, was noted on the cross-index plat and is assigned page No. 212, in book No. 1

ELEANOR L. VAUGHN, County Official



Cors. No. 1, 3 and 7 Standard Brass Caps by B.L.M.

Cor. No. 2 We set a "Lifetime" Plastic Monument from which
 A 12" Hemlock Bears N 88°19'W 44.9 Ft.
 A 12" Hemlock Bears S 65°53'E 28.1 Ft. Both Scribed
 E 1/16 and Posted

Cor. No. 4 We set a "Lifetime" Plastic Monument from which
 A 12" Pine Bears N 66°44'W 23.4 Ft.
 A 36" White Fir Bears N 24°49'E 22.6 Ft.
 Both Scribed N 1/16 E and Posted

Cor. No. 5 We set a Bolt Spike in Pavement of State Highway No. 202
 From which 2 Steel Pine Bear S 89°04'20"E 52.91 Ft. and 264.26 Ft.
 Respectively.

⑦ Set a Location Poster on Fence Posted 47.6 Ft. West

Cor. No. 6. Searched for but not found.