

CERTIFIED LAND CORNER RECORDATION

ACCESSORY CORNERS IN SEC. 4 TWP. 31 N., R. 33 W., M.P.M.

DESCRIPTION OF CORNER EVIDENCE FOUND, AND ORIGINAL RECORD (IF KNOWN)

North 1/4 Corner, South 1/4 Corner, and Northeast Corner
of Section 4 - Brass Caps set by B.L.M.

B.L.M. reported re east 1/4 Corner "Searched for but not found."

We made further unsuccessful search.

DESCRIPTION OF MONUMENT AND ACCESSORIES ESTABLISHED
TO PERPETUATE THE ORIGINAL LOCATION OF THIS CORNER:

Date of work: Oct. 15, 1970

SEE OTHER SIDE

SKETCH, WITH COURSE AND DISTANCE TO ADJACENT CORNERS IF DETERMINED IN THIS SURVEY.
(MAY SKETCH OR PASTE REPRODUCTION ON REVERSE SIDE.)

SEE OTHER SIDE

Surveyor's Seal

I, Jack H. Ninneman
certify that the information shown herein is true and
correct.

Jack H. Ninneman
Signature of Ground Party Chief

Jack W. Ninneman
I, _____
certify that I have carefully performed or reviewed the
work done on the diagrammed corner as reported on this
recording form and approve the same.

Jack W. Ninneman
Signature of Surveyor

Montana License No. 534 E.S.

Registration Number

DIAGRAM OF CORNER:

N.
Corners in
Sec. 4 See
Other side

= Corner recorded on the sheet

Office of Clerk and Recorder, County of Lincoln

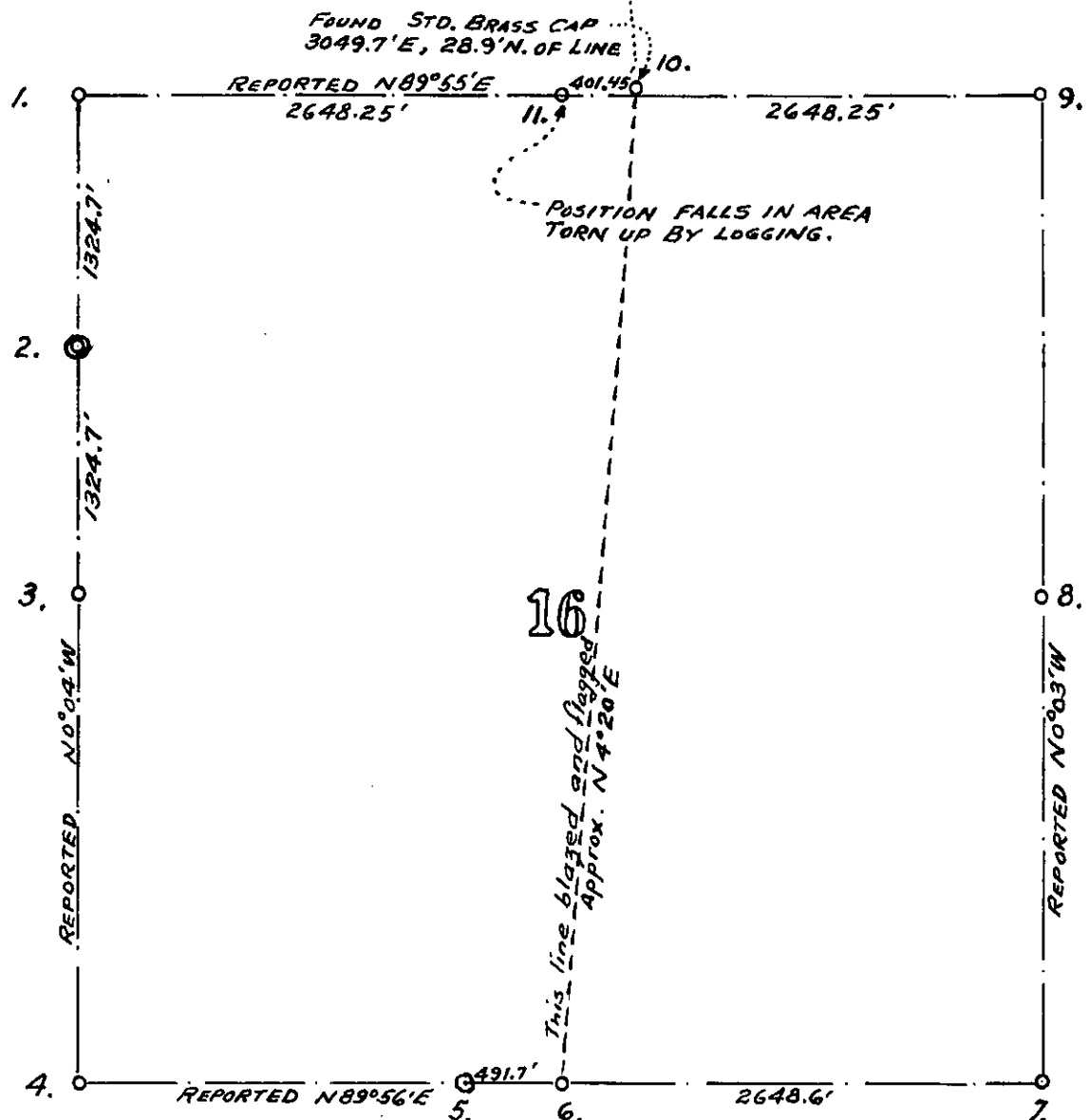
This "corner record" was filed for record on the 8th day of February 1971, was noted on the cross-index plat and is
assigned page No. 211, in book No. 1

ELEANOR L. VAUGHN, By:

County Official

Deputy

Section 16 Twp. 31 N., R. 33 W., M.P.M.



1. Standard brass cap with witnesses.
2. Set a 3/4" Pipe 18" long in a stone mound (on line at mid-point between NW Corner and position accepted as location of West 1/4 Corner) from which a 24" larch bears S 37° E. Scribed 1/16 and posted with bearing tree location sign.
3. Corner not found but position confirmed by measurement and by illegible remains of bearing trees in reported locations.
4. Standard brass cap.
5. Stump of one bearing tree found. Corner not reset.
6. Bearing tree remains found and part of original post in position. = See below. *
7. Standard brass cap.
8. Not searched for.
9. One bearing tree live, standing. One bearing tree down, legible but slid down hill from original position. We set a steel rod at position reported from live bearing tree.
10. FOUND STANDARD BRASS CAP. ADJUSTED TRANSIT TRAVERSE OF NORTH LINE OF SUBJECT SECTION POSITIONS THIS MONUMENT 401.45 FEET EAST AND 28.9 FEET NORTH OF MID-POINT BETWEEN CORNERS.
11. Corner not found - Position falls in area torn up by logging operations. No bearing trees reported for original corner.

* Set a squared cedar post, marked 1/4 on east face from which,
 An 18" Fir bears S 1° E 18 feet.
 A 12W Fir bears N 2 1/2° E 3 1/2 feet. Both marked 1/4.