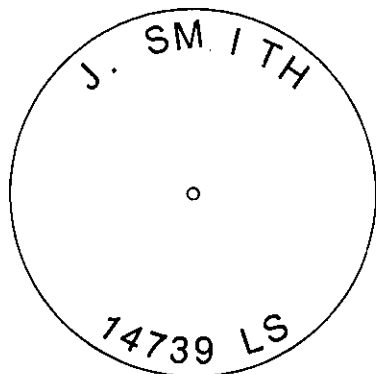
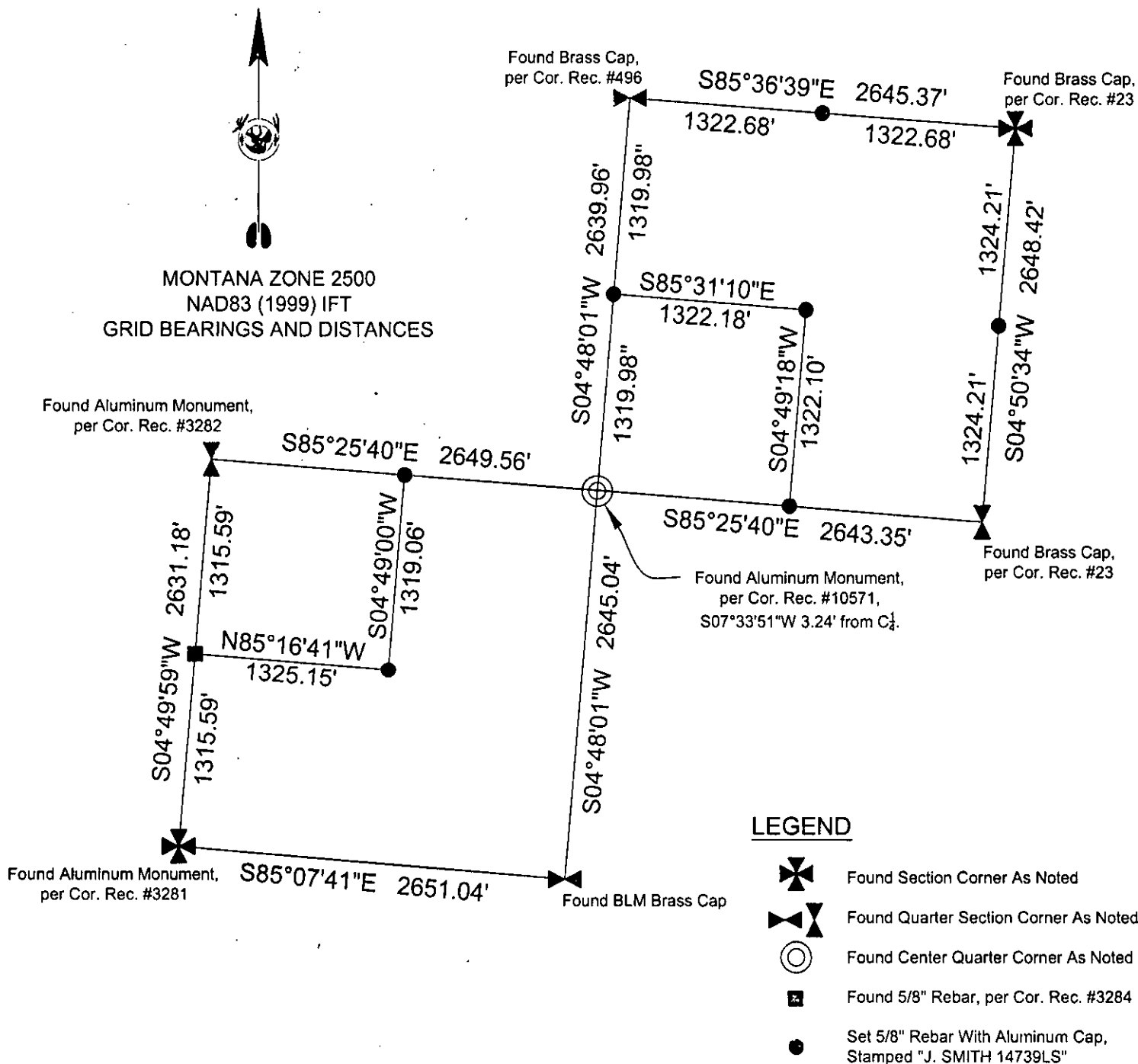


CERTIFIED CORNER RECORDATION

Corner E 1/16 T. 31 N R. 33 W P.M.M. LINCOLN County



SKETCH OF CORNER

CERTIFICATION

I, \_\_\_\_\_  
certify the information shown herein is true and correct.

Signature of \_\_\_\_\_  
JASON T. SMITH  
I, \_\_\_\_\_  
certify that this Corner Record correctly represents work performed by me or under my direction in compliance with the "Corner Recordation Act" (MCA, sec. 14-10-100).

Signature of Surveyor & Seal  
Date: 5/22/08 Reg. No. 14739LS

Employer: Robert Peccia & Associates

Office of Clerk and Recorder, County of LINCOLN. This "corner

record" was filed 211717 BOOK: CCR CC&R'S PAGE: 11197 Pages: 1

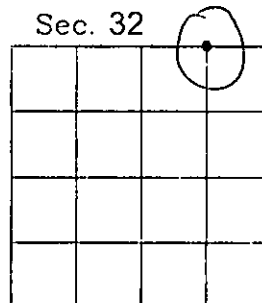
was noted on the STATE OF MONTANA LINCOLN COUNTY RECORDED: 05/29/2008 10:20 KOI: CC&R'S —, in

book No. TAMMY D. LAUER CLERK AND RECORDER BY: Julie Blomdahl, Deputy —

FEE: \$0.00  
TO: ROBERT PECCIA & ASS'S

Cross Index No. V-8 T. 31 N R. 33 W P.M.M.

Adopted July 1, 1981, Montana Board of Professional Engineers & Land Surveyors



• corner this sheet