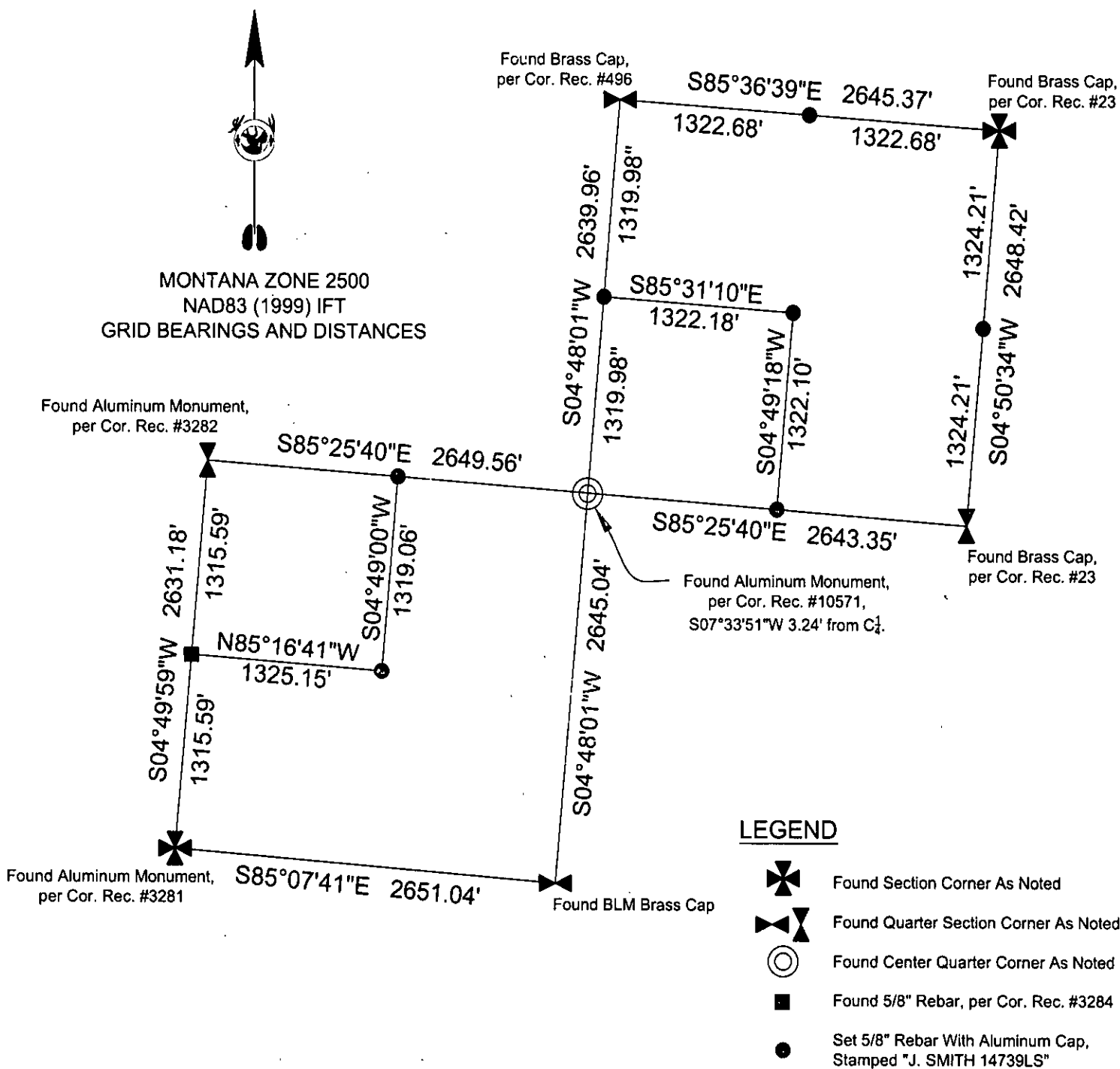


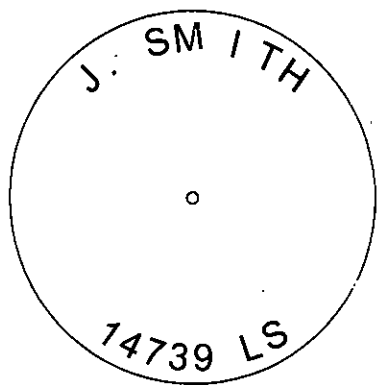
CERTIFIED CORNER RECORDATION

Corner N 1/16 T. 31 N R. 33 W P.M.M. LINCOLN County



LEGEND

- Found Section Corner As Noted
- Found Quarter Section Corner As Noted
- Found Center Quarter Corner As Noted
- Found 5/8" Rebar, per Cor. Rec. #3284
- Set 5/8" Rebar With Aluminum Cap, Stamped "J. SMITH 14739LS"



SKETCH OF CORNER

CERTIFICATION

I, _____, certify the information shown herein is true and correct.

Signature of Surveyor
Jason M. Smith
 I, _____, certify that this Corner Record correctly represents work performed by me or under my direction in compliance with the "Corner Recordation Act" (70-2-101 et seq., M.C.L.)

Signature of Employer & Seal
 Date: 05-22-08 Reg. No. 14739 LS
 Employer: Robert Peccia & Associates

Office of Clerk and Recorder, County of LINCOLN. This "corner

record" was filed 211716 BOOK: CCR CC&R'S PAGE: 11196 Pages: 1

was noted on the STATE OF MONTANA LINCOLN COUNTY RECORDED: 05/29/2008 10:19 KOI: CCR'S

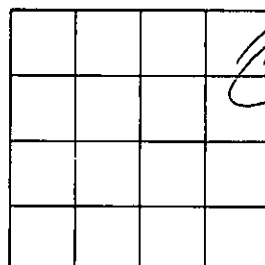
book No. _____ BY TAMMY D. LAUER CLERK AND RECORDER

FEE: \$0.00 TO: ROBERT PECCIA & ASS'S.

Cross Index No. W-9 T. 31 N R. 33 W P.M.M.

Adopted July 1, 1981, Montana Board of Professional Engineers & Land Surveyors

Sec. 32



• corner this sheet