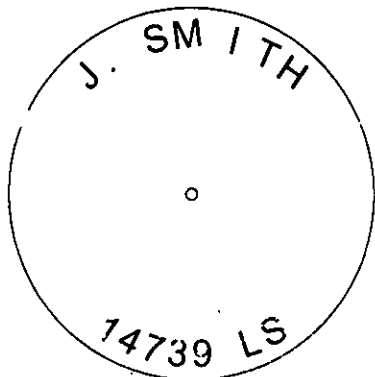
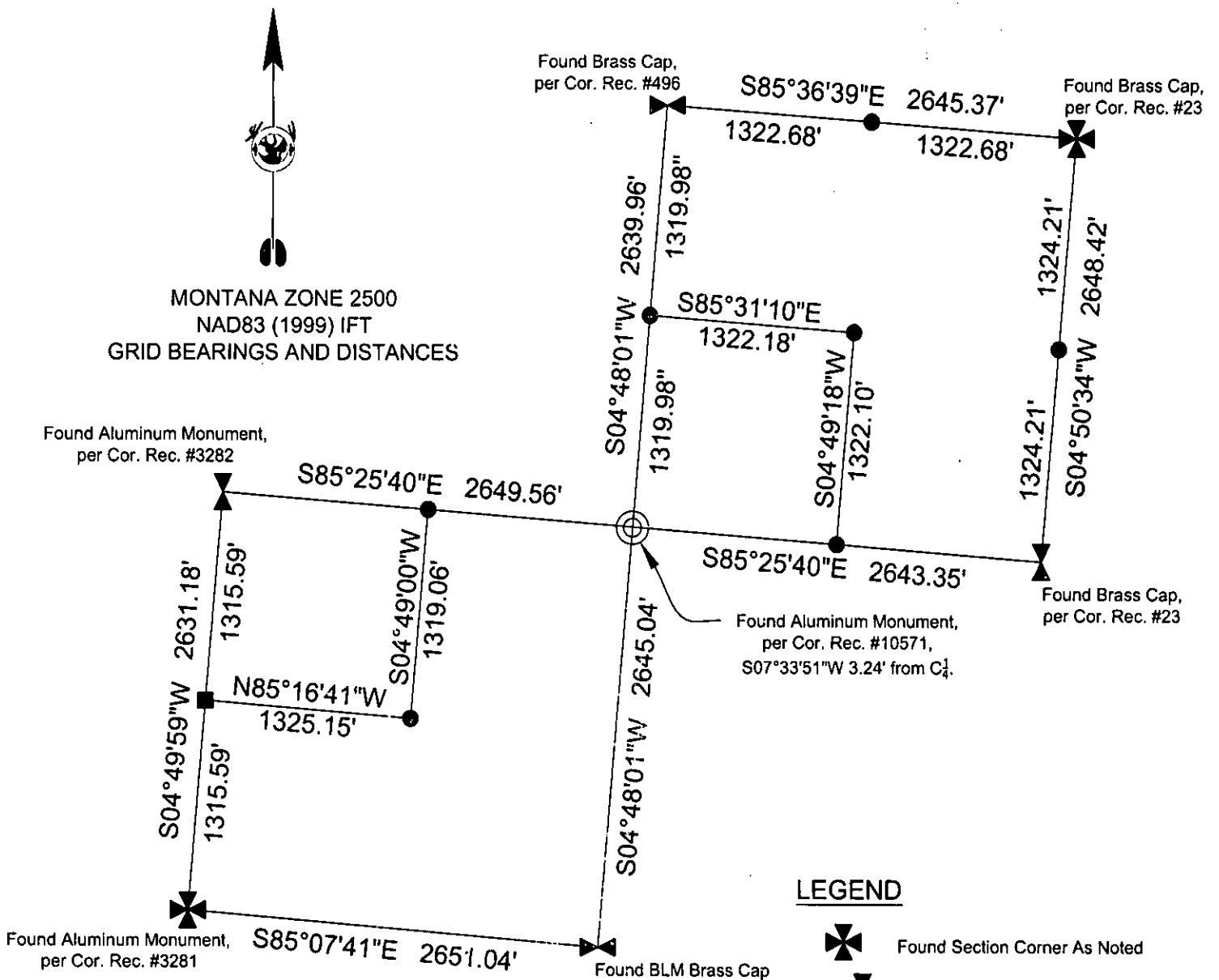


CERTIFIED CORNER RECORDATION

Corner SW 1/16 T. 31 N R. 33 W P.M.M. LINCOLN County



SKETCH OF CORNER

CERTIFICATION

I, Jason M. Smith, certify the information shown herein is true and correct.

Signature Ground, Party Jason M. Smith
I, Jason M. Smith, certify that this corner recordation correctly represents work performed by me or under my direction in compliance with the "Corner Recordation Act" (70-22-101 et seq., M.C.A.)

Signature of Surveyor & Seal
Date: 5-22-08 Recd. No. 14739LS
Employer: Robert Peccia & Associates

Office of Clerk and Recorder, County of LINCOLN. This "corner

record" was filed for 211714 BOOK: CCR CC&R'S PAGE: 11194 Pages: 1

was noted on the c STATE OF MONTANA LINCOLN COUNTY in

book No. TAMMY D. LAUER CLERK AND RECORDER

FEE: \$0.00

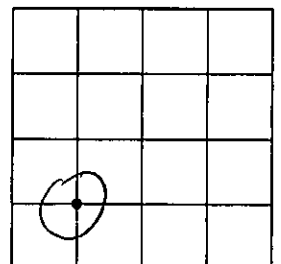
BY: Lee Blomdahl, Deputy

TO: ROBERT PECCIA & ASS'S

Cross Index No. Y-6 T. 31 N R. 33 W P.M.M.

Adopted July 1, 1981, Montana Board of Professional Engineers & Land Surveyors

Sec. 32



• corner this sheet