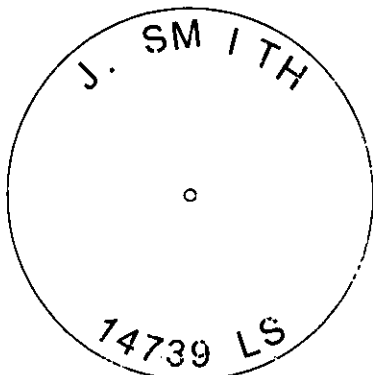
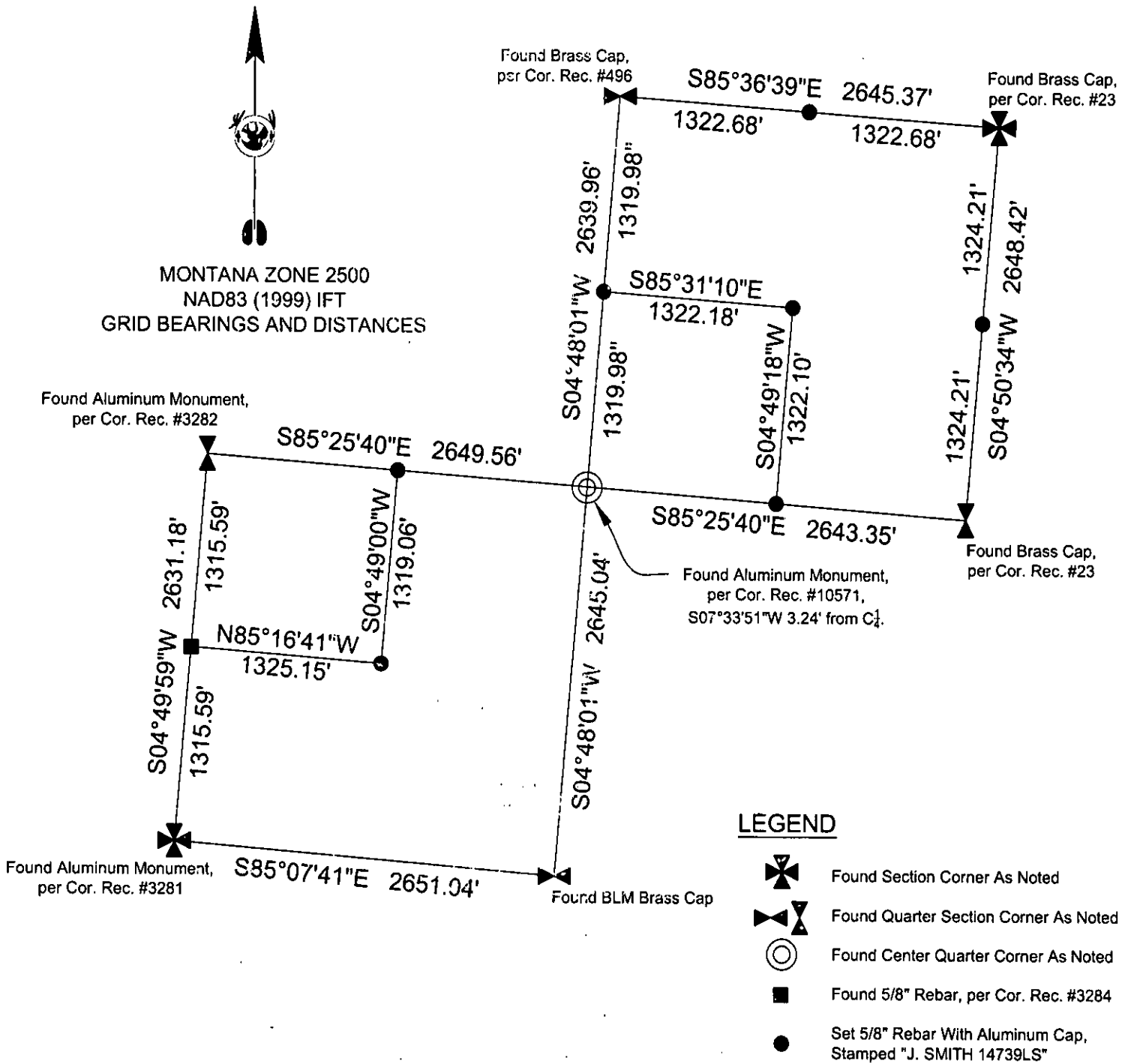


CERTIFIED CORNER RECORDATION

Corner C-N 1/16 T. 31 N R. 33 W P.M.M. LINCOLN County

MONTANA ZONE 2500
NAD83 (1999) IFT
GRID BEARINGS AND DISTANCES



SKETCH OF CORNER

CERTIFICATION

I, _____, certify the information shown herein is true and correct.

Signature Ground Party Object

Jason M. Smith

I, _____, certify that this Corner Record correctly represents work performed by me or under my direction in compliance with the "Corner Recordation Act" (70-2810, sec. 1, M.C.A.)

Signature of Surveyor & Seal

Date: 5-22-08

Employer: Robert Peccia & Associates

Office of Clerk and Recorder 211713 BOOK: CCR CC&R'S PAGE: 11193 Pages: 1

record" was filed for STATE OF MONTANA LINCOLN COUNTY

was noted on the cross RECORDED: 05/29/2008 10:17 KOI: CC&R'S

book No. TAMMY D. LAUER CLERK AND RECORDER

FEE: \$0.00 BY: Bill Blomdahl, Deputy

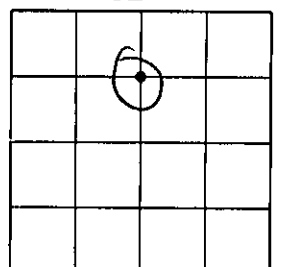
TO: ROBERT PECCIA & ASS'S

County Official

Cross Index No. W-7 T. 31 N R. 33 W P.M.M.

Adopted July 1, 1981, Montana Board of Professional Engineers & Land Surveyors

Sec. 32



• corner this sheet