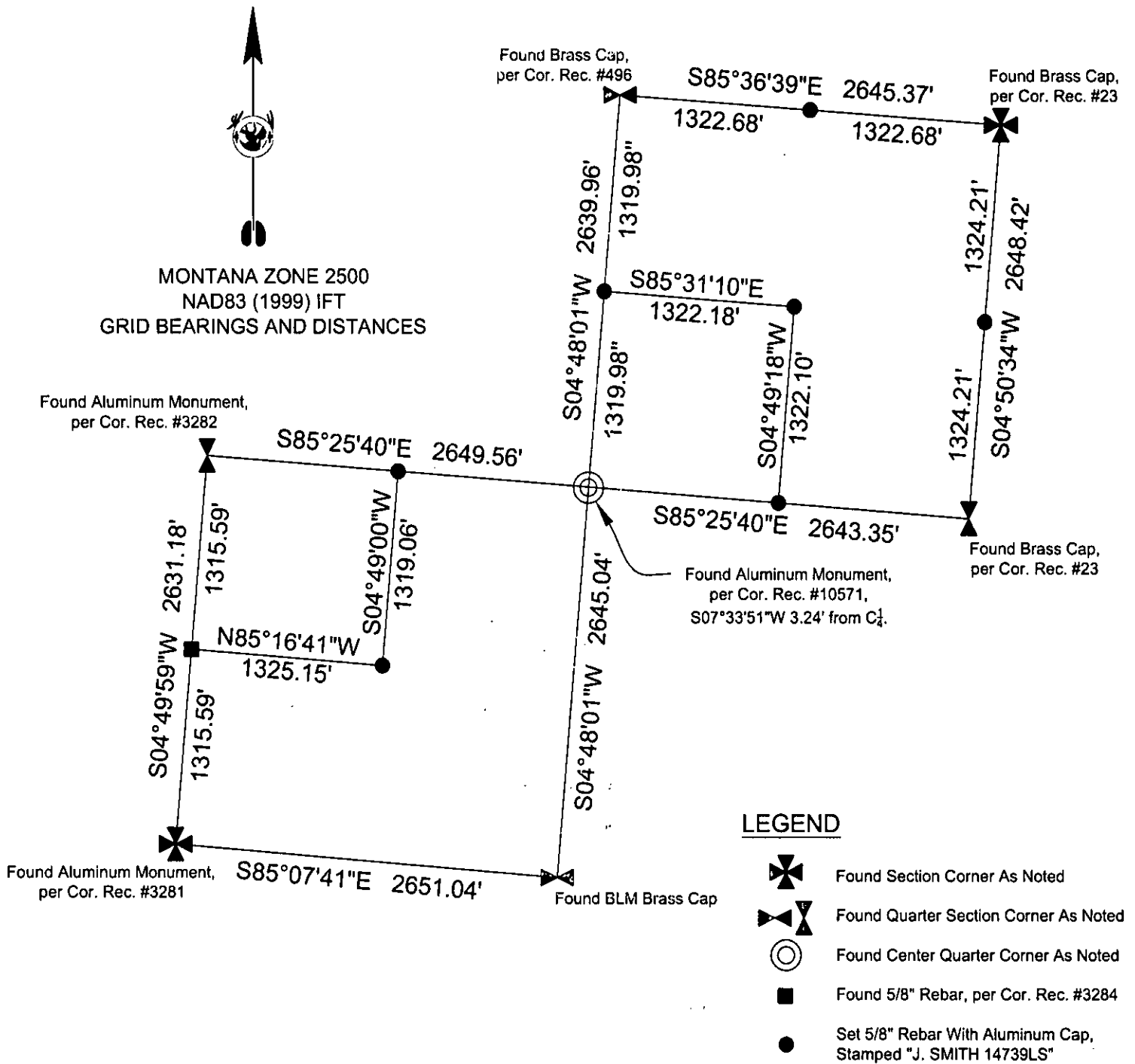


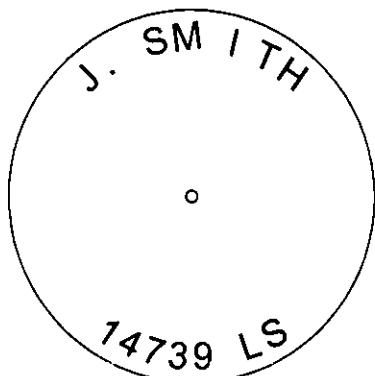
CERTIFIED CORNER RECORDATION

Corner C-E 1/16 T. 31 N R. 33 W P.M.M. LINCOLN County



LEGEND

- Found Section Corner As Noted
- Found Quarter Section Corner As Noted
- Found Center Quarter Corner As Noted
- Found 5/8\" Rebar, per Cor. Rec. #3284
- Set 5/8\" Rebar With Aluminum Cap, Stamped \"J. SMITH 14739LS\"



SKETCH OF CORNER

CERTIFICATION

I, Jason M. Smith, certify the information shown herein is true and correct.

Signature of Surveyor, per Cor. Rec. #14739 LS
Jason M. Smith
 I, Robert Peccia & Associates, certify that this Corner Record correctly represents work performed by me or under my direct supervision in compliance with the \"Corner Recordation Act\" (70-28, 1909, 1st seq., M.C.A.)

Signature of Surveyor & Seal
Robert Peccia & Associates
 Date: 5-22-08 Reg. No. 14739 LS
 Employer: Robert Peccia & Associates

Office of Clerk and Recorder, County of LINCOLN. This \"corner

record\" was filed for record on

211712 BOOK: CCR CC&R'S PAGE: 11192 Pages: 1

was noted on the cross-index plat

STATE OF MONTANA LINCOLN COUNTY

book No. _____

RECORDED: 05/29/2008 10:16 KOI: CC&R'S

TAMMY D. LAUER CLERK AND RECORDER

FEE: \$0.00

BY: Robert Peccia

TO: ROBERT PECCIA & ASS'S.

Cross Index No. X-8 T. 31 N R. 33 W P.M.M.

Adopted July 1, 1981, Montana Board of Professional Engineers & Land Surveyors

Sec. 32

• corner this sheet