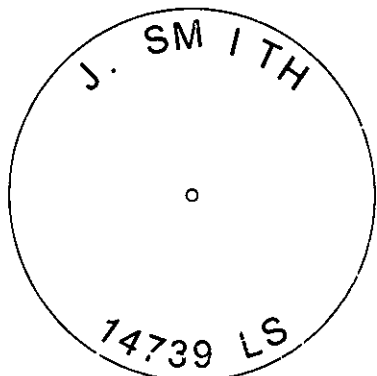
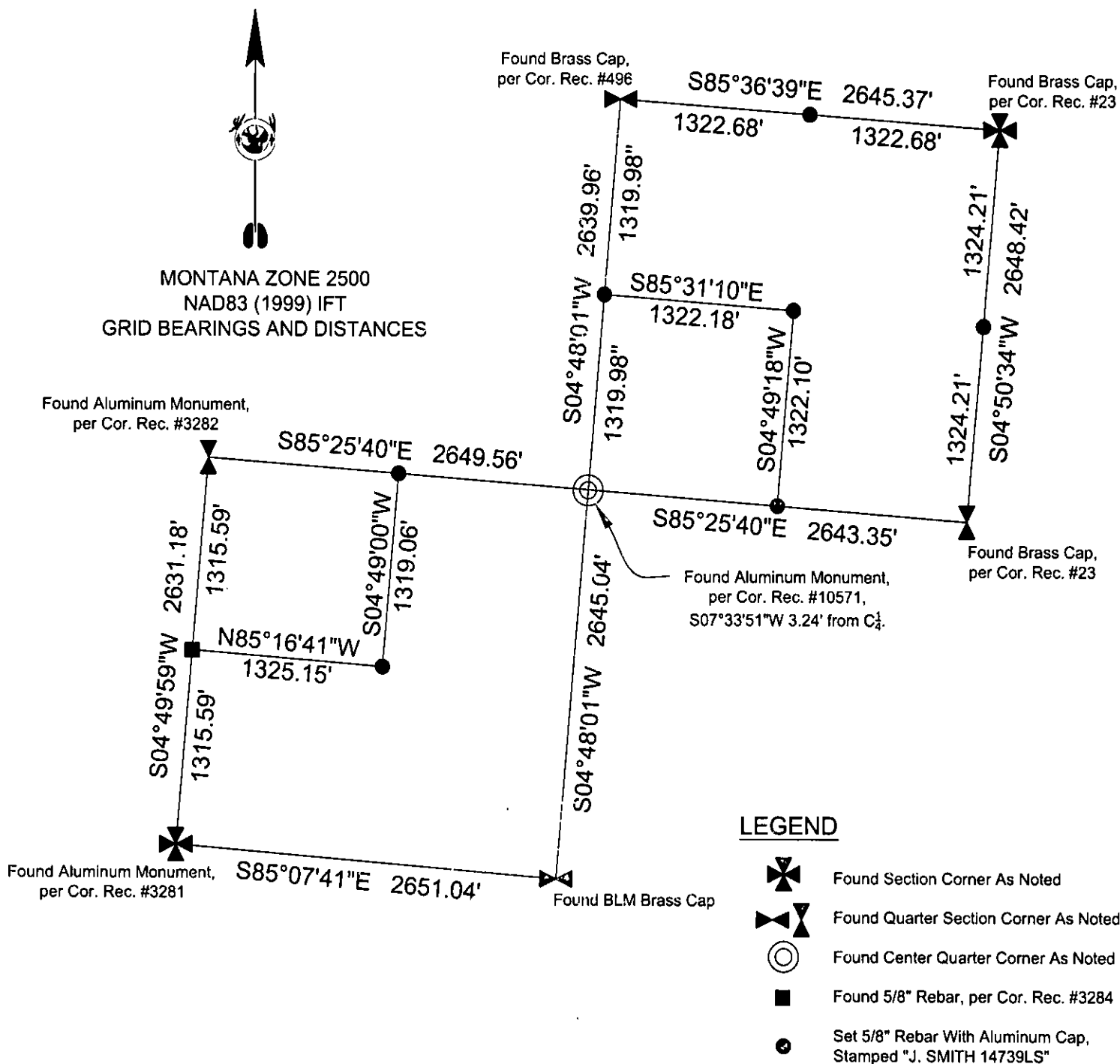


CERTIFIED CORNER RECORDATION

Corner C-W 1/16 T. 31 N R. 33 W P.M.M. LINCOLN County



SKETCH OF CORNER

CERTIFICATION

I, \_\_\_\_\_  
certify the information shown herein is true and correct.

Signature Ground Party Caller  
Jason M. Smith  
I, \_\_\_\_\_  
certify that this Corner Record represents work performed by me or under my direction in compliance with the "Corner Recordation Act" 70-22-200, M.C.A.  
Signature of Surveyor  
Robert Peccia  
Date: 5-22-08 REG. NO. 14739 LS  
Employer: Robert Peccia & Associates

Office of Clerk and Recorder, County of LINCOLN . This "corner

record" was filed for record o

211711 BOOK: CCR CC&R'S PAGE: 11191 Pages: 1

Sec. 32

was noted on the cross-index

STATE OF MONTANA LINCOLN COUNTY

RECORDED: 05/29/2008 10:15 KOI: CC&R'S

TAMMY D. LAUER CLERK AND RECORDER

book No. \_\_\_\_\_

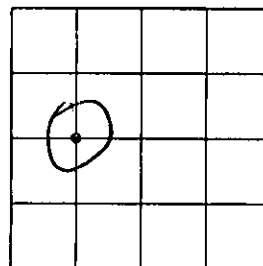
FEE: \$0.00

BY: Robert Peccia

TO: ROBERT PECCIA & ASS'S.

Cross Index No. X-6 T. 31 N R. 33 W P.M.M.

Adopted July 1, 1981, Montana Board of Professional Engineers & Land Surveyors



• corner this sheet