

CERTIFIED CORNER RECORDATION

CORNER NW S 28 T. 31 N., R. 33 W., P.M.M. LINCOLN COUNTY

178321 BOOK: CCR CC&R'S PAGE: 10656 Pages: 1
STATE OF MONTANA LINCOLN COUNTY
RECORDED: 08/09/2004 12:41 KOI: CC&R'S
CORAL M. CUMMINGS CLERK AND RECORDER
FEE: \$0.00 BY: *Leanne Berge*
TO: FILED

RECORD:

Per GLO of Daniel Mumbrue 1893

Set a post 4 ft. long 4 ins. square 24 ins. in the ground for Cor. to Sec.s 20, 21, 28 and 29 marked T 31 N S21 on NE, R 33 W S28 on SE, S 29 on SW and S 20 on NW faces with 2 notches on S. and 4 notches on E. edges.

From which

A Tamarack 16 ins. diam. bears N 56 1/2° E 36 lks dist. marked T 31 N R 33 W S 21 BT.

A Pine 8 ins. diam. bears S 34 1/2° E 57 lks. dist. marked T 31 N R 33 W S 28 BT.

A Pine 12 ins diam. bears S 61 1/2° W 89 lks. dist. marked T 31 N R 33 W S 29 BT.

A Pine 10 ins. diam. bears N 76 1/2° W 12 lks. dist. marked T 31 N R 33 W S 20 BT.

FOUND EVIDENCE:

2 1/2 Inch Dia. brass cap set by 2235-S in 1971 (leaning against small tree). Bearing trees in Sections 20, 21 and 29 visible. Scribing and blazes on all trees.

PERPETUATION:

Set a 3 1/4 inch Dia. aluminum cap on a 5/8 inch Dia. rebar 5 feet long 5 feet in the ground. (see diagram.)

From which

A 11 inch DBH Ponderosa Pine (original with visible scribing) bears N 37° E 81.80 feet dist.

A 6 1/2 DBH Lodge Pole Pine (original with visible scribing) bears N 29° W 86.50 feet dist.

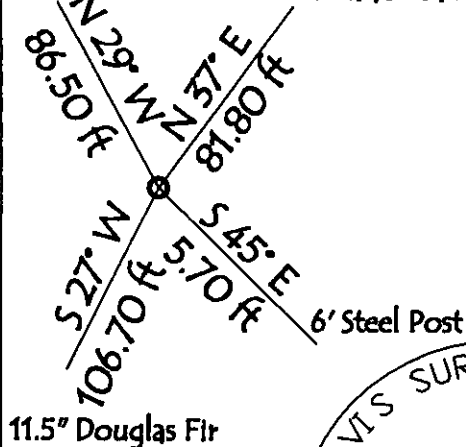
A 11 1/2 inch DBH Douglas Fir (original with visible blaze) bears S 27° W 106.70 feet dist.

Set a 6 foot long steel fence post (no trees available) for bearing objects which bears S 45° E 5.70 feet dist.

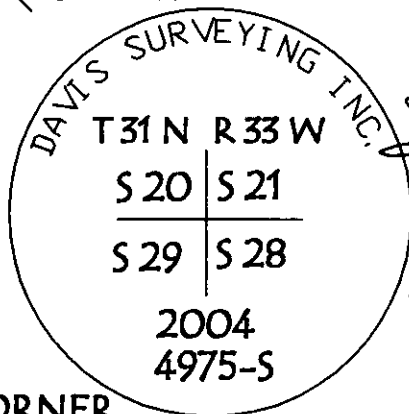
Painted 6 ins wide band on trees and attached bearing tree signs to all trees

MAGNETIC DECLINATION: 18° E

6.5" Lodge Pole Pine 11" Ponderosa Pine



11.5" Douglas Fir



CERTIFICATION

I, GEORGE CLARK

Certify the information shown herein is true and correct

George Clark
Signature of Ground Party Chief

I, KENNETH E. DAVIS

certify that this Corner Record correctly represents work performed by me or under my direction in compliance with the "Corner Recordation Act"

(M 2-2-101 et seq., M.C.A.)

Kenneth E. Davis
Signature of Surveyor or Secretary

Reg. No. 4975-S

Employer: Davis Surveying Inc

7/28/04

SKETCH OF CORNER

Office of Clerk and Recorder, County of _____

This "corner record" was filed for record on _____

was noted on the cross-index plat and is assigned page

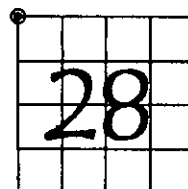
No. 10656

In book No. _____

County Official

Cross Index No. NW S 28 T. 31 N., R. 33 W., P.M.M.

SECTION



THIS CORNER