

CERTIFIED CORNER RECORDATION

CORNER N 1/4 S 28 T. 31 N., R. 33 W., P.M.M. LINCOLN COUNTY

178323 BOOK: CCR CC&R'S PAGE: 10653 Pages: 1
STATE OF MONTANA LINCOLN COUNTY
RECORDED: 08/09/2004 12:43 KOI: CC&R'S
CORAL M. CUMMINGS CLERK AND RECORDER
FEE: \$0.00 BY: *Jeanne Dennis*
TO: FILED *deputy*

RECORD:

Per GLO of Daniel Mumbrue 1893

Set a post 3 ft. long 3 ins. square 24 ins. in the ground for 1-4 sec. cor. marked 1-4S on the N face from which

A pine 14 ins. dia. bears N 30 1/2° W 20 lks. distant marked 1-4S BT.

A pine 10 ins. dia. bears S 17° W 53 lks. distant marked 1-4S BT

FOUND EVIDENCE:

1/2 inch dia. rebar. No bearing trees

Refer to Corner Recordation #62. (Set 1/2" + 24" steel rod with cap stamped: JN 534 ES. No B.T.S)

PERPETUATION:

Set a 3 1/4 inch. dia. aluminum cap on a 5/8 inch. dia. rebar 5 feet long 5 feet in the ground. (See diagram below.)

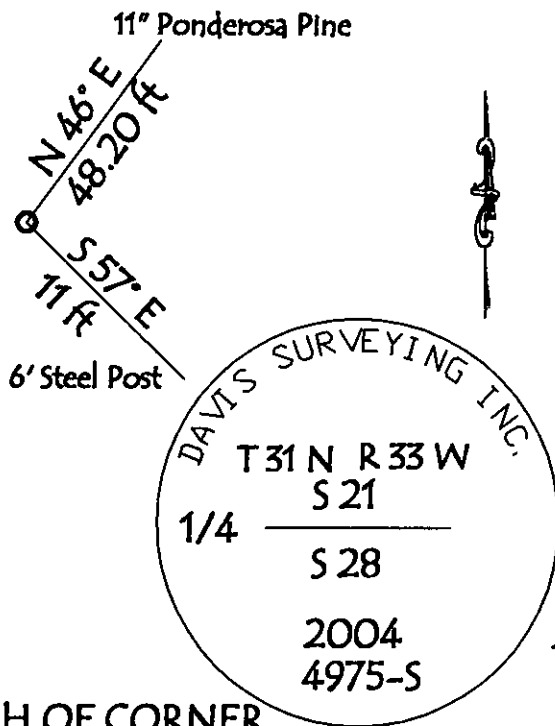
from which

A 11 inch DBH Ponderosa Pine scribed T 31 N R 33 W S 21 1/4 BT bears N 46 E 48.20 feet dist.

A 6 foot long steel fence post bears S 57 E 11.0 ft dist. (No trees available.)

Painted 6 inch wide band and attached bearing tree signs to tree and post.

MAGNETIC DECLINATION: 18° E



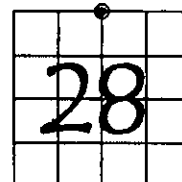
CERTIFICATION
 I, George Clark
 Certify the information shown herein is true and correct
 Signature of Ground Party Chief
 I, KENNETH E. DAVIS
 certify that this Corner Record correctly represents work performed by me or under my direction in compliance with the "Corner Recordation Act" (M.C.L.A. 7-101, et seq.)
 Signature of Surveyor & Seal
 DAVIS
 Reg. No. 4975-S
 Employee of DAVIS SURVEYING INC
 1/28/04

SKETCH OF CORNER

Office of Clerk and Recorder, County of _____
This "corner record" was filed for record on _____
was noted on the cross-index plat and is assigned page
No. 10653
In book No. _____

County Official

SECTION



THIS CORNER

Cross Index No. N 1/4 S 28 T. 31 N., R. 33 W., P.M.M.