

CERTIFIED CORNER RECORDATION

CORNER E 1/16 S 28 T. 31 N., R. 33 W., P.M.M

LINCOLN

COUNTY

178322 BOOK: CCR CC&R'S

PAGE: 10652 Pages: 1

STATE OF MONTANA LINCOLN COUNTY

RECORDED: 08/09/2004 12:42 KOI: CC&R'S

CORAL M. CUMMINGS CLERK AND RECORDER

FEE: \$0.00

BY: *Flannery*
Deputy

RECORD:

Unrecorded corner recordation of Jack H. Ninneman dated 4-16-84 4661-S.

Set a 5/8" + 24" rebar, capped with J.H.N. 4661-S stamped on cap

from which

A 6" Ponderosa Pine bears S 51° W 43.2 ft scribed E 1/16 S 28 BT.

A location poster and attention signs on a 22" Ponderosa Pine bears S 25° W 58.1 ft.

A 8" Douglas Fir bears S 60° E 46.5 ft scribed E 1/16 S 28 BT

posted bearing trees with bearing tree signs.

FOUND EVIDENCE:

Found 5/8 inch Dia. rebar bent and out of position

A 13 inch DBH Ponderosa Pine bears S 47° W 46.0 feet

A 13 1/2 inch DBH Douglas Fir bears S 57° E 48.10 feet

Both trees have visible blazes & bearing tree tags.

PERPETUATION:

Set a 3 1/4 inch aluminum cap stamped (see diagram below) on a 5/8 inch Dia. rebar 30 inches long 36 inches in the ground.

from which

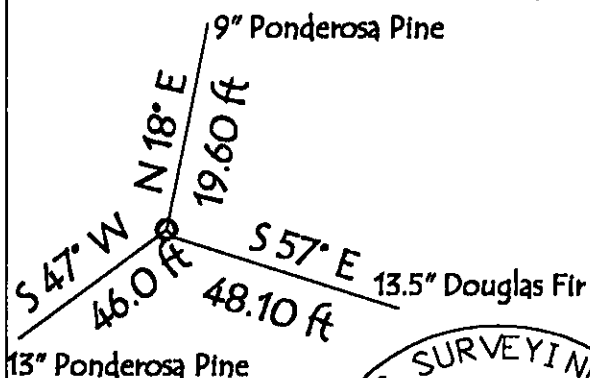
A 13 inch DBH Ponderosa Pine bears S 47° W 46 feet with face blaze and corner tags.

A 13 1/2 inch DBH Douglas Fir bears S 57° E 48.1 feet with face blaze and corner tags.

A 9 inch DBH Ponderosa Pine scribed E 1/16 S 21 BT bears N 18° E 19.60 feet

Painted 6 inch wide bands and attached bearing tree signs to all trees.

MAGNETIC DECLINATION: 18° E



CERTIFICATION

I, GEORGE CLARK

Certify the information shown herein is true and correct

Signature of Ground Party Chief

I, KENNETH E. DAVIS

certify that this Corner Record correctly represents work performed by me or under my direction in compliance with the

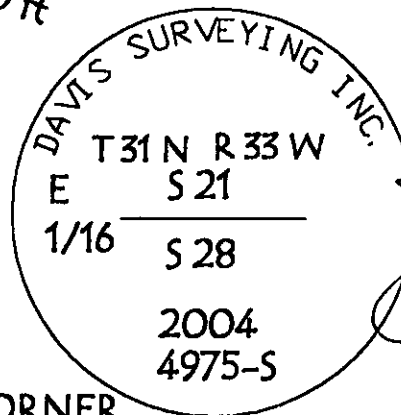
Corner Recordation Act (70-22-101, M.C.A.)

Signature of Surveyor & Seal

Emp. No. 4975-S

Surveying, INC

7/28/04



SKETCH OF CORNER

Office of Clerk and Recorder, County of _____

This "corner record" was filed for record on _____

was noted on the cross-index plat and is assigned page

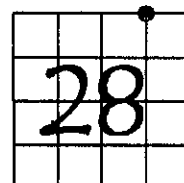
No. 10652

In book No. _____

County Official

Cross Index No. R12 E 1/16 S 28 T. 31 N., R. 33 W., P.M.M.

SECTION



THIS CORNER