

-CERTIFIED CORNER RECORDATION

Corner SE 1/16 **Sec.** 8 **T.** 31N **R.** 33W **P.M., MT** **Lincoln** **County**

XX-AMENDED-XX

I. 1994 Certified Corner Recordation, page no. 7309, by Alvah F. Hughes, 7322LS: Set by survey, a 3/4 in. diam. aluminum rod, 30 ins. long, 28 ins. in the ground, with a 3 1/4 in. diam. aluminum cap, mkd. as shown.



Established two bearing trees:

- A larch, 5 ins. diam., bears N72°W, 22.7 ft. dist., mkd. "SE 1/16 S8 BT".
- A pine, 5 ins. diam., bears N10°W, 8.0 ft. dist., mkd. "SE 1/16 S8 BT".

Set a 6 ft. steel galvanized guard post, West, 4.0 ft. dist., with Land Survey Monument and Bearing Tree signs attached.

II. Found a 3/4 in. diam. aluminum rod, with a 3 1/4 in. diam. aluminum cap mkd. as shown above and witnessed by the 1994 bearing trees.

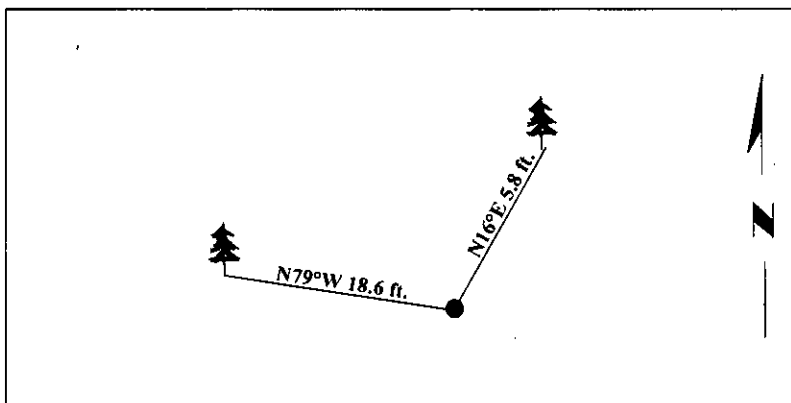
III. *Amended the 1994 Certified Corner Recordation, filed in the Lincoln County Courthouse, May 3, 1995, page no. 7309, due to errors found in the 1994 survey methods, I amended the corner as follows: I moved the found aluminum rod to the newly established position, as determined by survey. I reset the 30 ins. long, 3/4 in. diam. aluminum rod, 26 ins. in the ground, I replaced the old cap with another 3 1/4 in. diam. aluminum cap, as during the move, the cap was destroyed, mkd. new cap as shown.

I used existing bearing trees and established new bearings and distances:

- A pine, 6 ins. diam., bears N16°E, 5.8 ft. dist., mkd. "SE 1/16 S8 BT".
- A larch, 7 ins. diam., bears N79°W, 18.6 ft. dist., mkd. "SE 1/16 S8 BT".

Painted bearing trees and attached Land Survey Monument and Bearing Tree signs.

Magnetic Declination: 20° East



SKETCH OF CORNER

CERTIFICATION

I. **Mark Federman**
 certify the information shown herein is true and correct.
Mark Federman

I. **Alvah F. Hughes**
 certify that this Corner Record correctly represents work performed by me or under my direction in compliance with the Corner Recordation Act (90-22-104 et seq.; M.C.A.).
Alvah F. Hughes
 Signature of Surveyor & S&S

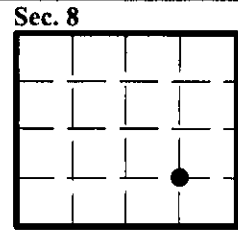
Date: 8/06/98

Reg. No.: 7322LS

Employer: U.S. FOREST SERVICE

Office of Clerk and Recorder, County of Lincoln. This "corner record" was filed for record on 11-18-98 and was noted on the cross-index plat and is assigned page No. 10259 in book No. _____.

Coral M. Cummings
 County Official



● - corner this sheet